



**LORDSHIP LANE, EAST DULWICH, SE22
OFFERS OVER £400,000 LEASEHOLD**

**A CHARMING AND SPACIOUS FLAT,
SITUATED IN A PRIME LOCATION IN SE22
CLOSE TO DULWICH VILLAGE.**

Dulwich | 020 8299 2722 | dulwich@winkworth.co.uk

Winkworth

winkworth.co.uk

See things differently



DESCRIPTION:

A charming and spacious flat, situated in a prime location in SE22 close to Dulwich Village. This charming first floor two-bedroom flat is situated within an impressive Victorian building in the centre of East Dulwich. The property offers an open plan kitchen reception with modern fixtures, appliances and fittings, a good-sized master double bedroom, a spacious second bedroom and a modern bathroom. The property is located right in the centre of East Dulwich on Lordship Lane close to the bars, restaurants, Picture House cinema and local amenities. Close proximity into Dulwich Park and transport links into Central London including East Dulwich with links to London Bridge and the Overground connections at Denmark Hill station. This is a wonderful first time buy or rental investment flat and should be viewed immediately.

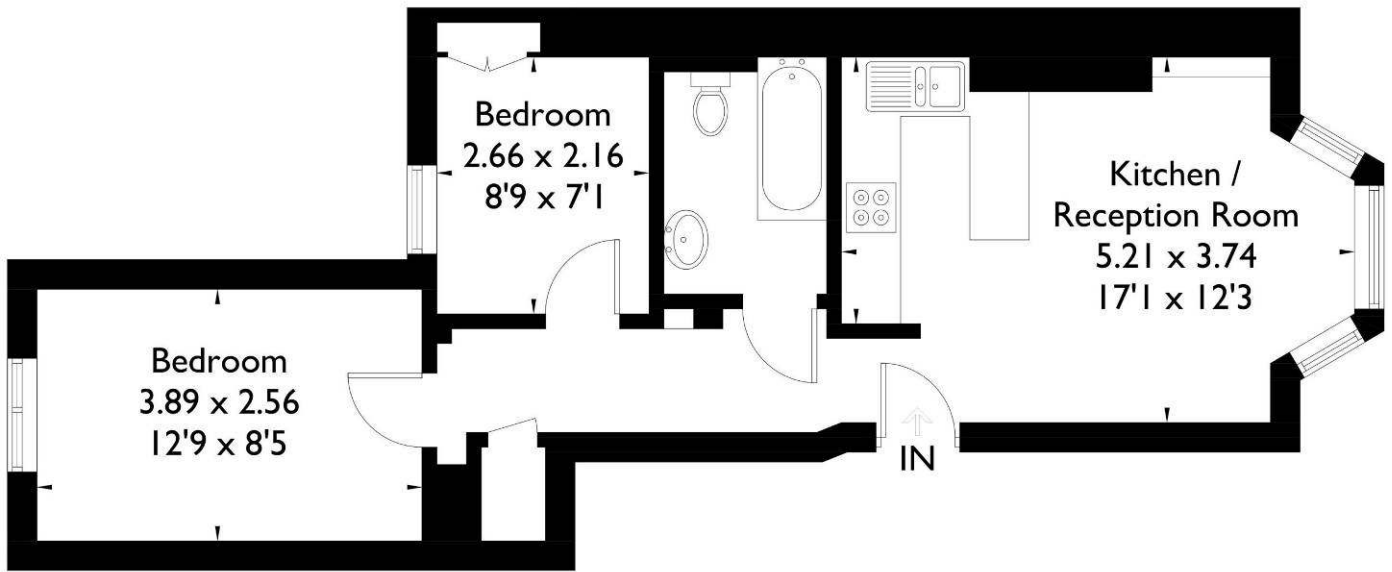
AT A GLANCE

- Two Bedrooms
- Victorian Flat
- Open Plan Kitchen-Reception
- Modern Kitchen & Bathroom
- Upper Floor
- Leasehold
- Close to Dulwich Park



Lordship Lane, East Dulwich, SE22

Approximate Gross Internal Area = 45.2 sq m / 487 sq ft

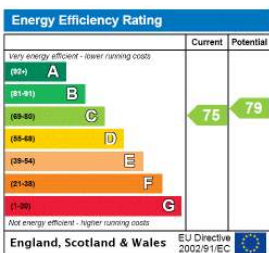


Upper Ground Floor

FLOORPLANZ © 2015 0845 6344080 Ref: 150555

This plan is for layout guidance only. Drawn in accordance with RICS guidelines. Not drawn to scale unless stated. Windows & door openings are approximate. Whilst every care is taken in the preparation of this plan, please check all dimensions, shapes & compass bearings before making any decisions reliant upon them.

This floorplan is for illustration purposes only and is not to scale. The position and size of doors, windows, appliances and other features are approximate.



Dulwich | 020 8299 2722 | dulwich@winkworth.co.uk



winkworth.co.uk

See things differently

Winkworth wishes to inform prospective buyers and tenants that these particulars are a guide and act as information only. All our details are given in good faith and believed to be correct at the time of printing but they don't form part of an offer or contract. No Winkworth employee has authority to make or give any representation or warranty in relation to this property. All fixtures and fittings, whether fitted or not are deemed removable by the vendor unless stated otherwise and room sizes are measured between internal wall surfaces, including furnishings.