



149 Andover Road, Newbury, RG14 6NB

A charming three bedroom semi-detached cottage with a SOUTH-EAST facing garden, DRIVEWAY parking and beautiful period features, situated within 0.7 miles to ST. BARTS.

As you enter the property, you're greeted with the extremely generous hall, this space is also perfect for an office. The living room features a beautiful log burner and wooden floors. The kitchen consists of duck egg cabinets with wood effect work tops. There is a breakfast bar and a barn door leading to the rear garden. Downstairs also benefits from a utility room and bathroom.

Upstairs are three double bedrooms. The master suite benefits from a separate dressing area, built in storage and ensuite. Bedrooms two and three are of equally great size, with bedroom three being dual aspect.

To the front of the property is a low maintenance front garden which is mainly laid to lawn. The driveway provides space for several vehicles and access at the top to the rear garden. The rear garden is south-east facing with a large storage space adjoined to the house. There is a patio space perfect for alfresco dining. The rest of the garden is mainly laid to lawn. There is a summer house with electricity and wooden floor, as well as a large workshop with electricity.



Winkworth

AT A GLANCE

1387ft² / 128.8m²

Living Room
Office Space
Kitchen Diner
Utility Room
Downstairs Bathroom
Three Double Bedrooms
Ensuite
South East Facing Garden
Driveway
No Onward Chain

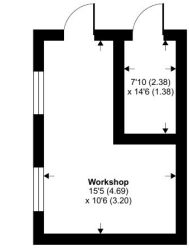
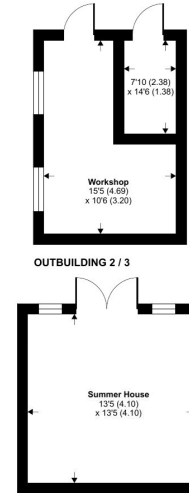
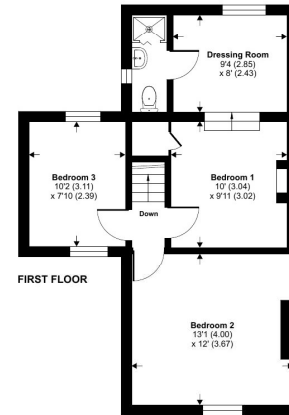
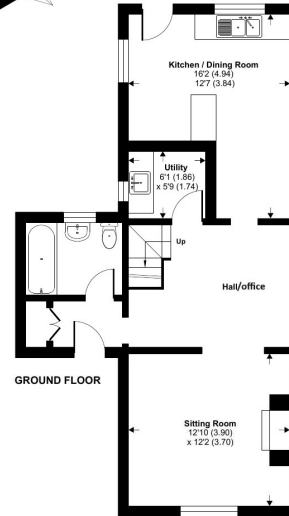
UTILITIES

The house is connected to all mains and operates on gas central heating. There is Ultrafast broadband available in the area and no known mobile coverage issues.

EPC - D
West Berkshire Council Tax Band – C

DIRECTIONS

What3Words:///drive.take.tones



Floor plan produced in accordance with RICS Property Measurement 2nd Edition, Incorporating International Property Measurement Standards (IPMS2 Residential). © richcom 2025. Produced for Winkworth. REF: 1332316

Winkworth



Newbury Office

43 Northbrook Street, Newbury, Berkshire RG14 1DT
01635 552552 | newbury@winkworth.co.uk

[winkworth.co.uk/newbury](https://www.winkworth.co.uk/newbury)

Winkworth

See things differently.