



Newton Road, W2

£795 per week (£3,445.00 PCM) *Furnished*



A TRULY STUNNING ONE-BEDROOM GARDEN APARTMENT, FINISHED TO THE HIGHEST OF STANDARDS AND WITH OFF STREET PARKING, ON THIS QUIET AND PRESTIGIOUS NOTTING HILL STREET.



Notting Hill Lettings

0207 727 3227 | nottinghill@winkworth.co.uk

Winkworth

for every step...



An absolutely stunning one-bedroom garden flat designed and furnished to the highest of standards. The accommodation extends to 755sq.ft and comprises; a large open plan reception room which has been cleverly designed to incorporate a spacious dining area linking the living space to the kitchen without being traditionally open plan. The kitchen opens out on to a lovely slated private garden via the Crittall doors, which let in plenty of natural light. A large shower/wet room boasts a spacious shower and the cosy bedroom incorporates plenty of storage as does the rest of the flat. Shorter let by separate negotiation.

Newton Road is a delightfully peaceful street, located just behind the many shops, bars and restaurants of Westbourne Grove and a short walk from the amenities and transport links of Queensway (The Whitelys Development due to open Autumn 2024), Notting Hill Gate and Paddington. Kensington Gardens and Hyde Park are a short walk, while the bustling Portobello Market is within easy reach.



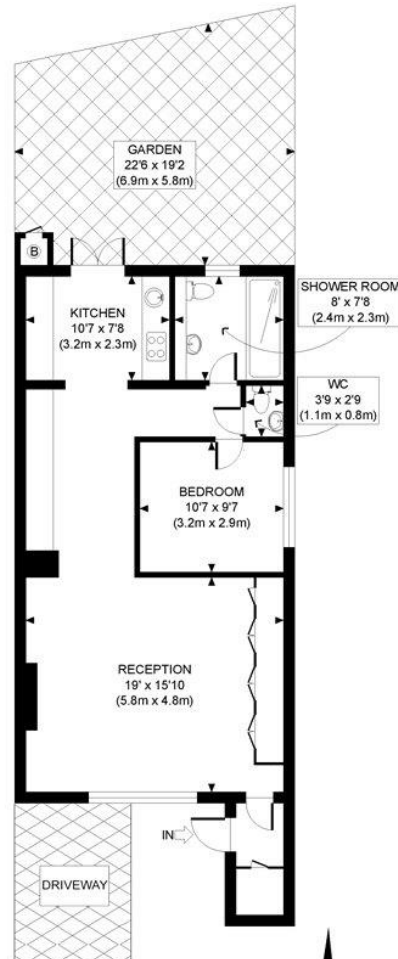


MATERIAL INFO

Deposit: £3,975

Holding Deposit: £795

Council Tax Band: C (Westminster)



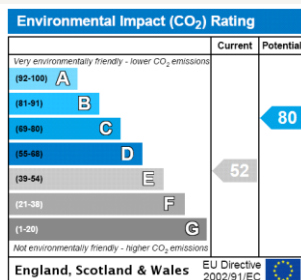
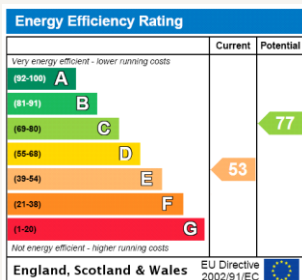
LOWER GROUND FLOOR
GROSS INTERNAL
FLOOR AREA 755 SQ FT

APPROX. GROSS INTERNAL FLOOR AREA: 755 SQ FT/ 70 SQM

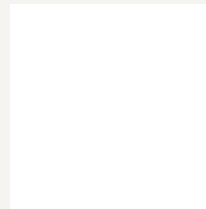
Winkworth

This plan is for illustrative purposes only and should be used as such by any prospective client. Whilst every attempt has been made to ensure the accuracy of the Floor Plan contained here, measurements of the doors, windows, rooms and any other items are approximate and no responsibility is taken for any errors, omissions, or misstatement. The services, systems and appliances shown have not been tested and no guarantee as to the operability or efficiency can be given.

PROPERTY PHOTO PLANS



For more information, scan the QR code or visit the link below



<https://www.winkworth.co.uk/rent/property/NHS250133>

Where no figures are shown, we have been unable to ascertain the information. All figures that are shown were correct at the time of printing.

Notting Hill Lettings

0207 727 3227 | nottinghill@winkworth.co.uk

Winkworth

for every step...

Winkworth wishes to inform prospective buyers and tenants that these particulars are a guide and act as information only. All our details are given in good faith and believed to be correct at the time of printing but they don't form part of an offer or contract. No Winkworth employee has authority to make or give any representation or warranty in relation to this property. All fixtures and fittings, whether fitted or not are deemed removable by the vendor unless stated otherwise and room sizes are measured between internal wall surfaces, including furnishings.