



JEYGROVE COURT, HATTON GARDEN, EC1N
£650,000 LEASEHOLD 167 YEARS

**THIS LARGER THAN AVERAGE APARTMENT SITS ON
 THE 4TH FLOOR OF AN IMPRESSIVE PURPOSE-BUILT
 APARTMENT BLOCK.**

Clerkenwell | 020 7405 1288 | clerkenwell@winkworth.co.uk

Winkworth

for every step...

winkworth.co.uk



DESCRIPTION:

The property comprises of a separate kitchen, a reception room leading on to the private balcony, two large double bedrooms overlooking the communal gardens, a fully tiled family bathroom and plenty of storage.

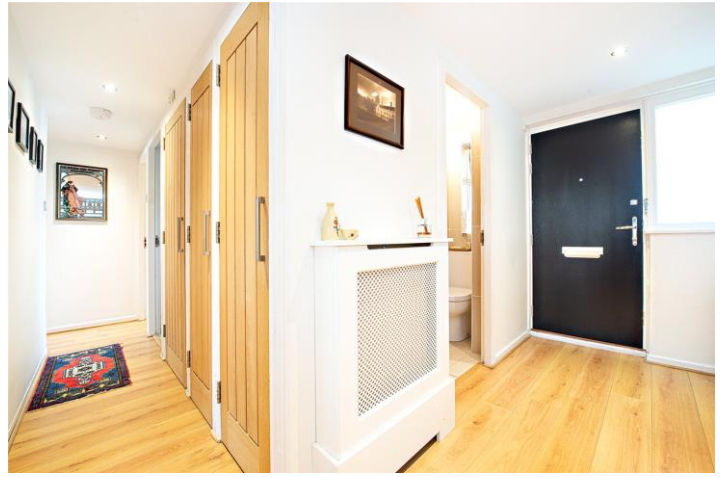
The property is walking distance to Fleet Street, the City, St Bartholomew's Hospital, Barrister's chambers at Gray's Inn Gardens, Law Courts, University of London campuses, London School of Economics and King's College. Farringdon and Chancery Lane tube stations are within 0.3 miles of the property.

Service Charge- £3,000 P/A | Ground Rent- £10 P/A



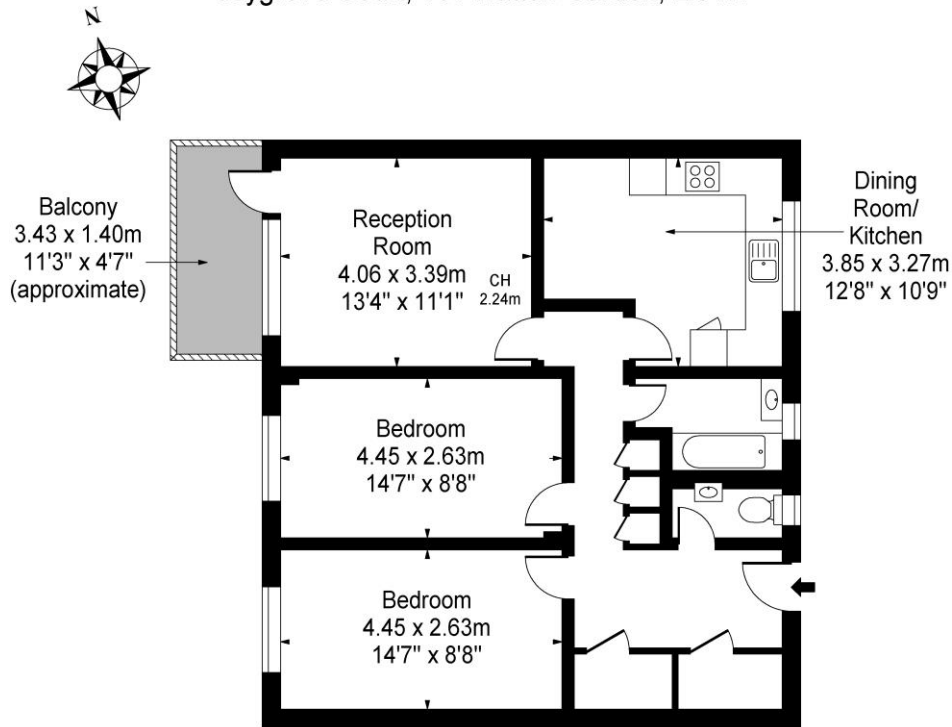
Winkworth

for every step...



Winkworth
for every step...

Jeygrove Court, 101 Hatton Garden, EC1N



Fourth Floor

Approx Gross Internal Area 794 Sq Ft - 73.80 Sq M

This floor plan should be used as a general outline for guidance only and constitute in whole or in part an offer or contract.
Any intending purchaser or lessee should satisfy themselves by inspection, searches, enquiries and full survey as to the correctness of each statement.
Any areas, measurements or distances quoted are approximate and should not be used to value a property or be the basis of any sale or let.

This floorplan is for illustration purposes only and is not to scale. The position and size of doors, windows, appliances and other features are approximate.

Clerkenwell | 020 7405 1288 | clerkenwell@winkworth.co.uk

Winkworth

for every step...

winkworth.co.uk

Winkworth wishes to inform prospective buyers and tenants that these particulars are a guide and act as information only. All our details are given in good faith and believed to be correct at the time of printing but they don't form part of an offer or contract. No Winkworth employee has authority to make or give any representation or warranty in relation to this property. All fixtures and fittings, whether fitted or not are deemed removable by the vendor unless stated otherwise and room sizes are measured between internal wall surfaces, including furnishings.