



FIELD ROAD, BERKSHIRE, RG1 6AP  
**£375,000 FREEHOLD**

## A FABULOUS VICTORIAN TERRACED HOME LOCATED CLOSE TO READING TOWN CENTRE

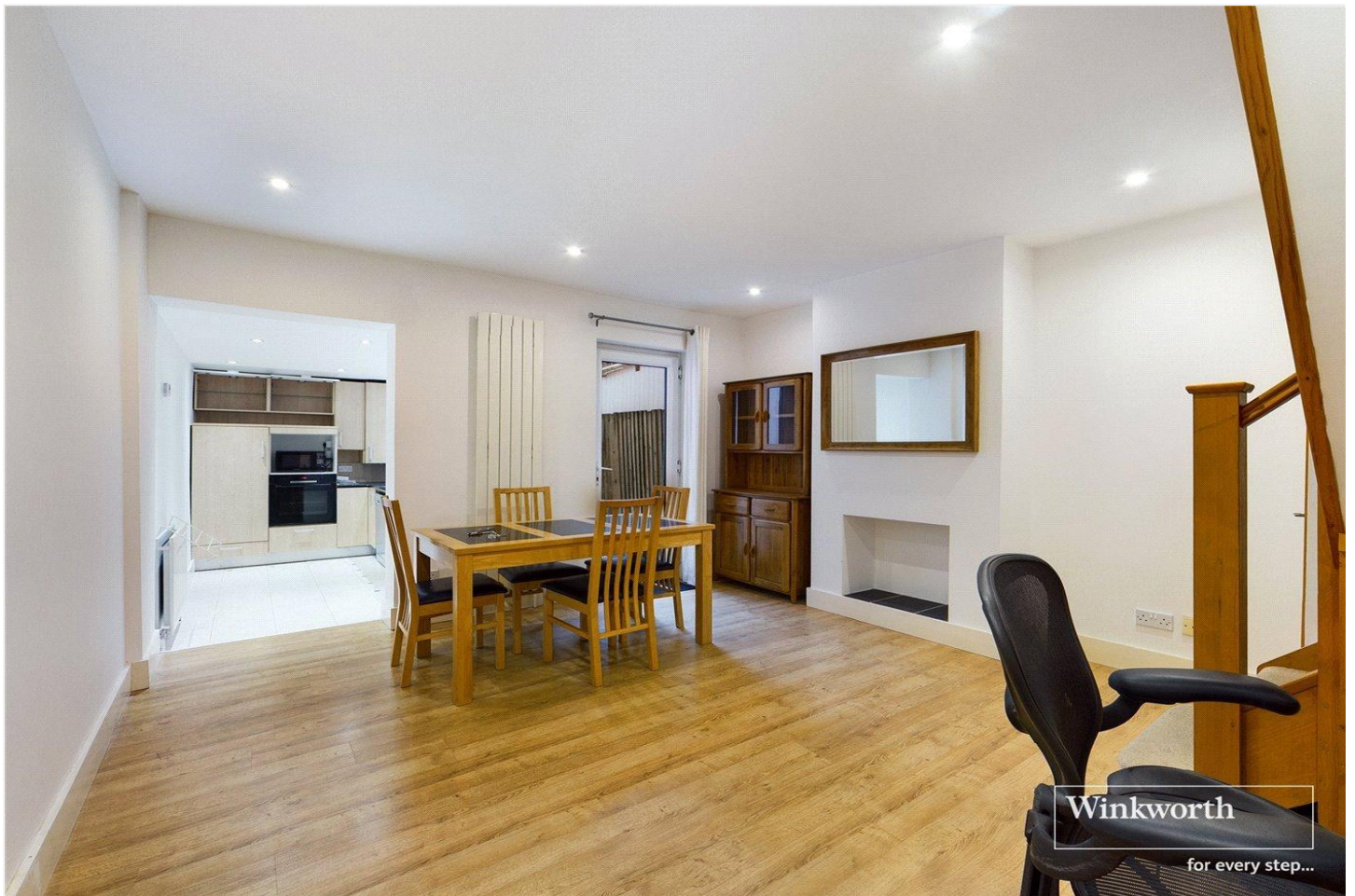
Reading | 0118 4022 300 | [reading@winkworth.co.uk](mailto:reading@winkworth.co.uk)

**Winkworth**

for every step...

[winkworth.co.uk](http://winkworth.co.uk)





## DESCRIPTION:

A fabulous Victorian Terraced home located close to Reading town centre with its direct links to London Paddington by train this characterful property would suit a young family or professional couple seeking with easy access to London (Reading is 23 minutes by train to London Paddington) The property is set over three floors with the accommodation comprises of two reception rooms, separate kitchen, The first floor has two double bedrooms and a spacious modern four piece bathroom with bath and separate shower. The loft has been converted to create a bonus loft room with ensuite. Benefits also include double glazing, gas central heating and on road parking, for sale with no chain complications.

## AT A GLANCE

- Modern terraced house
- Set over 3 floors
- Two reception rooms
- Two bathrooms
- Gas central heating and double glazed
- On Road Permit parking
- No onward chain











1000.37 ft<sup>2</sup>  
92.94 m<sup>2</sup>

118.87 ft<sup>2</sup>  
11.04 m<sup>2</sup>

(1) Excluding balconies and terraces

☐ Reduced headroom  
(below 1.5m/4.92ft)

While every attempt has been made to ensure accuracy, all measurements are approximate, not to scale. This floor plan is for illustrative purposes only.

GIRAFFE 360

Winkworth wishes to inform prospective buyers and tenants that these particulars are a guide and act as information only. All our details are given in good faith and believed to be correct at the time of printing but they don't form part of an offer or contract. No Winkworth employee has authority to make or give any representation or warranty in relation to this property. All fixtures and fittings, whether fitted or not are deemed removable by the vendor unless stated otherwise and room sizes are measured between internal wall surfaces, including furnishings.