



EAST DULWICH ROAD, EAST DULWICH, LONDON SE22
£550,000 LEASEHOLD

CHARMING TWO-BEDROOM APARTMENT IN MODERN ALTIMA COURT, EAST DULWICH

Dulwich | 020 8299 2722 | dulwich@winkworth.co.uk

Tenure Freehold | Council Tax Band D – London Borough of Southwark | EPC
Rating TBC

Winkworth

winkworth.co.uk

See things differently



DESCRIPTION:

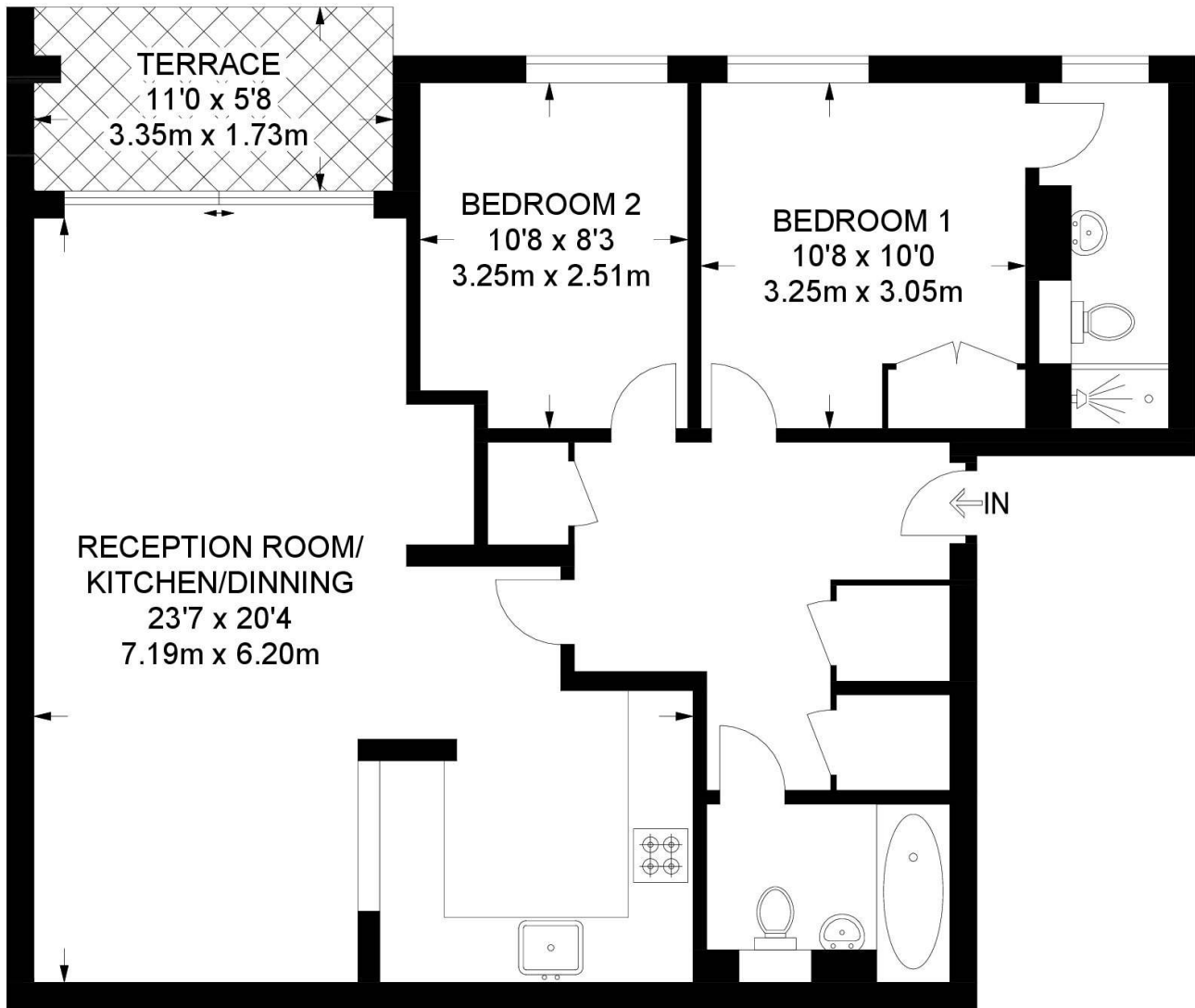
Nestled in the contemporary Altima Court building on East Dulwich Road, this lovely two double bedroom apartment offers stylish and comfortable living with a spacious hallway on entry and an open plan feel that maintains distinct separation between living areas. The main bedroom benefits from a built-in wardrobe, complemented by ample storage space throughout the apartment. Featuring two bathrooms, a private balcony, underground car park, lift access, and access to beautifully maintained communal gardens, this home perfectly blends practicality with modern lifestyle needs. Ideally situated close to East Dulwich Station, with excellent transport links to London Bridge and Peckham Rye Station, the apartment offers seamless connectivity for commuters. Residents also benefit from proximity to Peckham Rye Park, a popular green space perfect for running, dog walking, or relaxing outdoors. Enjoy easy access to the vibrant neighbourhoods of East Dulwich and Peckham Rye, known for their lively buzz, trendy bars, cozy coffee shops, and a wide range of local amenities. This property is perfect for anyone seeking a great location that combines contemporary living with an energetic and welcoming community atmosphere.

AT A GLANCE

- Two Double Bedroom
- Apartment
- Open-Plan
- Private Balcony
- Underground Car Park
- Communal Gardens
- Excellent Transport
- Close to Peckham Rye Park







FIRST FLOOR

**APPROXIMATE GROSS INTERNAL AREA
806 SQ FT / 74.9 SQ M**

This floorplan is for illustration purposes only and is not to scale. The position and size of doors, windows, appliances and other features are approximate.

EPC in Progress

Dulwich | 020 8299 2722 | dulwich@winkworth.co.uk

Winkworth

winkworth.co.uk

See things differently

Winkworth wishes to inform prospective buyers and tenants that these particulars are a guide and act as information only. All our details are given in good faith and believed to be correct at the time of printing but they don't form part of an offer or contract. No Winkworth employee has authority to make or give any representation or warranty in relation to this property. All fixtures and fittings, whether fitted or not are deemed removable by the vendor unless stated otherwise and room sizes are measured between internal wall surfaces, including furnishings.