



OAKINGTON MANOR DRIVE, WEMBLEY, HA9
£850,000 FREEHOLD

FOUR-BEDROOM DETACHED RESIDENCE MOMENTS FROM THE HEART OF WEMBLEY

Kingsbury | 020 8204 0000 | kingsbury@winkworth.co.uk



for every step...

winkworth.co.uk



Winkworth
for every step...

DESCRIPTION: Introducing a timeless gem to the market after more than half a century, this full of potential detached residence is poised elegantly along a coveted residential avenue. Situated moments from the vibrant pulse of ever-expanding Wembley. Whilst in need of a modern touch, this home presents a harmonious blend of classic charm and contemporary convenience. Upon entering, you are greeted by a thoughtfully designed ground floor featuring a welcoming entrance hall, generously sized kitchen, and ample double reception room complemented by a convenient downstairs W/C enhancing the practicality of everyday living. The upper-level hosts four well sized bedrooms, each providing a sanctuary of comfort, and a family bathroom. Beyond lies a beautifully proportioned garden and patio area at the rear, offering an inviting space for relaxation and entertainment. Additionally, this property benefits from scope to extend (STPP) being within the catchment area of esteemed educational institutions, including the prestigious Lycée International de Londres, catering perfectly to families. A personal viewing is imperative to fully appreciate the unparalleled offerings of this remarkable home.



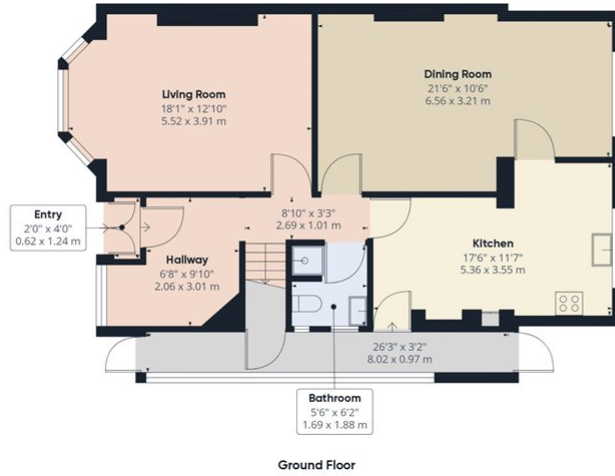
Winkworth

for every step...

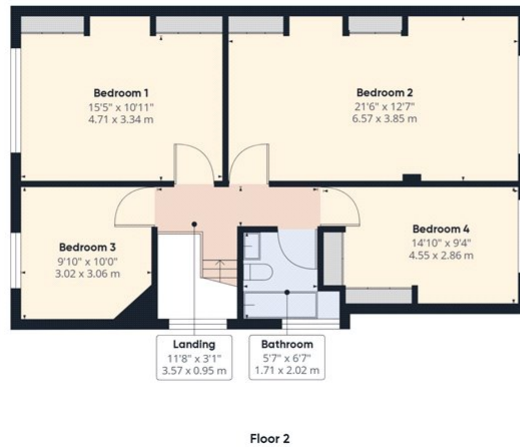


Winkworth

for every step...



Approximate total area⁽¹⁾
 1686.86 ft²
 156.71 m²

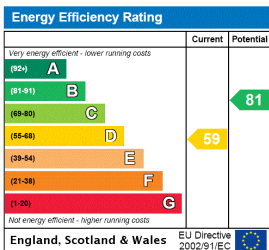


(1) Excluding balconies and terraces

While every attempt has been made to ensure accuracy, all measurements are approximate, not to scale. This floor plan is for illustrative purposes only.

GIRAFFE360

This floorplan is for illustration purposes only and is not to scale. The position and size of doors, windows, appliances and other features are approximate.



Tenure: Freehold

Council Tax Band: F

Where no figures are shown, we have been unable to ascertain the information. All figures that are shown were correct at the time of printing.

Kingsbury | 020 8204 0000 | kingsbury@winkworth.co.uk



for every step...

winkworth.co.uk

Winkworth wishes to inform prospective buyers and tenants that these particulars are a guide and act as information only. All our details are given in good faith and believed to be correct at the time of printing but they don't form part of an offer or contract. No Winkworth employee has authority to make or give any representation or warranty in relation to this property. All fixtures and fittings, whether fitted or not are deemed removable by the vendor unless stated otherwise and room sizes are measured between internal wall surfaces, including furnishings.