



## Churchill Gardens, SW1V

£2,500 PER MONTH

**FURNISHED**

### AT A GLANCE

- Large Duplex Apartment
- Recently Redecorated
- Heating and Hot Water Included
- Two Double Bedrooms
- Modern Fitted Kitchen
- Private Balcony

**Winkworth**

for every step...



Score	Energy rating	Current	Potential
92+	A		
81-91	B		
69-80	C		79 C
55-68	D	66 D	
39-54	E		
21-38	F		
1-20	G		

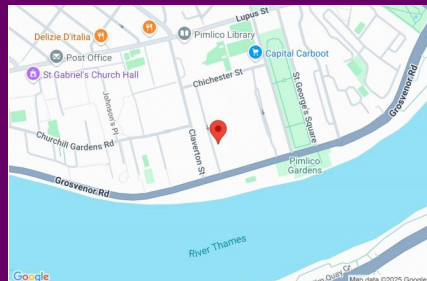
## CHURCHILL GARDENS, SW1V

£2,500 PER MONTH

FURNISHED

\*\*\* THE RENT INCLUDES HEATING AND  
HOT WATER \*\*\*

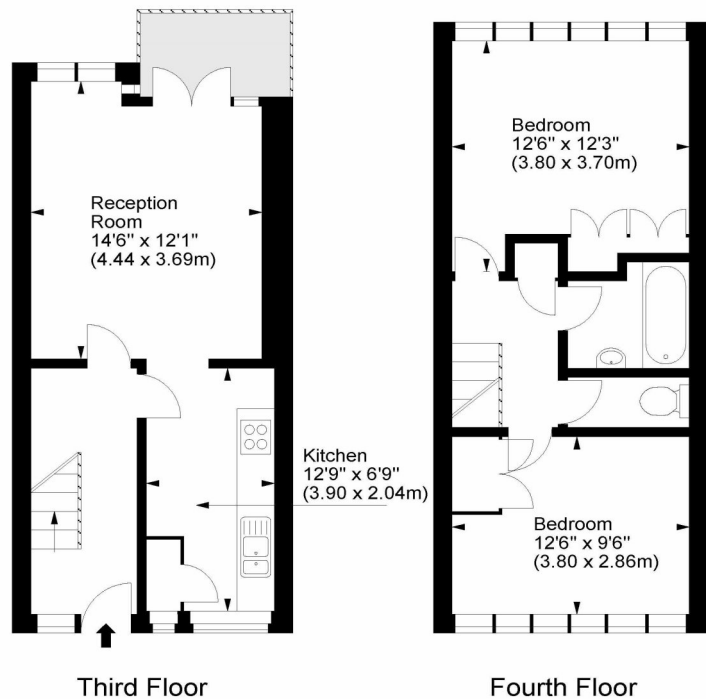
Having undergone an extensive refurbishment, this beautifully finished apartment comprises of a newly fitted kitchen leading on to a spacious reception room with south facing balcony. Upstairs are: two large double bedrooms, family bathroom and a separate W.C. The whole apartment benefits from excellent natural light and there is good, practical storage throughout.



winkworth wishes to inform prospective buyers and tenants that these particulars are a guide and act as information only. All our details are given in good faith and believed to be correct at the time of printing but they don't form part of an offer or contract. No winkworth employee has authority to make or give any representation or warranty in relation to this property. All fixtures and fittings, whether fitted or not are deemed removable by the vendor unless stated otherwise and room sizes are measured between internal wall surfaces - including fire-chimneys.

### Lowther House, SW1

Approx. Gross Internal Area  
715 Sq Ft - 66.42 Sq M



For illustration purposes only. Not to scale.  
All measurements are taken and shown at floor level.  
www.r3photography.co.uk © Photography / Floor Plans / Lease Plans / EPCs



Pimlico & Westminster | 020 7828 1786 |  
pimlico@winkworth.co.uk

winkworth.co.uk/pimlico

# Winkworth

for every step...