



DRAYCOTT AVENUE, LONDON, SW3  
 £695 PW / £3,011.67 PCM

FURNISHED, UNFURNISHED

A TWO BEDROOM APARTMENT WITHIN EASY  
 WALKING DISTANCE OF BOTH THE SLOANE  
 SQUARE AND KING'S ROAD

Knightsbridge & Chelsea | 0207 589 6616 | knightsbridge@winkworth.co.uk

**Winkworth**

*winkworth.co.uk*

See things differently





## DESCRIPTION:

Recently refurbished two double bedroom flat on the first and second floors with a large living room with dining area. The property benefits from a private roof terrace, double glazing, good storage and air conditioning in the master en-suite bedroom.



- Two Bedrooms
- Two Bathrooms
- Roof Terrace
- 912 Appox. Sq Ft
- EPC - E

**Winkworth**

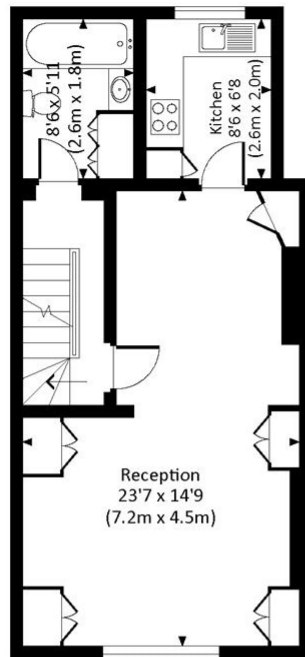


Winkworth

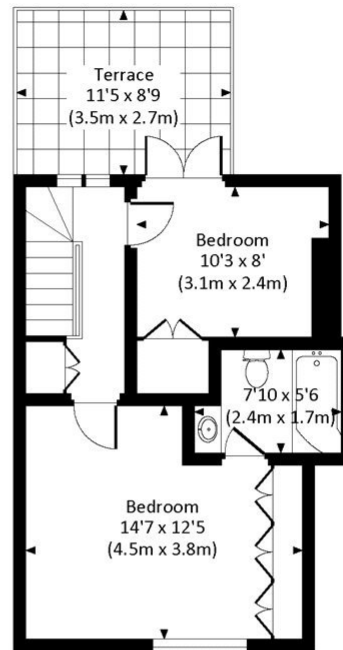


# DRAYCOTT AVENUE, SW3

Approx. gross internal area  
912 Sq Ft. / 84.7 Sq M.



FIRST FLOOR



SECOND FLOOR

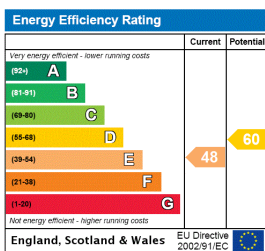


GROUND FLOOR



All measurements have been made in accordance with RICS Code of Measuring Practice which are approximate only and only for illustrative purposes. For the avoidance of doubt, Dowling Jones Design shall not be liable for any reliance on these measurements. © 2018 www.dowlingjones.com 020 7610 9933

This floorplan is for illustration purposes only and is not to scale. The position and size of doors, windows, appliances and other features are approximate.



Knightsbridge & Chelsea | 0207 589 6616 | knightsbridge@winkworth.co.uk

**Winkworth**

[winkworth.co.uk](http://winkworth.co.uk)

See things differently

Winkworth wishes to inform prospective buyers and tenants that these particulars are a guide and act as information only. All our details are given in good faith and believed to be correct at the time of printing but they don't form part of an offer or contract. No Winkworth employee has authority to make or give any representation or warranty in relation to this property. All fixtures and fittings, whether fitted or not are deemed removable by the vendor unless stated otherwise and room sizes are measured between internal wall surfaces, including furnishings.