



Church View, High Street, Helpringham, Lincolnshire, NG34 0RA

£375,000 Freehold

This attractive new-build detached bungalow is thoughtfully designed and finished to a high standard, offering modern living within a charming village setting. Constructed with a pleasing blend of brick and stone elevations under a tiled roof, the property enjoys a smart, contemporary feel while fitting seamlessly into its surroundings. A welcoming entrance leads into a well-proportioned layout that maximises space and natural light throughout.

Brand New Detached Bungalow | Approx. 1000 Sq Ft of Accommodation | Three Well-Proportioned Bedrooms | Master Bedroom With En-Suite Shower Room | Open-Plan Kitchen | Separate Utility Room | Modern Family Bathroom | Private Rear Garden With Patio Area | Attractive Brick And Stone Construction | Popular Village Location | No Onward Chain

DESCRIPTION

The accommodation extends to approximately 1000 sq ft and comprises a generous lounge with doors opening to the rear garden, a stylish open-plan kitchen, and a useful utility room. There are three bedrooms, including a principal bedroom with en-suite shower room, alongside a modern family bathroom. The layout is ideal for a range of buyers, whether downsizers, families, or those seeking single-storey living without compromise.

Externally, the property benefits from a private rear garden, patio seating area and gated side access, providing a pleasant outdoor space for relaxation or entertaining. Located within easy reach of local amenities and set in a desirable village location, this beautifully finished new home combines practicality, comfort and contemporary design, and is offered with the advantage of no onward chain.

ACCOMMODATION

Entrance Hall

Open Plan Kitchen/Dining Living Room - 18'10" x 15'6" (5.74m x 4.72m)

Utility Room - 8'6" x 5'8" (2.6m x 1.73m)

Bedroom One - 13'11" x 9'9" (4.24m x 2.97m)

En-Suite Shower Room

Bedroom Two - 10'10" x 9'10" (3.3m x 3m)

Bedroom Three - 10'10" x 9'10" (3.3m x 3m)

Family Bathroom

LOCAL AUTHORITY

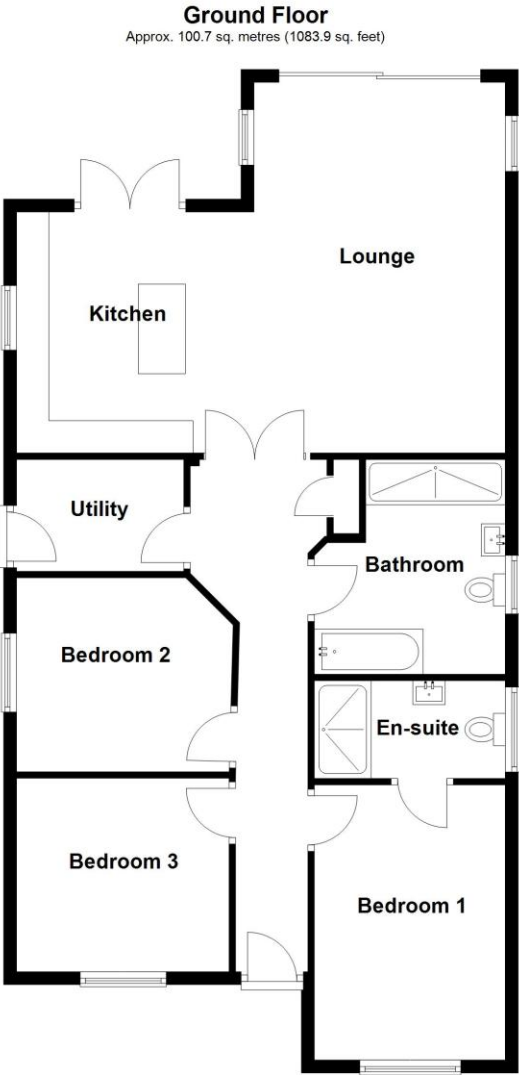
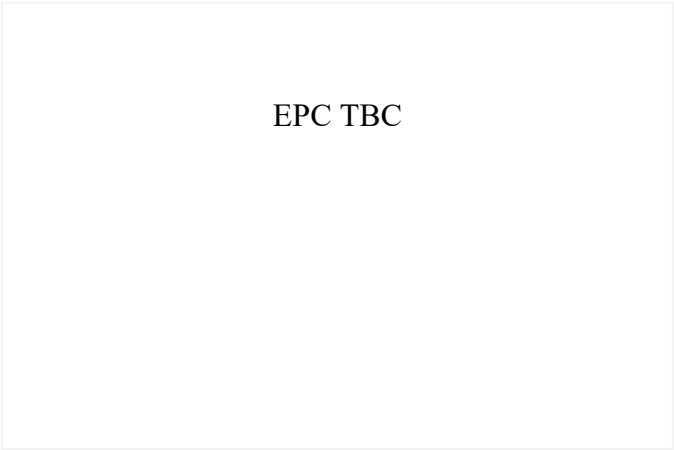
North Kesteven District Council

TENURE

Freehold

COUNCIL TAX BAND

TBC



Total area: approx. 100.7 sq. metres (1083.9 sq. feet)