

BOYDELL COURT, ST JOHN'S WOOD, LONDON, NW8 £1,300 PER WEEK FURNISHED, UNFURNISHED

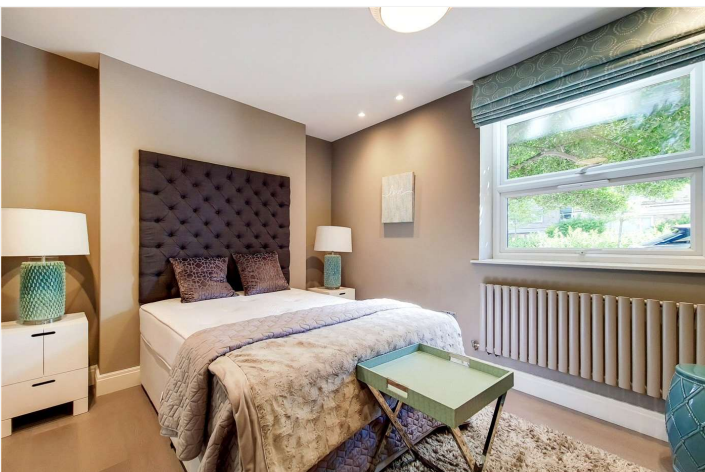
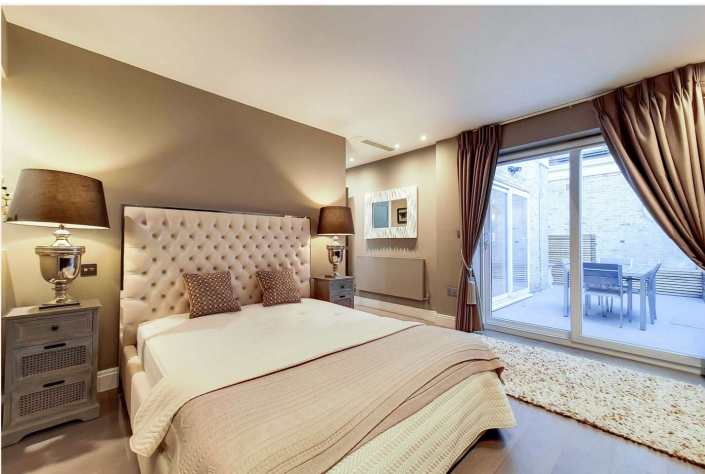
Set on the ground floor of this popular portered purpose built block, you will find this bright and spacious two bedroom home. Ideally located moments from St John's Wood High Street and tube station (Jubilee line) and close to all the amenities of Finchley Road and Swiss Cottage, you are never far away from a wonderful cafe or the many shops and restaurants.

Two Bedrooms | Two En-Suite Bathrooms | Guest WC | Reception Room | Kitchen | Air Conditioning | Courtyard | 24 Hour Portage

Winkworth

for every step...

winkworth.co.uk/st-johns-wood





— Ground Floor

GROSS INTERNAL AREA (GIA)
The footprint of the property.
110.30 sqm / 1187.26 sqft

NET INTERNAL AREA (NIA)
Exclude walls and external features.
Include washrooms, restricted head height.
101.40 sqm / 1091.46 sqft

EXTERNAL STRUCTURAL FEATURES
Balconies, terraces, verandas etc.
0.00 sqm / 0.00 sqft

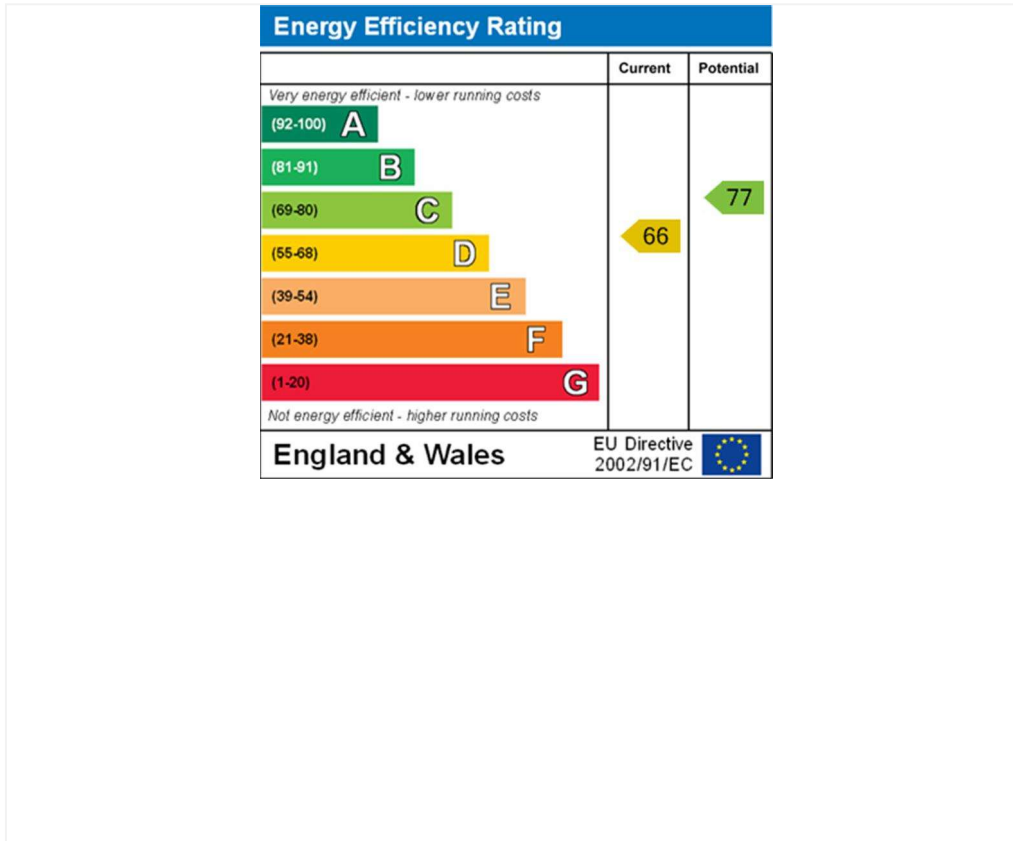
RESTRICTED HEAD HEIGHT
Limited use area under 1.8m.
0.00 sqm / 0.00 sqft



Spec Verified floor plans are produced in accordance with Royal Institution of Chartered Surveyors' Property Measurement Standards. Plots and gardens are illustrative only and excluded from all area calculations. Due to rounding, numbers may not add up precisely. All measurements shown for the individual room lengths and widths are the maximum points of measurements captured in the scan.

IPMS 3B RESIDENTIAL 110.83 sqm / 1192.86 sqft
IPMS 3C RESIDENTIAL 103.09 sqm / 1109.65 sqft

spec id 609256a64048510dde8a7e6d



Tenancy Deposit: £7,800.00

Holding Deposit: 1 weeks rent where the rent is up to £50,000 per annum, 2 weeks rent where the rent is over £50,000 per annum

Council Tax Band: F

Where no figures are shown, we have been unable to ascertain the information. All figures that are shown were correct at the time of printing.

Where no figures are shown, we have been unable to ascertain the information. All figures that are shown were correct at the time of printing.

These particulars are not an offer or contract, nor part of one. You should not rely on statements by Winkworth in the particulars or by word of mouth or in writing "information" as being factually accurate about the property, its condition or its value. Winkworth does not have any authority to make any representations about the property, and accordingly any information given is entirely without responsibility on the part of the agents, seller(s) or lessor(s). These particulars are prepared on the basis of the information supplied by our client and are a rough guide for information only. The photographs show only certain parts of the property. We are not able to check all of the information and therefore are unable to guarantee accuracy. All interested parties are therefore advised to undertake all necessary inspections and checks that they deem appropriate. Where displayed, the square footage is taken from the floor plans, which are created by an independent supplier. These measurements are approximate and included for illustrative purposes only. The measurements may vary. Winkworth does not make any representation as to the accuracy of these measurements and you should seek to verify them for yourself. Winkworth accept no liability for any loss you may suffer if you rely on these measurements. All fixtures and fittings, whether fitted or not are deemed removable by the vendor unless stated. Any reference to alterations to, or use of, any part of the property does not mean that any necessary planning, building regulations or other consent has been obtained. Amenities and appliances have not been tested

St John's Wood | 103-104 St. Johns Wood Terrace, London, NW8 6PL | 020 7586 7001 |

Winkworth

for every step...

winkworth.co.uk/st-johns-wood

Winkworth wishes to inform prospective buyers and tenants that these particulars are a guide and act as information only. All our details are given in good faith and believed to be correct at the time of printing but they don't form part of an offer or contract. No Winkworth employee has authority to make or give any representation or warranty in relation to this property. All fixtures and fittings, whether fitted or not are deemed removable by the vendor unless stated otherwise and room sizes are measured between internal wall surfaces, including furnishings.