



Kings Reach, Reading, Berkshire, RG1 3FF

£1,350 per month *Furnished*



A modern one bedroom apartment located on the first floor of the Kings Reach development in Reading town centre, a short walk from Reading train station. The property comprises a living room with open plan kitchen benefitting from integrated appliances, one double bedroom with a built in wardrobe and a modern three piece bathroom. Available 18th October 2025. Furnished.

KEY FEATURES

- Modern one bedroom apartment
- Town centre location
- First floor with lift access
- No parking
- Council Tax Band B
- Available 18th October
- Furnished

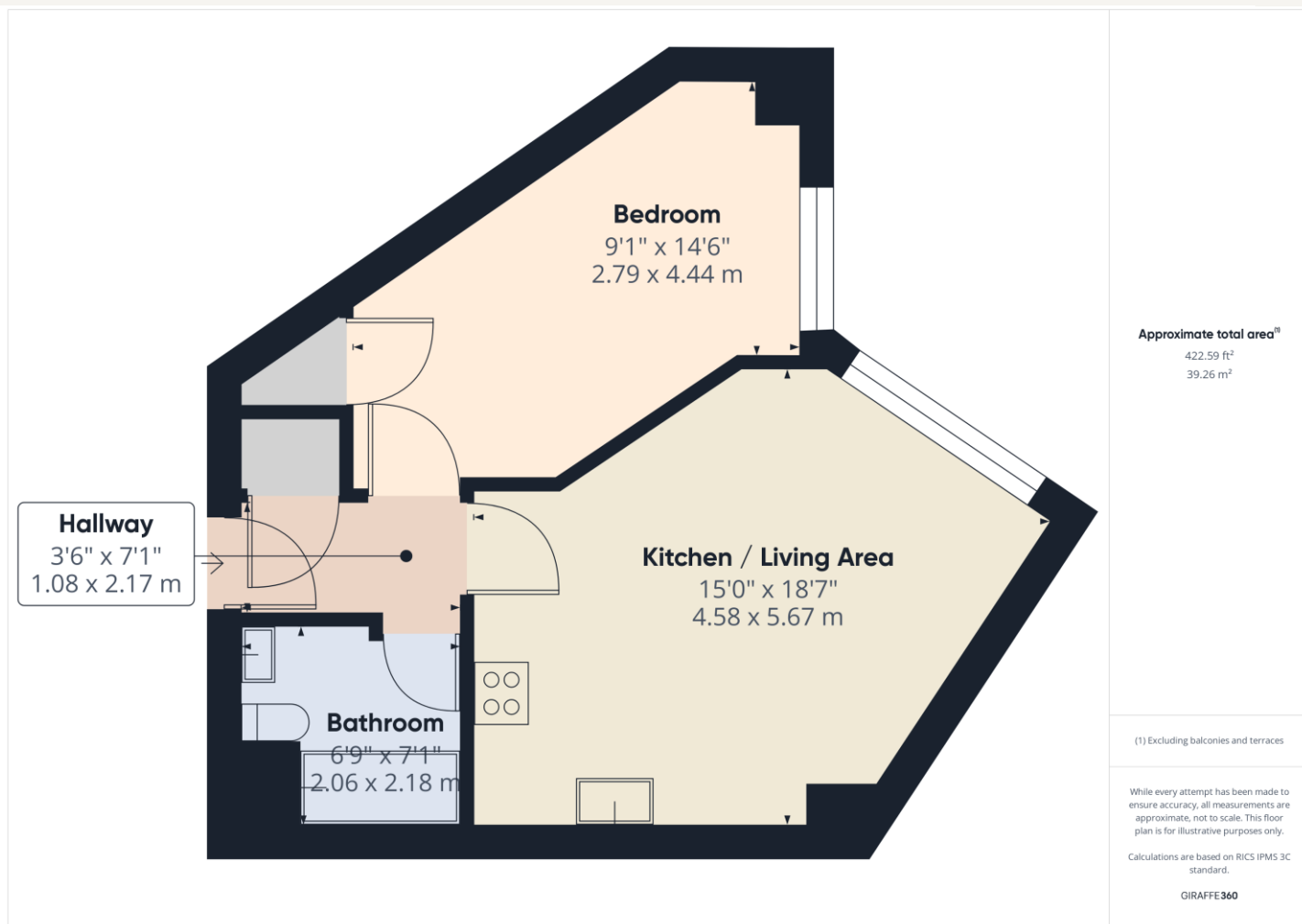


Reading

0118 4022 300 | reading@winkworth.co.uk

Winkworth

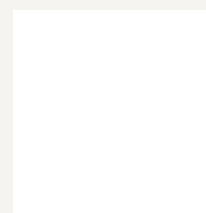
for every step...



MATERIAL INFO

For more information, scan the QR code or visit the link below

Deposit: £1,557.69
Holding Deposit: £311.53
Council Tax Band: B
EPC rating: C



<https://www.winkworth.co.uk/rent/property/REA170142>

Where no figures are shown, we have been unable to ascertain the information. All figures that are shown were correct at the time of printing.

Reading

0118 4022 300 | reading@winkworth.co.uk

Winkworth

for every step...

Winkworth wishes to inform prospective buyers and tenants that these particulars are a guide and act as information only. All our details are given in good faith and believed to be correct at the time of printing but they don't form part of an offer or contract. No Winkworth employee has authority to make or give any representation or warranty in relation to this property. All fixtures and fittings, whether fitted or not are deemed removable by the vendor unless stated otherwise and room sizes are measured between internal wall surfaces, including furnishings.