



VESPAN ROAD, LONDON, W12

£1,225,000 FREEHOLD

A STUNNING AND FULLY EXTENDED PERIOD TERRACE HOUSE WITH MASSES OF LIVING AND ENTERTAINING SPACE. THE PROPERTY IS COMPRISED OF A SPACIOUS DOUBLE RECEPTION ROOM, LEADING TO A FULLY EXTENDED AND FULLY FITTED KITCHEN AND DINING AREA THROUGH WHICH THE SOUTH FACING LOW MAINTENANCE AND IMMACULATELY KEPT GARDEN IS ACCESSED

Shepherds Bush | 020 8735 3266 | shepherdsbush@winkworth.co.uk

Winkworth

for every step...

A member of  OnTheMarket.com

[winkworth.co.uk/shepherds-bush](https://www.winkworth.co.uk/shepherds-bush)



DESCRIPTION:

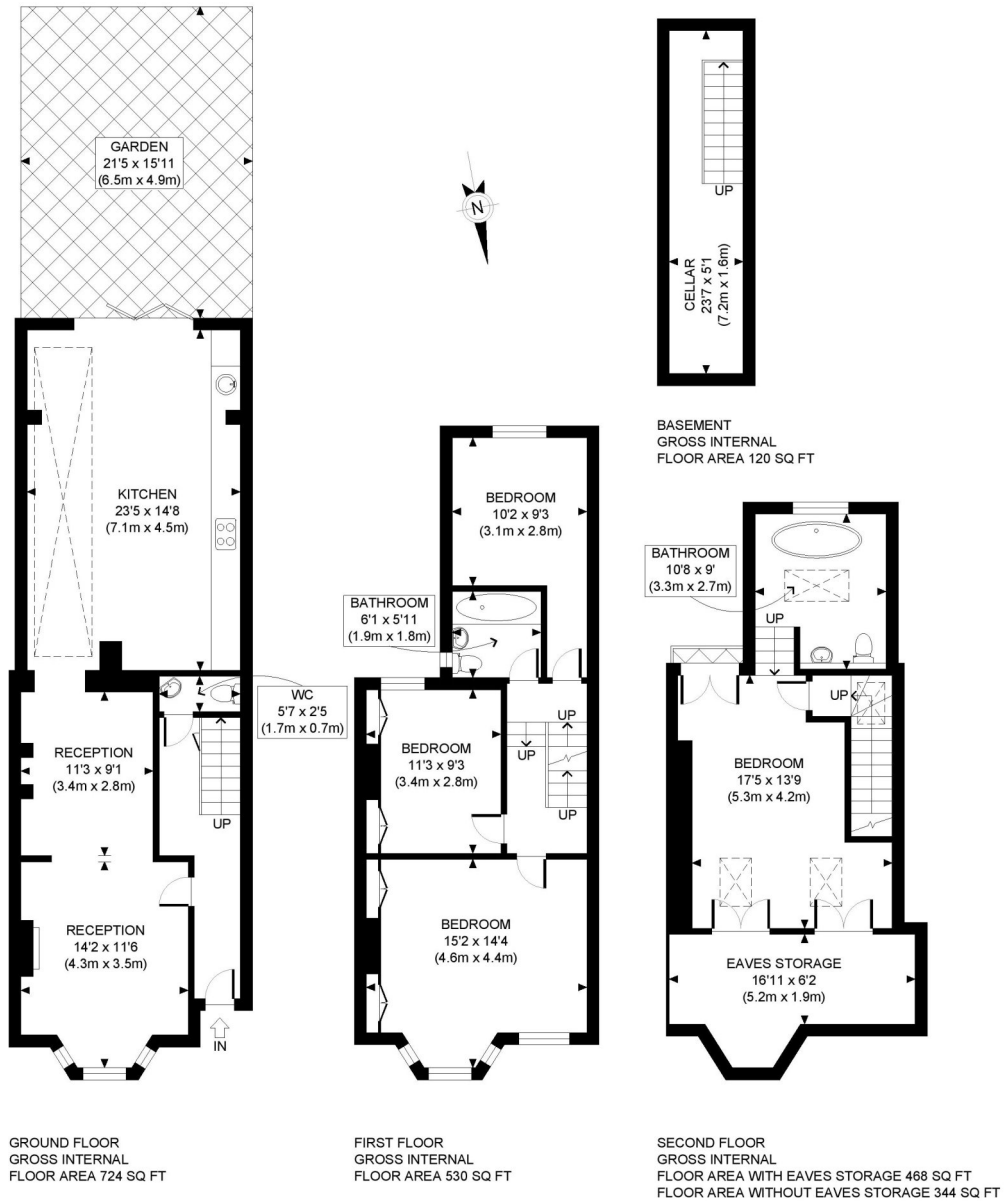
A stunning and fully extended period terrace house with masses of living and entertaining space. The property is comprised of a spacious double reception room, leading to a fully extended and fully fitted kitchen and dining area through which the south facing low maintenance and immaculately kept garden is accessed. On the first floor there are three good sized double bedrooms and a modern family bathroom and on the top floor the house is crowned by a beautiful loft conversion where an opulent master suite and bathroom encompasses the entire split level. The property also benefits from a ground floor guest WC, cellar with utilities and full air conditioning installed throughout the home. Offered to the market chain free and in turn key condition.

LOCATION:

Vespan Road is a popular family location which is in close proximity to well thought of primary schools, the incredibly hip 'Askew village' area with its cornucopia of independent shops and coffee shops and the frankly gorgeous Ravenscourt Park. Ravenscourt Park District Line underground is nearby as are many excellent bus services.



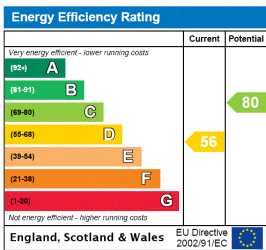




APPROX. GROSS INTERNAL FLOOR AREA WITH EAVES STORAGE: 1842 SQ FT/ 171 SQM
 APPROX. GROSS INTERNAL FLOOR AREA WITHOUT EAVES STORAGE: 1718 SQ FT/ 160 SQM

PROPERTY PHOT PLANS.co.uk
 ONE STOP SHOP FOR PROPERTY MARKETING

Whilst every attempt has been made to ensure the accuracy of the floor plan contained here, measurements of the doors, windows, rooms and any other items are approximate and no responsibility is taken for any errors, omissions, or miss-statement. This plan is for illustrative purposes only and should be used as such by any prospective client. The services, systems and appliances shown have not been tested and no guarantee as to the operability or efficiency can be given.



Shepherds Bush | 020 8735 3266 | shepherdsbush@winkworth.co.uk



for every step...

winkworth.co.uk/shepherds-bush