



## QUEENSWOOD ROAD, SE23

### £525,000 LEASEHOLD

#### DESCRIPTION:

Guide Price £525,000 - £550,000

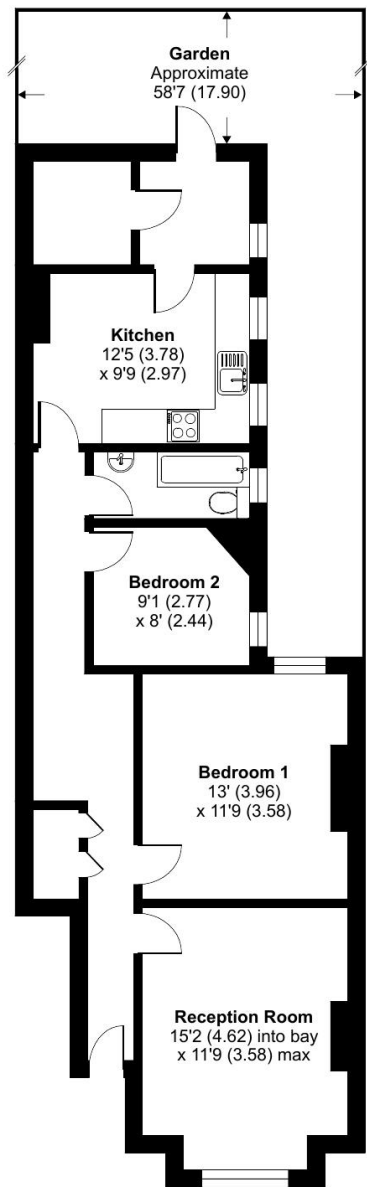
Presenting this beautifully renovated Two bedroom Edwardian ground floor maisonette, perfectly combining period charm with modern sophistication. Set in the heart of a highly sought after neighbourhood, this exquisite home offers the perfect blend of character, style and comfort.

Forest Hill | | [foresthill@winkworth.co.uk](mailto:foresthill@winkworth.co.uk)

Queenswood Road, London, SE23

Approximate Area = 812 sq ft / 75.4 sq m

For identification only - Not to scale



GROUND FLOOR



Floor plan produced in accordance with RICS Property Measurement Standards incorporating International Property Measurement Standards (IPMS2 Residential). © n/checom 2025. Produced for Winkworth Forest Hill and New Cross. REF: 1333944

This floorplan is for illustration purposes only and is not to scale. The position and size of doors, windows, appliances and other features are approximate.

Tenure: Leasehold

Score	Energy rating	Current	Potential
92+	A		
81-91	B		
69-80	C		
55-68	D		
39-54	E		
21-38	F		
1-20	G		

71 C

79 C