



THE GROVE, LONDON, W5
£550,000 LEASEHOLD

Ealing & Acton | 0208 896 0123 | ealing@winkworth.co.uk



for every step...

winkworth.co.uk



DESCRIPTION:

On offer is a superb two bedroom flat in the heart of Ealing Broadway. Located on the first floor, the flat provides dynamic open plan living with two well-proportioned bedrooms accompanied by two bathrooms. Off the living space is the benefit of a balcony, whilst the flat is also finished to the highest of standards. This modern four storey block is in the perfect location for all that Ealing Broadway has to offer. Not only are the many amenities that it has to offer on your doorstep, but also it is ideal for connections in and out of London, particularly being only a short walk to the soon to be Crossrail station of Ealing Broadway (0.4m). This flat is the ideal opportunity for any discerning commuter.



Winkworth

for every step...

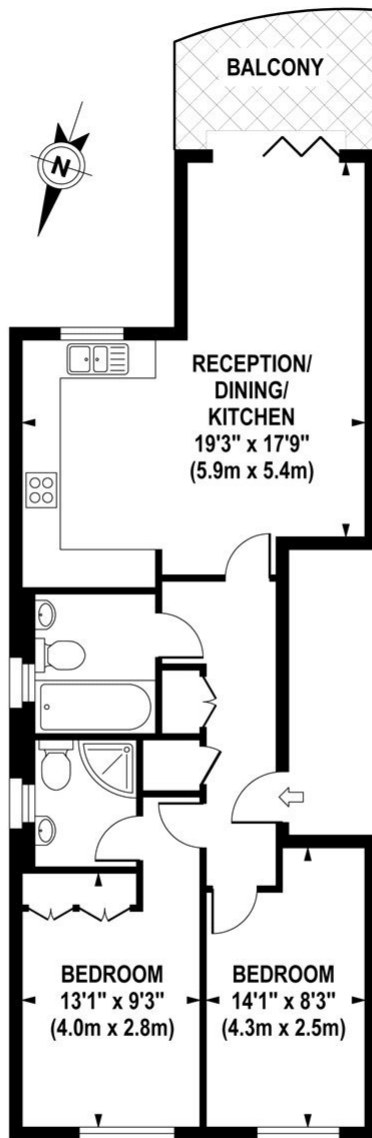


Winkworth

for every step...

THE GROVE

Approximate Gross Internal Area 721 sq ft / 67.0 sq m



FIRST FLOOR
GROSS INTERNAL
FLOOR AREA 721 SQ FT

Although every attempt has been made to ensure accuracy, all measurements are approximate. The floor plan's for illustrative purposes only and not to scale. Measured in accordance to RICS standards.

DE-PHOTOGRAPHY.NET

Energy Efficiency Rating		Current	Potential
Very energy efficient - lower running costs			
(92-)	A		
(81-91)	B	85	85
(69-80)	C		
(55-68)	D		
(39-54)	E		
(21-38)	F		
(1-20)	G		
Not energy efficient - higher running costs			
England, Scotland & Wales		EU Directive 2002/91/EC	



Ealing & Acton | 0208 896 0123 | ealing@winkworth.co.uk

for every step...

winkworth.co.uk

Winkworth wishes to inform prospective buyers and tenants that these particulars are a guide and act as information only. All our details are given in good faith and believed to be correct at the time of printing but they don't form part of an offer or contract. No Winkworth employee has authority to make or give any representation or warranty in relation to this property. All fixtures and fittings, whether fitted or not are deemed removable by the vendor unless stated otherwise and room sizes are measured between internal wall surfaces, including furnishings.