



BUCKRIDGE BUILDING, LONDON, EC1N £460,000

DESCRIPTION:

A very attractive one bedroom second floor flat in a superb Grade II listed purpose built residential block. This quiet apartment has been very well looked after by the current owner and comprises of a separate eat-in kitchen, a large fully fitted bathroom, a good size double bedroom and a separate reception with smart engineered oak wood flooring. There is also the opportunity to apply for off-street parking whilst there is also access to sports facilities and events space reserved for residents.

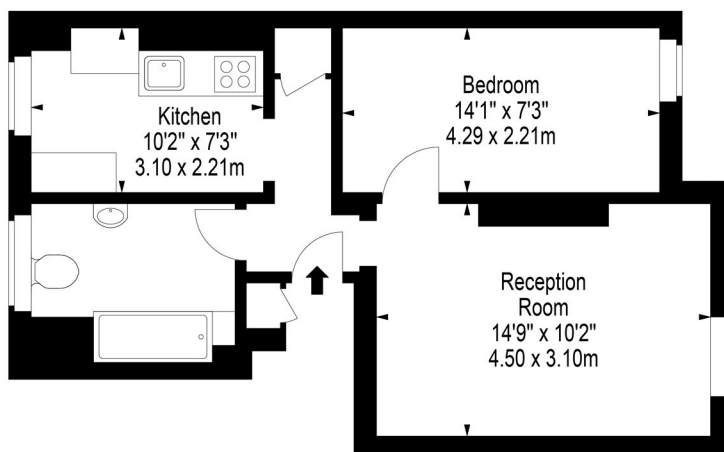
Clerkenwell & City | 020 7405 1288 | clerkenwell@winkworth.co.uk

Winkworth

for every step...

winkworth.co.uk

Buckridge building



Second Floor

Approx Gross Internal Area 441 Sq Ft - 40.97 Sq M

(Including Store)

Floor Plan Supplied For Identification Purposes Only And May Not Be Accurate
Floor Plan by www.elegantmediasolution.com

This floorplan is for illustration purposes only and is not to scale. The position and size of doors, windows, appliances and other features are approximate.

Energy Efficiency Rating		Current	Potential
Very energy efficient - lower running costs			
(92-100)	A		
(81-91)	B		
(69-80)	C	76	82
(55-68)	D		
(39-54)	E		
(21-38)	F		
(1-20)	G		
Not energy efficient - higher running costs			
England, Scotland & Wales		EU Directive 2002/91/EC	

Clerkenwell & City | 020 7405 1288 | clerkenwell@winkworth.co.uk

Winkworth

for every step...

winkworth.co.uk

Winkworth wishes to inform prospective buyers and tenants that these particulars are a guide and act as information only. All our details are given in good faith and believed to be correct at the time of printing but they don't form part of an offer or contract. No Winkworth employee has authority to make or give any representation or warranty in relation to this property. All fixtures and fittings, whether fitted or not are deemed removable by the vendor unless stated otherwise and room sizes are measured between internal wall surfaces, including furnishings.