

FETTER LANE, EC4A
£525,000 LEASEHOLD

Winkworth



FETTER LANE, EC4A

Refurbished to a good standard, this quiet, fifth floor one bedroom flat overlooking the gardens of the Maughan Library, is offered with a long lease and no onward chain.

The apartment has a large double bedroom with built in wardrobes, a modern separate Kitchen, reception and a smart tiled bathroom. Clifford's Inn on Fetter Lane is an extremely popular, entirely residential building with a 24 hour concierge and three lifts.

Clifford's Inn is located just off Fleet Street and is extremely well placed for the City and the West End, with multiple transport links close by.

Leasehold: Approx. 144 years remaining

Service Charge: Approx. £4,342 per annum

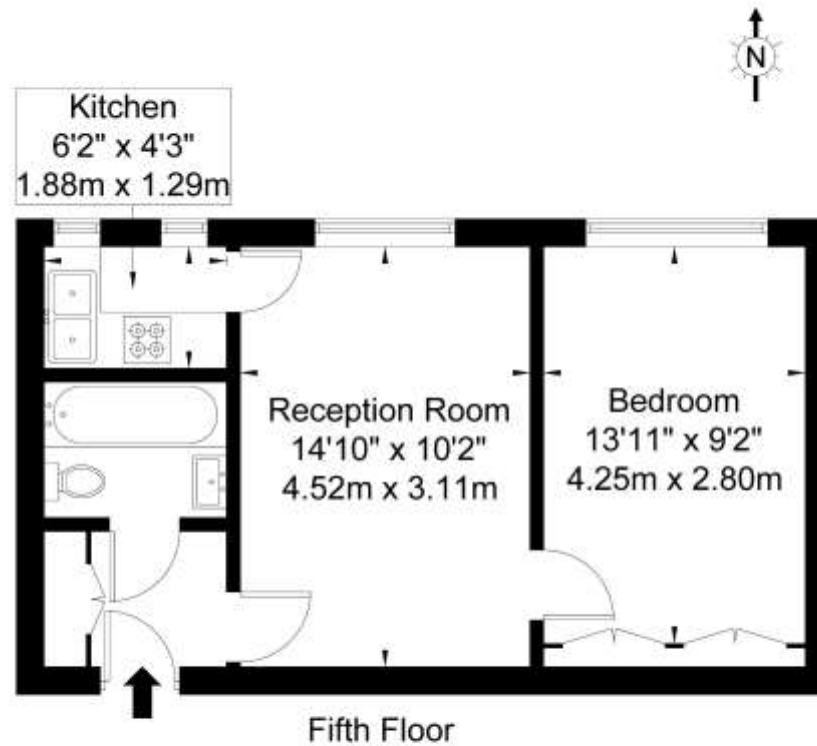
Council Tax: Band E





Clifford's Inn Fetter Lane, EC4A 1BX

Approx Gross Internal Area = 36.6 sq m / 393 sq ft



Ref

Copyright
**BLEU
PLAN**

The Floor plan is not to scale and measurements and areas shown are approximate and therefore should be used for illustrative purposes only. The plan has been prepared in accordance with the RICS code of Measuring Practice and whilst we have confidence in the information produced it must not be relied on. If there is any aspect of particular importance, you should carry out or commission your own inspection of the property.
Copyright © BLEUPLAN

Score	Energy rating	Current	Potential
92+	A		
81-91	B	82 B	84 B
69-80	C		
55-68	D		
35-54	E		
21-34	F		
1-20	G		

Clerkenwell & City | 020 7405 1288 | clerkenwell@winkworth.co.uk

winkworth.co.uk

Winkworth wishes to inform prospective buyers and tenants that these particulars are a guide and act as information only. All our details are given in good faith and believed to be correct at the time of printing but they don't form part of an offer or contract. No Winkworth employee has authority to make or give any representation or warranty in relation to this property. All fixtures and fittings, whether fitted or not are deemed removable by the vendor unless stated otherwise and room sizes are measured between internal wall surfaces, including furnishings.

Winkworth