

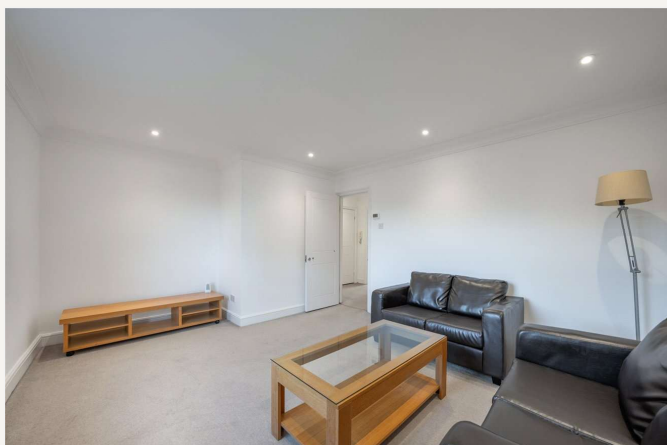


Randolph Avenue, London, W9

£600,000 *Share of Freehold*



A bright top floor (with a lift) well-proportioned one bedroom apartment, forming part of grand stucco-fronted period conversion, located in the heart of this sought-after area, situated on a quiet residential street. The apartment offers a spacious reception room, a large fully fitted kitchen, a principal bedroom and a bathroom suite. Randolph Avenue is situated in a conservation area of prime residential property within walking distance of the boutique shops, cafes on Clifton Road, the famous Regents Canal, the Underground (Approximately 0.3 Miles) at Warwick Avenue (Bakerloo Line) and Paddington Recreation Ground (Approximately 0.4 Miles) with outstanding children's play area, tennis courts, running tracks.



Winkworth Maida Vale

020 7289 1692 | maidavale@winkworth.co.uk

Winkworth

for every step...



KEY FEATURES

- Bedroom
- Bathroom
- Reception Room
- Separate Kitchen
- Passenger Lift
- Share of Freehold



MATERIAL INFO

Tenure: Share of Freehold
Lease Expiry Date: 29/09/3012
Service Charge: £2,081.96 per annum
Ground Rent: £0 Annually (subject to increase)
Council Tax Band: E
EPC rating: C





Score	Energy rating	Current	Potential
92+	A		
81-91	B		
69-80	C	70 C	70 C
55-68	D		
39-54	E		
21-38	F		
1-20	G		

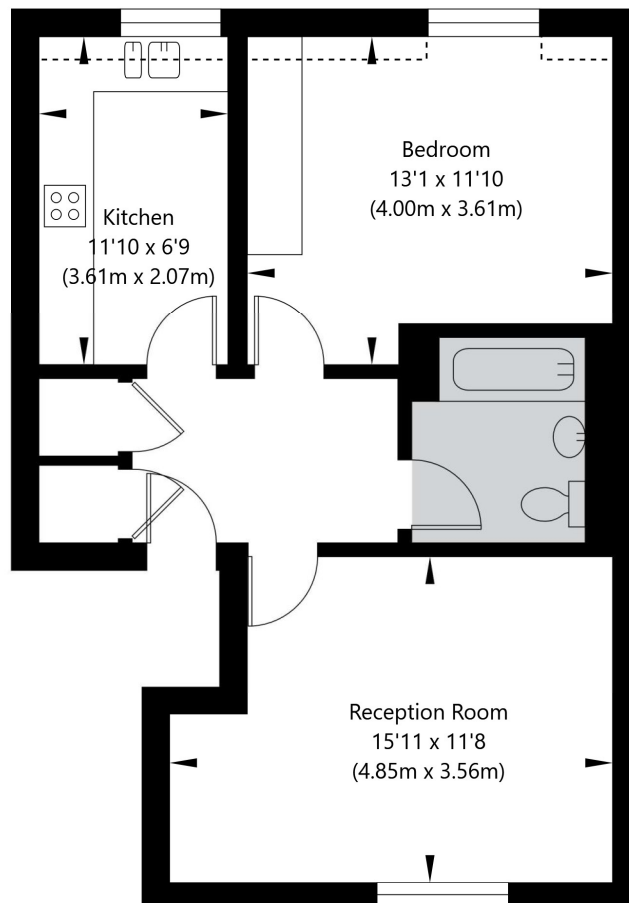
For more information, scan the QR code or visit the link below



<https://www.winkworth.co.uk/sale/property/MDV260016>

Randolph Avenue, London W9 1BG

Fourth Floor
GROSS INTERNAL FLOOR AREA
APPROX. 51.31 SQ M / 552 SQ FT



APPROXIMATE GROSS INTERNAL FLOOR AREA 51.31 SQ M / 552 SQ FT
THIS FLOOR PLAN IS FOR ILLUSTRATIVE PURPOSES ONLY AND
SHOULD BE USED FOR THIS PURPOSE BY PROSPECTIVE APPLICANTS AS ITS NOT TO SCALE.

(c) AMBERSHORE PIX LIMITED / PHOTO - VIDEO - FLOOR PLANS / 0800 999 1577 / WWW.AMBERSHOREPIX.CO.UK

Where no figures are shown, we have been unable to ascertain the information. All figures that are shown were correct at the time of printing.

Winkworth Maida Vale

020 7289 1692 | maidavale@winkworth.co.uk

Winkworth

for every step...

Winkworth wishes to inform prospective buyers and tenants that these particulars are a guide and act as information only. All our details are given in good faith and believed to be correct at the time of printing but they don't form part of an offer or contract. No Winkworth employee has authority to make or give any representation or warranty in relation to this property. All fixtures and fittings, whether fitted or not are deemed removable by the vendor unless stated otherwise and room sizes are measured between internal wall surfaces, including furnishings.