



NEWINGTON GREEN MANSIONS, GREEN LANES, LONDON, N16
£450,000 LEASEHOLD

A WONDERFUL TWO BEDROOM APARTMENT MOMENTS FROM NEWINGTON GREEN

Islington | 0207 354 2480 | islington@winkworth.co.uk

Winkworth

winkworth.co.uk

See things differently



DESCRIPTION:

Set over the first floor of this charming mansion block moments from Newington Green is a fantastic two bed flat. Spanning in excess of 600 sqft of lateral space the property consists of a bright open-plan kitchen living space, perfect for entertaining. Off the hallway you have two double bedrooms, and a modern family bathroom. The property further benefits from communal gardens and is offered to the market chain free.

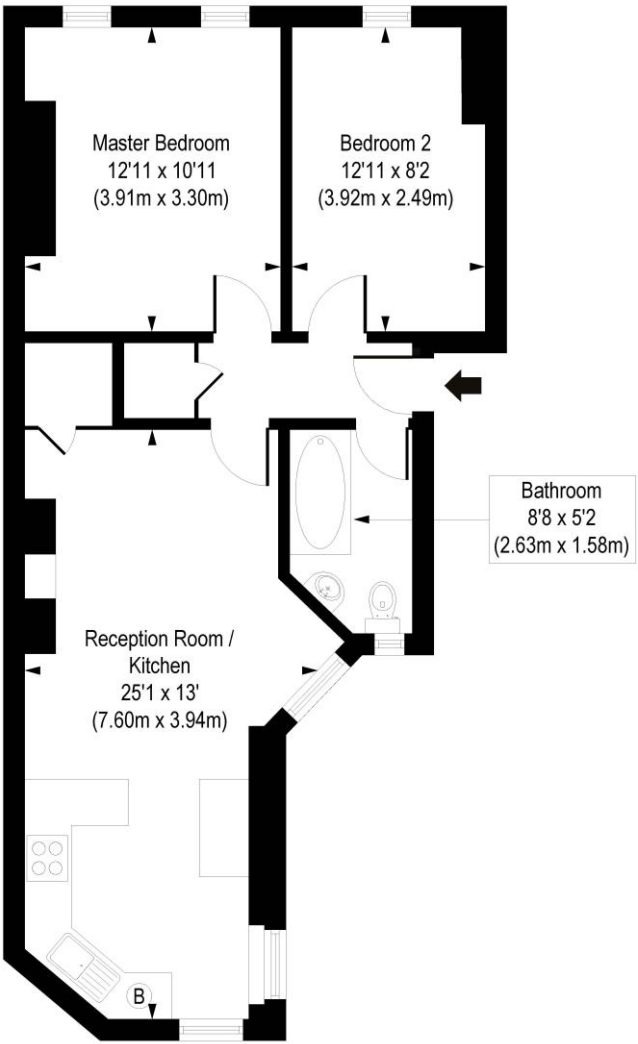
Newington Green offers a wide array of cafes and restaurants and is well known for its selection of local shops and village atmosphere. The green spaces of Clissold park are just a short distance away and transport across London is made easy from Canonbury over ground as well as numerous bus routes providing routes to the City, Angel and West End.

Winkworth



Winkworth

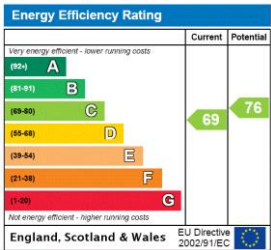
Newington Green Mansions, Green Lane, N16
 Approx. Gross Internal Floor Area 628 sq. ft / 58.33 sq. m



First Floor

COMPLIANT WITH RICS CODE OF MEASURING PRACTICE. Floorplan is for illustrative purposes only and is not to scale. Every attempt has been made to ensure the accuracy of the floorplan shown, however all measurements, fixtures, fittings and data shown are an approximate interpretation for illustrative purposes only. Liability for errors, omissions or mis-statement through negligence or otherwise is hereby excluded.

This floorplan is for illustration purposes only and is not to scale. The position and size of doors, windows, appliances and other features are approximate.



Islington | 0207 354 2480 | islington@winkworth.co.uk



winkworth.co.uk

See things differently

Winkworth wishes to inform prospective buyers and tenants that these particulars are a guide and act as information only. All our details are given in good faith and believed to be correct at the time of printing but they don't form part of an offer or contract. No Winkworth employee has authority to make or give any representation or warranty in relation to this property. All fixtures and fittings, whether fitted or not are deemed removable by the vendor unless stated otherwise and room sizes are measured between internal wall surfaces, including furnishings.