



St Aubyns Road, London, SE19

OIEO £325,000 *Leasehold*



We are pleased to offer this spacious one double bedroom period conversion, located in the heart of Crystal Palace, just off the Triangle with a newly extended long lease.

KEY FEATURES

- Leasehold - newly extended long lease
- One double bedroom
- Lower ground floor
- Direct access to patio
- Good condition
- Great location - close to local amenities and transport links



Crystal Palace

02038693222 | crystalpalace@winkworth.co.uk

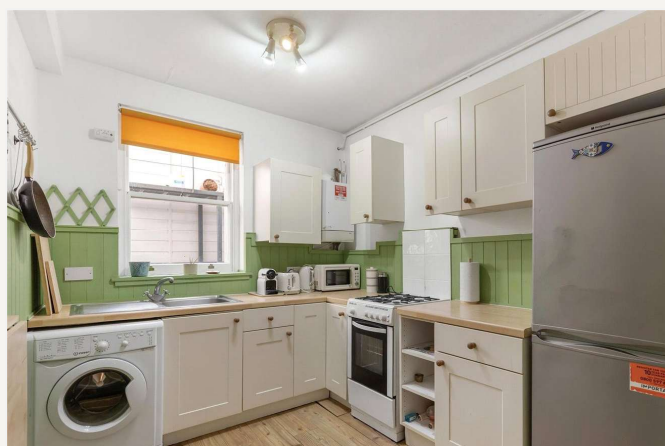
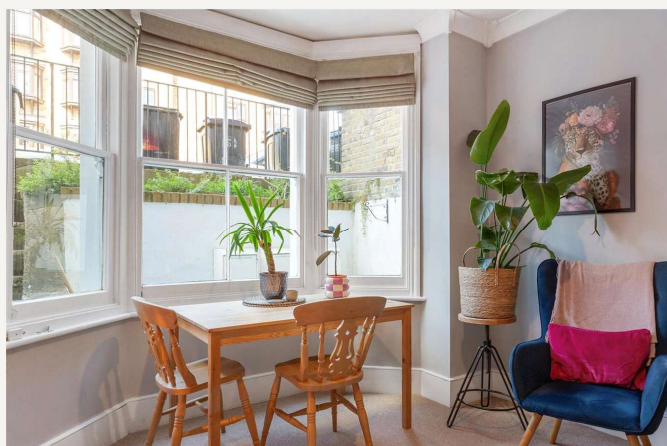
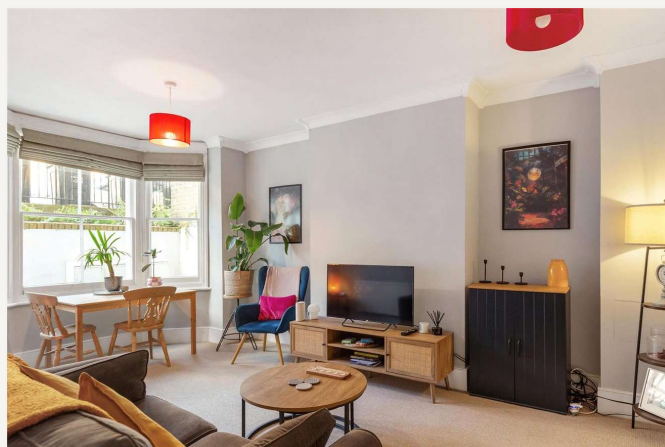
Winkworth

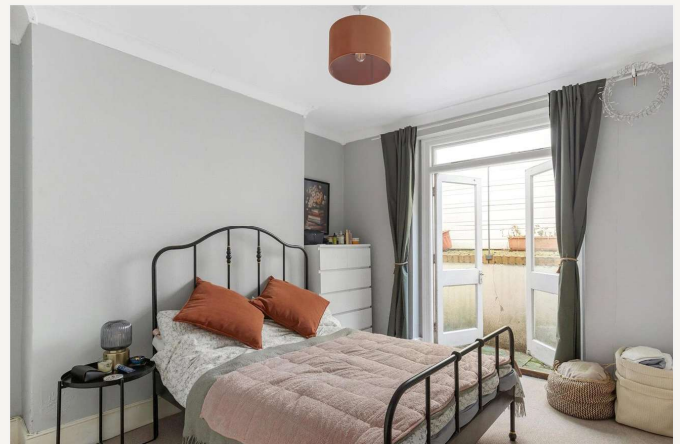
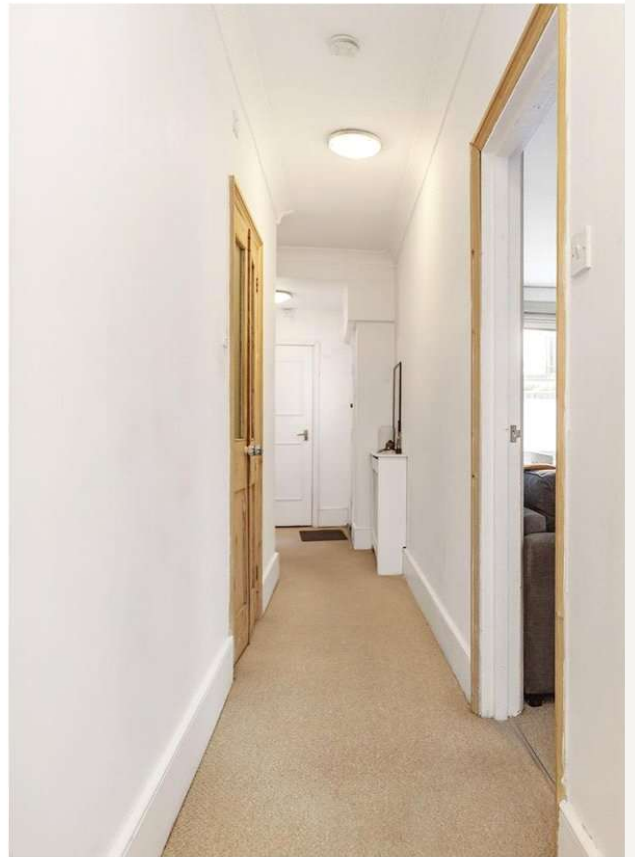
for every step...



Located on the lower ground floor the flat comprises, large reception, separate fitted kitchen, modern bathroom and good sized double bedroom. The property further benefits from having direct access to patio at the rear.

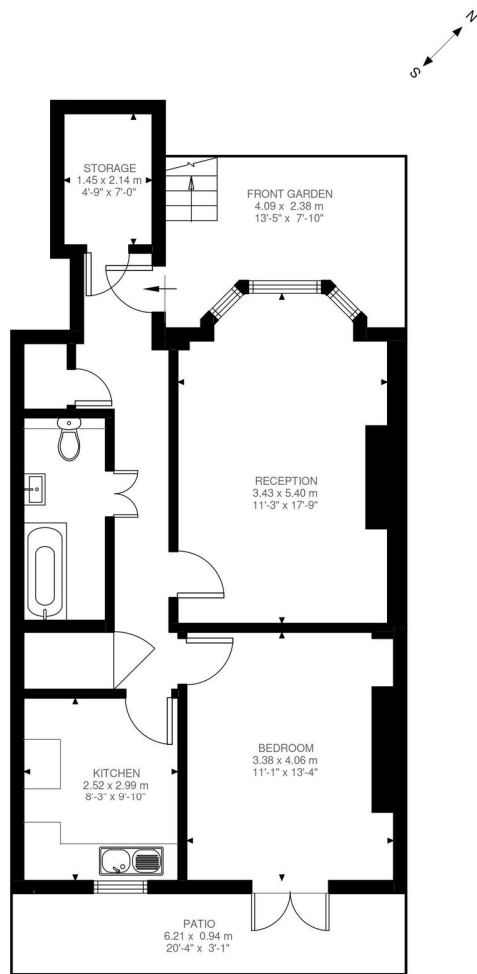
St Aubyn's Road is located off Westow Hill and on the doorstep of the fabulous shops, bars and restaurants available on the triangle. Crystal Palace and Gipsy Hill stations are both within easy reach which offer direct links in London.





MATERIAL INFO

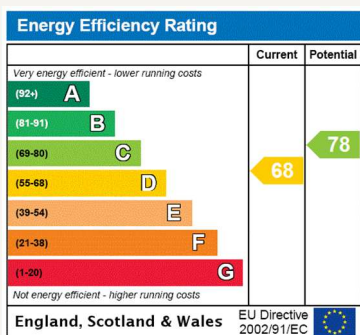
Tenure: Leasehold
Term: 184 year and 8 months
Service Charge: £2640 per annum
Ground Rent: £ 120
Council Tax Band: B
EPC rating: D



Lower Ground Floor
639 ft²

St Aubyns Road, SE19
Approximate Gross Internal Area
59.38 SQ.M / 639 SQ.FT

Illustration for identification purposes only. Not to scale.
Floor Plan Drawn According To RICS Guidelines.



Where no figures are shown, we have been unable to ascertain the information. All figures that are shown were correct at the time of printing.

Crystal Palace

02038693222 | crystalpalace@winkworth.co.uk

Winkworth

for every step...

Winkworth wishes to inform prospective buyers and tenants that these particulars are a guide and act as information only. All our details are given in good faith and believed to be correct at the time of printing but they don't form part of an offer or contract. No Winkworth employee has authority to make or give any representation or warranty in relation to this property. All fixtures and fittings, whether fitted or not are deemed removable by the vendor unless stated otherwise and room sizes are measured between internal wall surfaces, including furnishings.