



GLENTON ROAD, LEWISHAM, LONDON, SE13 5RS
£350,000 LEASEHOLD

A SPACIOUS, BRIGHT AND AIRY, ONE DOUBLE BEDROOM PERIOD CONVERSION OCCUPYING THE TOP (SECOND) FLOOR OF THIS IMPRESSIVE FOUR STOREY VICTORIAN HOUSE IN THIS POPULAR LOCATION CLOSE TO BLACKHEATH VILLAGE AND LEWISHAM STATION AND DLR.

Blackheath | 0208 8520999 | blackheath@winkworth.co.uk

Winkworth



DESCRIPTION:

With an entrance on the first floor and stairs up, the accommodation briefly comprises; a 13'0 x 12'10 living room and a separate and large 13'0 x 9'2 modern kitchen. Both the living room and kitchen have a south facing aspect. There is a good size double bedroom with built in wardrobes and a lovely modern bathroom. This property is in excellent condition with sash windows and gas fired central heating.

This is a great conversion flat and your immediate viewing is essential. Video tour can be seen at winkworth.co.uk

The property is in a very desirable location and is perfect for the commute into the city with both Blackheath and Hither Green Stations only 0.5 miles away, and Lewisham Station and DLR is 0.7 miles away. The property is in close proximity to local shops and Sainsbury's at Lee Green. The popular open spaces of Manor House Gardens, (0.2miles), Blackheath Common, (0.6miles), and Greenwich Park, (0.9 miles), are all within a short

AT A GLANCE

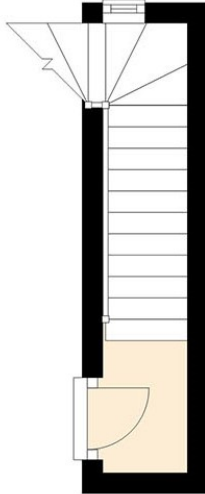
- period conversion
- one double bedroom
- first floor
- excellent condition
- separate kitchen
- modern bathroom
- close to shops





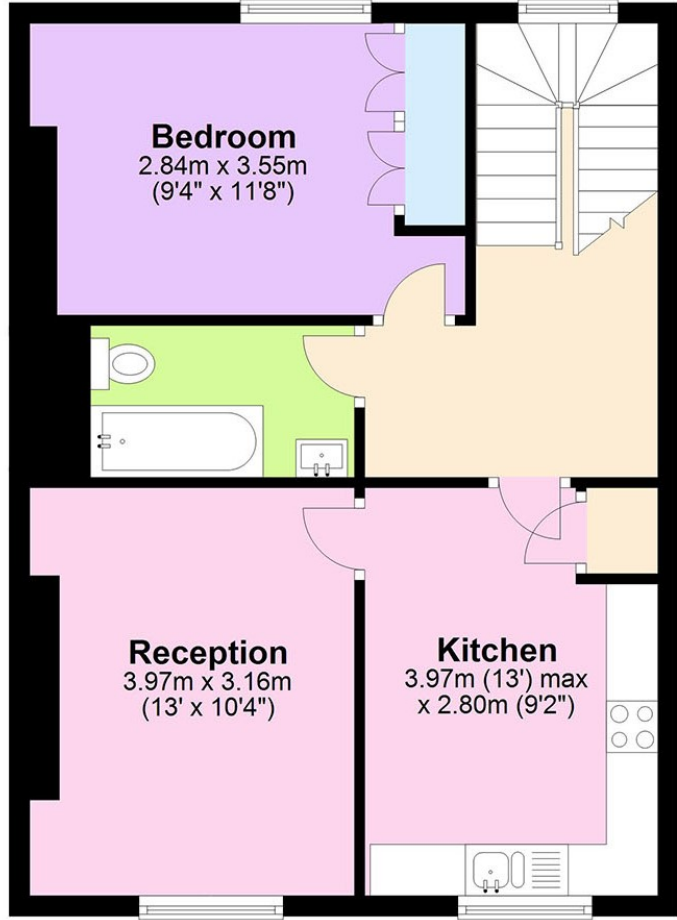
First Floor

Approx. 3.6 sq. metres (38.8 sq. feet)



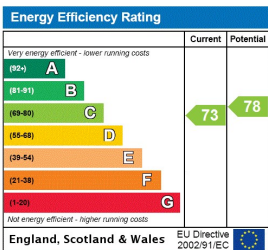
Second Floor

Approx. 50.6 sq. metres (545.1 sq. feet)



Total area: approx. 54.2 sq. metres (583.9 sq. feet)

This floorplan is for illustration purposes only and is not to scale. The position and size of doors, windows, appliances and other features are approximate. Any lease and service charge details have been provided by the vendor. Any interest party should have these checked by a solicitor as part of the purchase process.



Blackheath | 0208 8520999 | blackheath@winkworth.co.uk



winkworth.co.uk

See things differently

Winkworth wishes to inform prospective buyers and tenants that these particulars are a guide and act as information only. All our details are given in good faith and believed to be correct at the time of printing but they don't form part of an offer or contract. No Winkworth employee has authority to make or give any representation or warranty in relation to this property. All fixtures and fittings, whether fitted or not are deemed removable by the vendor unless stated otherwise and room sizes are measured between internal wall surfaces, including furnishings.