



10 ST THOMAS PLACE, MILITARY ROAD, CANTERBURY, CT1
£1,100 PER MONTH FURNISHED

Canterbury | 01227 456 645 | canterbury@winkworth.co.uk

Winkworth

for every step...

winkworth.co.uk



DESCRIPTION:

Georgian style first floor, two bedroom apartment looking towards the Cathedral with open plan living marrying contemporary design and modern finishes



Winkworth

for every step...



A spacious light and airy apartment with a modern open plan living area with big windows and sleek lines throughout. The developers are Rogate, a renowned local Company with a reputation for a high quality finish.

The kitchen is fully equipped with modern units and an island, integrated units and modern worksurfaces.

There are two double bedrooms, the main with an en suite shower and there is a separate shower room too.

This property would be ideal for a couple or two working professionals.

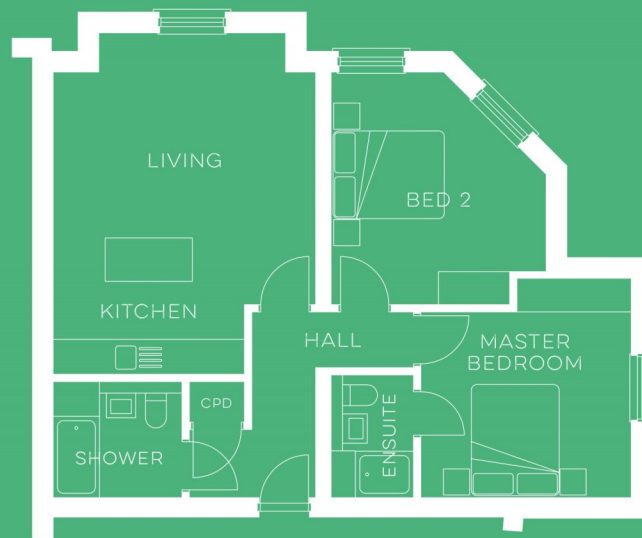
Situated on the edge of the historical City of Canterbury, just a short walk away from the Cathedral Precincts

Winkworth

for every step...

TWO &FOUR

TWO BED APARTMENTS



LIVING / KITCHEN - 5.8 M (MAX) X 4.8 M | **MASTER BED** - 3.8 M (MAX) X 3.6 M | **BED 2** - 4.0 M X 3.7 M

A modern

2-bedroom apartment with two shower rooms
one of which is en-suite.

This floorplan is for illustration purposes only and is not to scale. The position and size of doors, windows, appliances and other features are approximate.

Energy Efficiency Rating	
	Current Potential
Very energy efficient - lower running costs	
(92+) A	
(81-91) B	84 84
(69-80) C	
(55-68) D	
(39-54) E	
(21-38) F	
(1-20) G	
Not energy efficient - higher running costs	
England, Scotland & Wales	EU Directive 2002/91/EC

Canterbury | 01227 456 645 | canterbury@winkworth.co.uk

Winkworth

for every step...

winkworth.co.uk

Winkworth wishes to inform prospective buyers and tenants that these particulars are a guide and act as information only. All our details are given in good faith and believed to be correct at the time of printing but they don't form part of an offer or contract. No Winkworth employee has authority to make or give any representation or warranty in relation to this property. All fixtures and fittings, whether fitted or not are deemed removable by the vendor unless stated otherwise and room sizes are measured between internal wall surfaces, including furnishings.