



LODORE GARDENS, KINGSBURY, LONDON, NW9

£650,000 FREEHOLD

CHAIN FREE SEMI DETACHED THREE BEDROOM HOUSE

- COUNCIL TAX BAND E - BRENT

Kingsbury | 020 8204 0000 | kingsbury@winkworth.co.uk

Winkworth

winkworth.co.uk

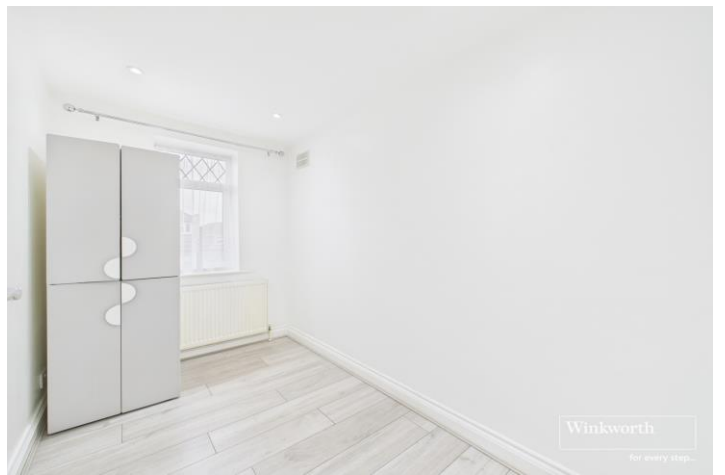
See things differently

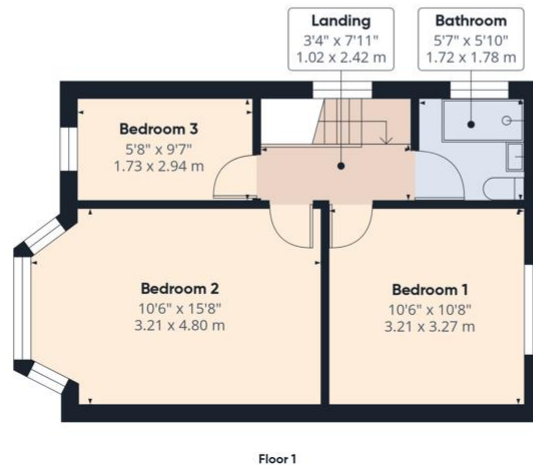
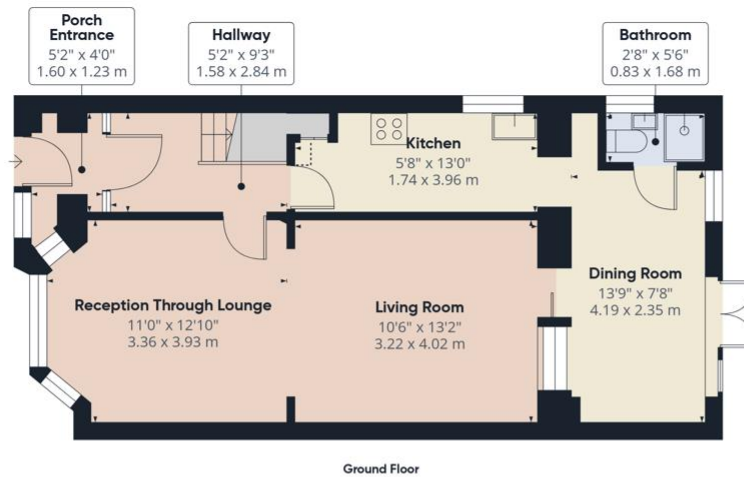


Chain free and recently renovated, this three-bedroom semi-detached home offers bright, versatile living space and a clean fresh décor throughout — the ideal blank canvas ready for a new family's personal touch. Extended to the rear at ground level, the property features a generous double reception room filled with natural light, and a charming dining room overlooking the full of potential south-facing garden. The modern kitchen is complemented by a convenient ground floor shower room. Upstairs, the first-floor hosts three well-proportioned bedrooms and a contemporary family bathroom. Situated on a lovely residential road within the ever-popular Springfield Estate, the home is ideally positioned within the catchment for Oliver Goldsmith Primary School & Kingsbury High. Excellent local amenities can be found nearby along both Edgware Road and Kingsbury Road, including shops, parks, places of worship, eateries, and superb transport links. With further potential for extension (STPP), this property presents a fantastic opportunity for first-time buyers and investors alike.



Winkworth





Winkworth

Approximate total area⁽¹⁾
 944 ft²
 87.7 m²

Reduced headroom
 1 ft²
 0.1 m²

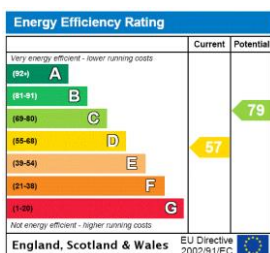
(1) Excluding balconies and terraces

Reduced headroom
 Below 5 ft/1.5 m

Calculations reference the RICS IPMS 3C standard. Measurements are approximate and not to scale. This floor plan is intended for illustration only.

GIRAFFE360

This floorplan is for illustration purposes only and is not to scale. The position and size of doors, windows, appliances and other features are approximate.



Kingsbury | 020 8204 0000 | kingsbury@winkworth.co.uk

Winkworth

winkworth.co.uk

See things differently

Winkworth wishes to inform prospective buyers and tenants that these particulars are a guide and act as information only. All our details are given in good faith and believed to be correct at the time of printing but they don't form part of an offer or contract. No Winkworth employee has authority to make or give any representation or warranty in relation to this property. All fixtures and fittings, whether fitted or not are deemed removable by the vendor unless stated otherwise and room sizes are measured between internal wall surfaces, including furnishings.