



**GRAHAM ROAD, HACKNEY, LONDON, E8**  
**£1,300 PER MONTH UNFURNISHED**

## **A ONE BEDROOM TOP FLOOR FLAT IN VICTORIAN PROPERTY**

**Hackney | 020 8986 4216 | [hackney@winkworth.co.uk](mailto:hackney@winkworth.co.uk)**

**Winkworth**

Tenant Fees Apply: Details of fees for tenant referencing, tenancy agreement admin fees and renewal fees are available on the Winkworth website and the link can be found with the displayed rent for the property. Tenants should ensure they are fully conversant with these upfront fees and other costs that are involved at the outset of the tenancy before making an offer to rent and your local Winkworth office will provide written details upon request.

[winkworth.co.uk](http://winkworth.co.uk)

See things differently



### **DESCRIPTION:**

Winkworth are pleased to offer this delightful one bedroom apartment on the top floor of a substantial Victorian residence. Located in the heart of Hackney Central close to local shopping and transport facilities. At over 500sq/ft It offers a bright reception room, separate fitted kitchen, one double bedroom, and bathroom suite.

Early viewings are highly recommended as this property is certainly priced to go!

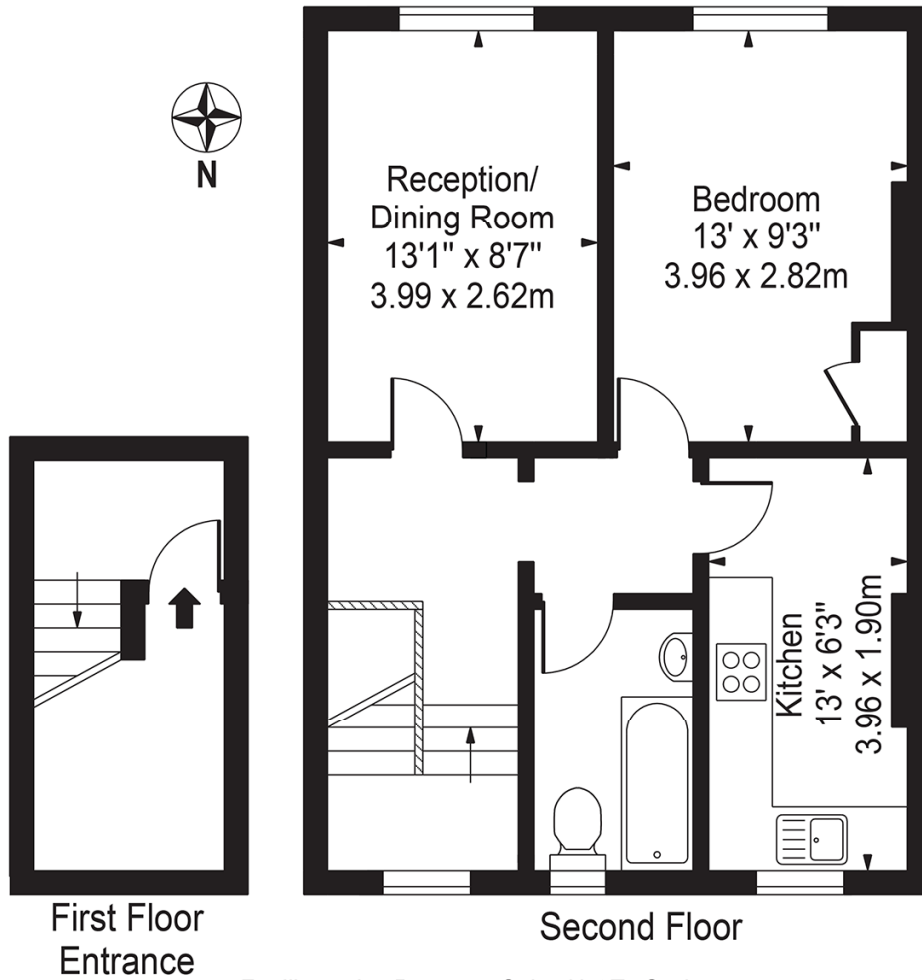
**Winkworth**



**Winkworth**

# Graham Road

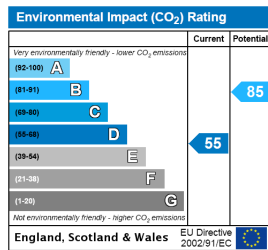
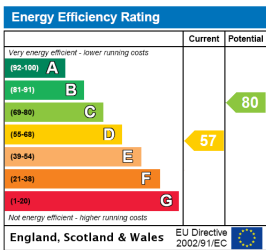
Approx. Gross Internal Area 515 Sq Ft - 47.85 Sq M



For Illustration Purposes Only - Not To Scale

This floor plan should be used as a general outline for guidance only and does not constitute in whole or in part an offer or contract. Any intending purchaser or lessee should satisfy themselves by inspection, searches, enquiries and full survey as to the correctness of each statement. Any areas, measurements or distances quoted are approximate and should not be used to value a property or be the basis of any sale or let.

This floorplan is for illustration purposes only and is not to scale. The position and size of doors, windows, appliances and other features are approximate.



Hackney | 020 8986 4216 | [hackney@winkworth.co.uk](mailto:hackney@winkworth.co.uk)



[winkworth.co.uk](http://winkworth.co.uk)

See things differently

Winkworth wishes to inform prospective buyers and tenants that these particulars are a guide and act as information only. All our details are given in good faith and believed to be correct at the time of printing but they don't form part of an offer or contract. No Winkworth employee has authority to make or give any representation or warranty in relation to this property. All fixtures and fittings, whether fitted or not are deemed removable by the vendor unless stated otherwise and room sizes are measured between internal wall surfaces, including furnishings.