



MASEFIELD AVENUE, HERTFORDSHIRE, WD6
£910,000 FREEHOLD

**AM IMMACULATELY PRESENTED FOUR
BEDROOM, TWO BATHROOM FAMILY HOUSE IN
SOUTH BOREHAMWOOD.**

Borehamwood | 020 8953 8899 | borehamwood@winkworth.co.uk



Winkworth

DESCRIPTION:

Having recently been subject to complete programme of extension and refurbishment this deceptively spacious four bedroom house has been finished with meticulous attention to detail and is immaculately presented throughout.

Offered for sale Chain Free, the property is located in a sought after turning just off Furzehill Road on the South side of Borehamwood, within the Eruv and close to several "Good" and Outstanding Ofsted rated schools including Yavneh.

Elstree and Borehamwood Thameslink Station is approx. 0.75 mile walk away and the popular 107 and 292 bus routes are located nearby.

AT A GLANCE

- 4 Bedrooms
- Two Bathrooms
- 1611 Square Feet
- Guest Cloakroom
- Utility Room
- South Borehamwood
- Chain Free
- Large Rear Garden



Winkworth



Winkworth



Approximate Gross Internal Area = 149.7 sq m / 1611 sq ft
(Excluding Eaves)

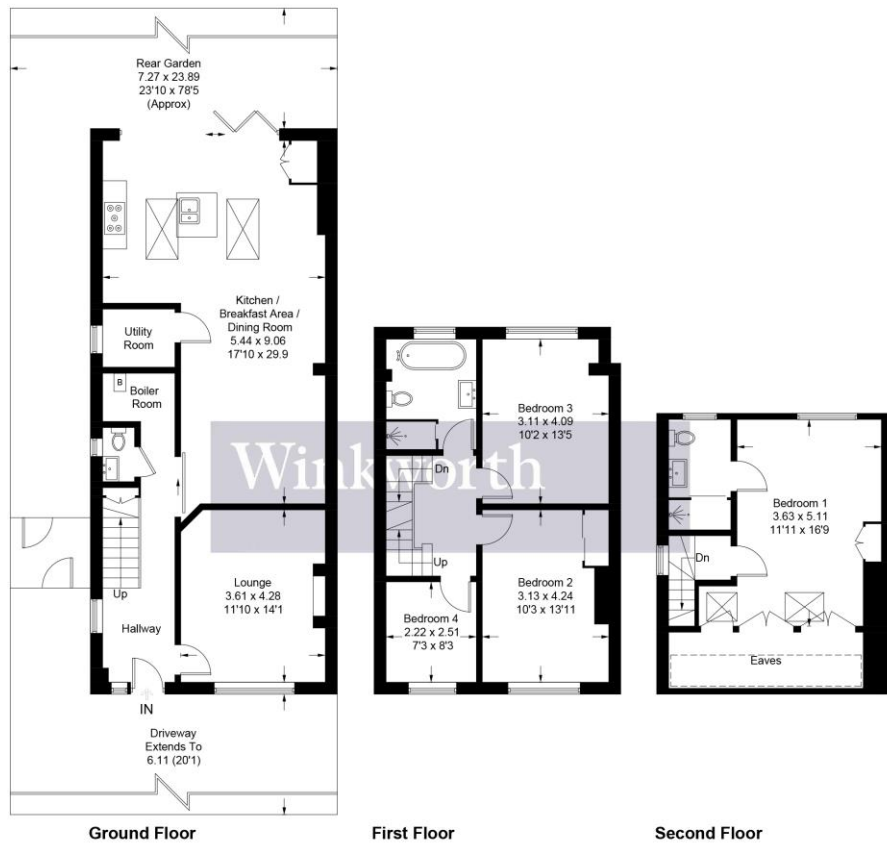


Illustration for identification purposes only, measurements are approximate,
not to scale. Winkworth © 2023 (ID911378)

This floorplan is for illustration purposes only and is not to scale. The position and size of doors, windows, appliances and other features are approximate.

