

Manchester Street, London, W1U

£6,950,000 *FREEHOLD*

5  3  5 



Winkworth Mayfair
020 7589 6616 | sales.mayfair@winkworth.co.uk

Winkworth

for every step...

Elegant five-storey Marylebone townhouse moments from the High Street.

ABOUT THIS HOUSE

A bright and spacious period townhouse and a well-appointed kitchen. The of approximately 3,464 sq. ft., arranged over five floors and superbly located within walking distance of Marylebone High Street, Baker Street and Oxford Street. The property is presented in good decorative condition and offers excellent

family and entertaining space, including three reception rooms, a conservatory, master bedroom suite with dressing room and ensuite bathroom, four further ensuite bedrooms, a guest WC, storage vaults, and a private patio garden.

For sale by receivers.

KEY FEATURES

- 5 bedrooms
- 3 reception room
- 5 bathrooms
- 3,464 Square Feet
- Period Building
- Freehold











FINER DETAILS

- 5 bedrooms
- 3 reception room
- 5 bathrooms
- 3,464 Square Feet
- Period Building
- Freehold

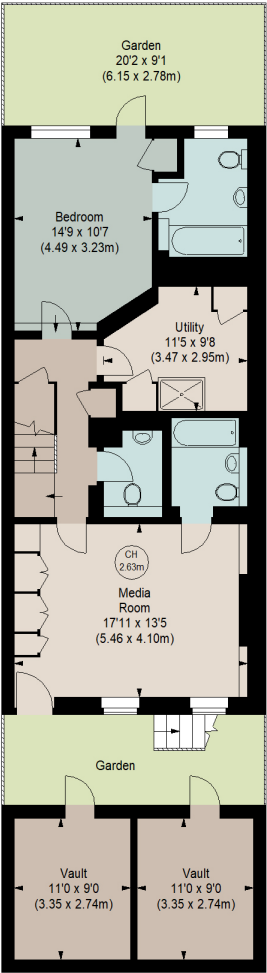
Score	Energy rating	Current	Potential
92+	A		
81-91	B		
69-80	C		
55-68	D		
39-54	E		
21-38	F		
1-20	G		
		72 C	84 B

MANCHESTER STREET, W1U

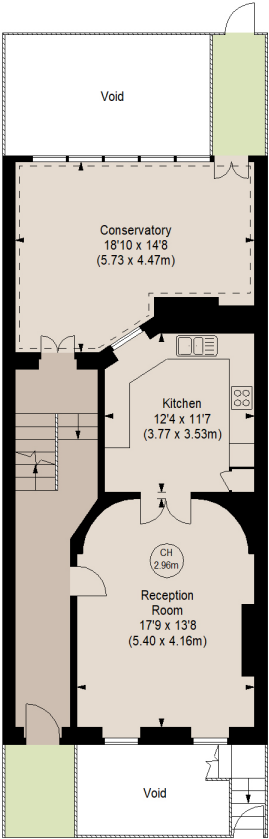
Approximate gross internal area
3464 sq ft / 321.81 sq m
(Including Vaults)
Vaults
204 sq ft / 18.93 sq m



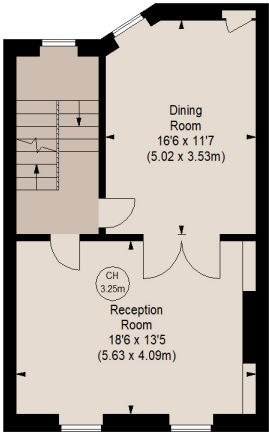
Key :
CH - Ceiling Height



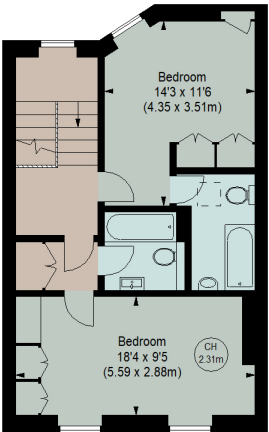
LOWER GROUND FLOOR
(91.77 m²)



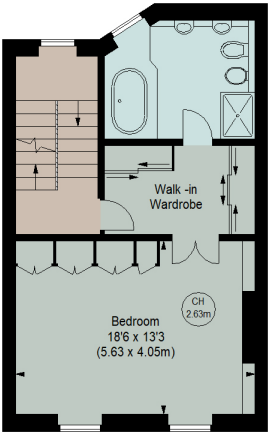
GROUND FLOOR
(76.10 m²)



FIRST FLOOR
(51.38 m²)



THIRD FLOOR
(51.38 m²)



SECOND FLOOR
(51.18 m²)

Although every attempt has been made to ensure accuracy, all measurements are approximate.
This floorplan is for illustrative purposes only and not to scale.
Measured in accordance with RICS standards.



Winkworth Mayfair
020 7589 6616 | sales.mayfair@winkworth.co.uk

Winkworth

for every step...