



ROSEBERY COURT, LONDON, EC1R
£575,000

**A WELL PRESENTED TWO BEDROOM APARTMENT,
SITUATED ON THE SECOND FLOOR OF THIS MODERN
PURPOSE BUILT DEVELOPMENT.**

Clerkenwell | 020 7405 1288 | clerkenwell@winkworth.co.uk



for every step...

winkworth.co.uk



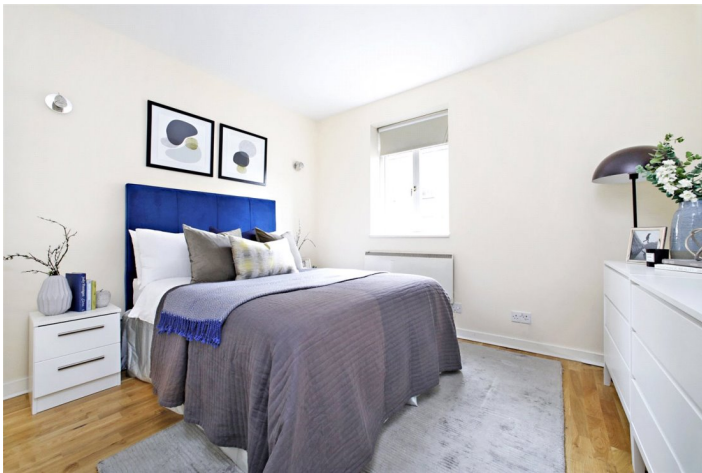
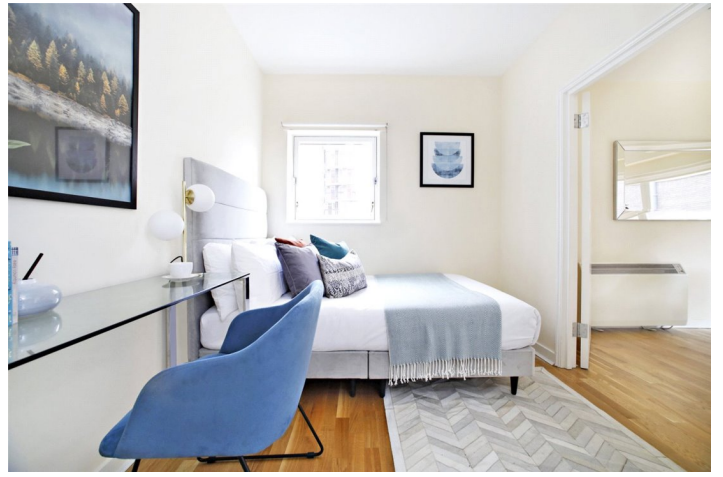
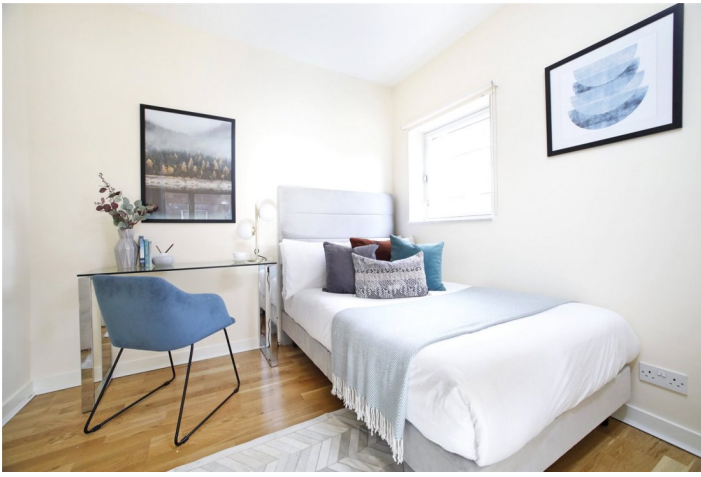
DESCRIPTION:

Comprising double bedroom and second study/double bedroom, separate fitted kitchen, bathroom, and lounge with access to private south facing balcony. The property has recently refurbished and benefits from neutral decor throughout. The property further benefits from lift access, having half day portorage and communal gardens. Rosebery Court is well located on Rosebery Avenue, walking distance to Farringdon and Angel tube stations and very close to Exmouth Market and Sadler's Wells Theatre. It is ideal for easy commute both to the West End and the City.



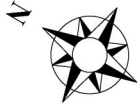
Winkworth

for every step...

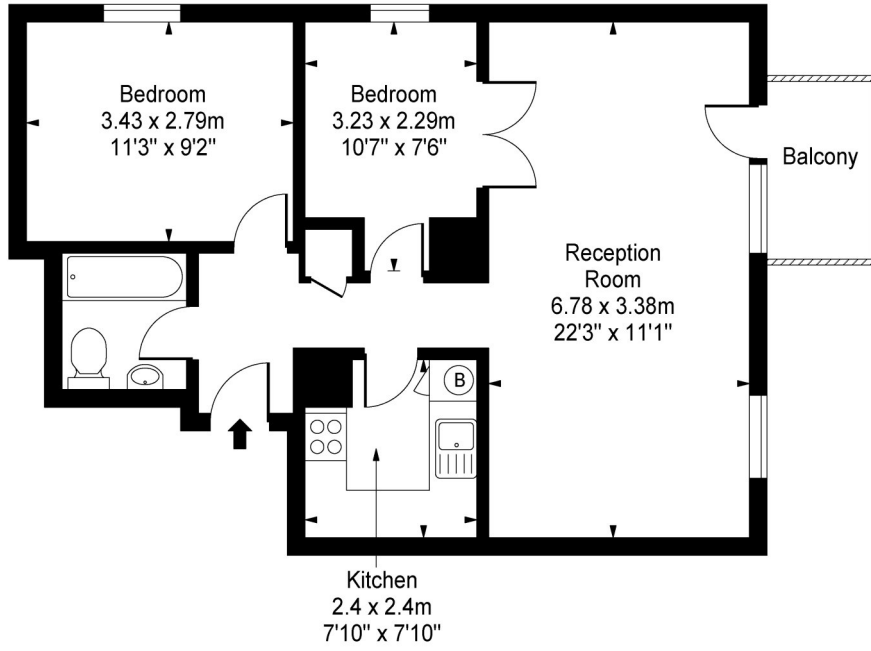


Winkworth

for every step...



Rosebery Avenue, EC1

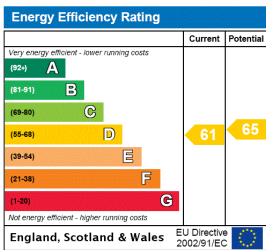


First Floor

Approx Gross Internal Area 576 Sq Ft - 53.50 Sq M

This floor plan should be used as a general outline for guidance only and does not constitute in whole or in part an offer or contract. Any intending purchaser or lessee should satisfy themselves by inspection, searches, enquiries and full survey as to the correctness of each statement. Any areas, measurements or distances quoted are approximate and should not be used to value a property or be the basis of any sale or let.

This floorplan is for illustration purposes only and is not to scale. The position and size of doors, windows, appliances and other features are approximate.



Clerkenwell | 020 7405 1288 | clerkenwell@winkworth.co.uk



for every step...

winkworth.co.uk

Winkworth wishes to inform prospective buyers and tenants that these particulars are a guide and act as information only. All our details are given in good faith and believed to be correct at the time of printing but they don't form part of an offer or contract. No Winkworth employee has authority to make or give any representation or warranty in relation to this property. All fixtures and fittings, whether fitted or not are deemed removable by the vendor unless stated otherwise and room sizes are measured between internal wall surfaces, including furnishings.