



Maida Vale, W9

£475,000 *Share of Freehold*



An opportunity to purchase a well-proportioned one-bedroom eighth floor apartment with wonderful views over London, forming part of this well-known purpose-built block with the added advantage of a lift, porterage, communal heating and hot water and a wealth of natural light. The apartment is ready for immediate occupation, with a spacious reception room, a fully fitted kitchen, a principal bedroom and a bathroom. Clive Court is situated in the heart of this sought after area close to all the local amenities, (Approx. 0.2 Miles) to the boutique shops, cafes on Clifton Road, the famous Regents canal and the underground at Warwick Avenue (Approx. 0.5 Miles).



Winkworth Maida Vale

020 7289 1692 | maidavale@winkworth.co.uk

Winkworth

for every step...



KEY FEATURES

- Principal Bedroom
- One Bathroom
- Spacious Reception Room
- Fully Fitted Kitchen
- Lift
- Porterage
- Communal Heating and Hot Water



MATERIAL INFO

Tenure: Share of Freehold

Lease Expiry Date: 22/10/3017

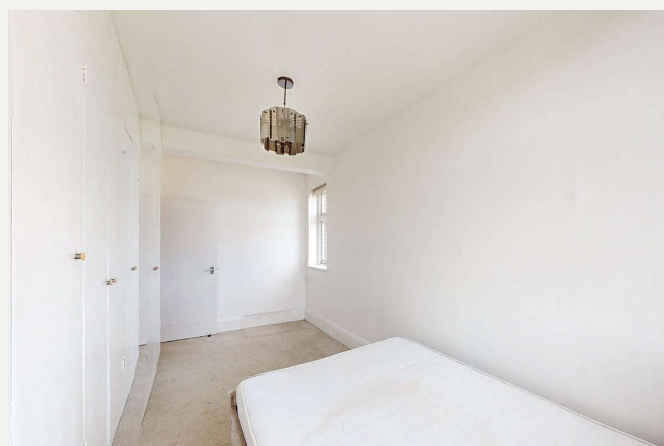
Service Charge: £4,099.84 per annum

Service Charge Note: includes reserve funds contribution of £872.96 per annum

Ground Rent: £0 Annually (subject to increase)

Council Tax Band: F

EPC rating: D



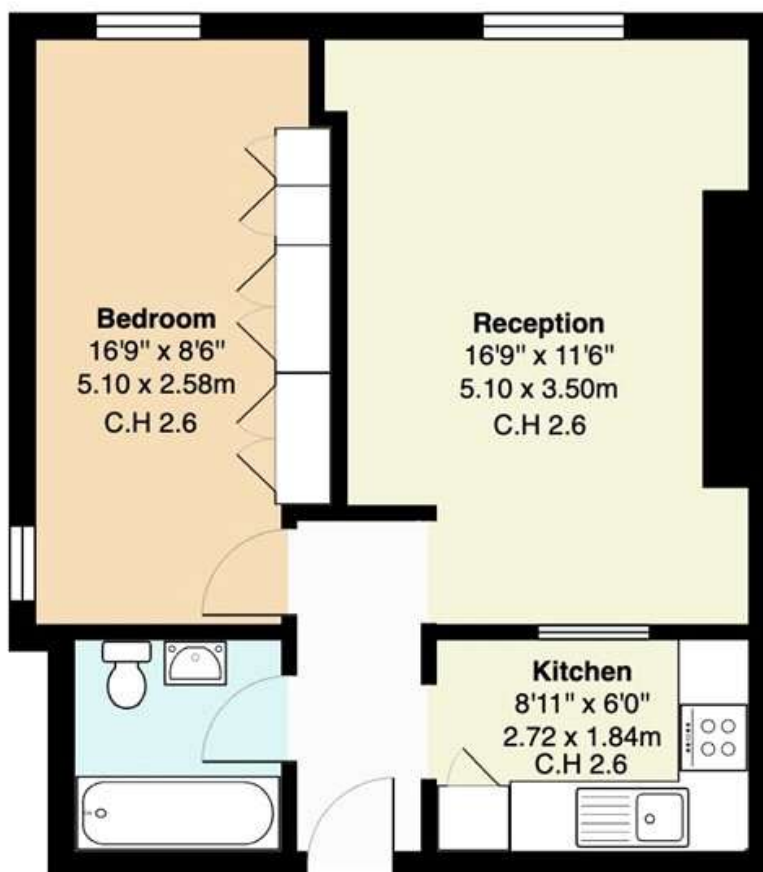


Score	Energy rating	Current	Potential
92+	A		
81-91	B		
69-80	C		76 C
55-68	D	60 D	
39-54	E		
21-38	F		
1-20	G		

For more information, scan the QR code or visit the link below



<https://www.winkworth.co.uk/sale/property/MDV250154>



8th floor

Clive Court, Maida Vale ,W9

Total Gross Area: 467 ft² ... 43.4 m²

C.H : Ceiling Height

All measurements are approximate and for identification guideline purposes only, not to scale.
Compliant with the RICS code of measuring practice

Where no figures are shown, we have been unable to ascertain the information. All figures that are shown were correct at the time of printing.

Winkworth Maida Vale

020 7289 1692 | maidavale@winkworth.co.uk

Winkworth

for every step...

Winkworth wishes to inform prospective buyers and tenants that these particulars are a guide and act as information only. All our details are given in good faith and believed to be correct at the time of printing but they don't form part of an offer or contract. No Winkworth employee has authority to make or give any representation or warranty in relation to this property. All fixtures and fittings, whether fitted or not are deemed removable by the vendor unless stated otherwise and room sizes are measured between internal wall surfaces, including furnishings.