



ST. LAWRENCE TERRACE, W10  
**£2,200 PER MONTH FURNISHED**

**Winkworth**



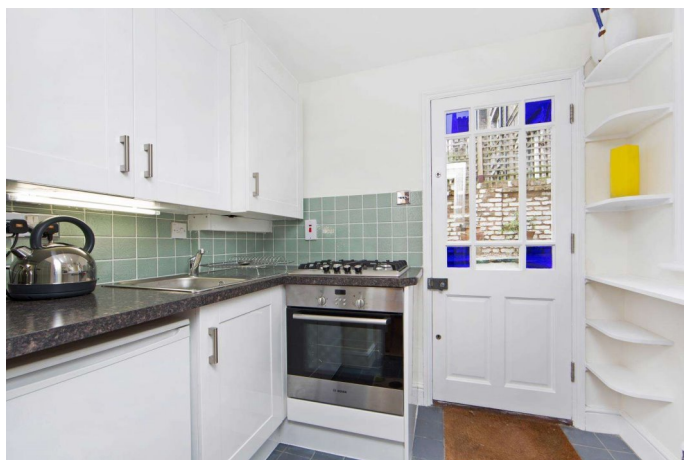
## ST. LAWRENCE TERRACE, W10

Spacious One-Bedroom Flat with Private Entrance and Garden Patio – Ladbroke Grove, Notting Hill

This bright and spacious one-bedroom flat is ideally situated on a charming residential street in Ladbroke Grove, Notting Hill. Boasting its own private entrance, the property offers excellent living space, ample storage, a modern fully fitted kitchen, and a delightful private garden patio — perfect for relaxing or entertaining.

### LOCATION

Located on St. Lawrence Terrace, the flat is just moments from Ladbroke Grove Tube Station, offering convenient transport links. You're also a short stroll from the vibrant heart of Notting Hill and the iconic Portobello Road, with its exceptional shopping, dining, and entertainment options.



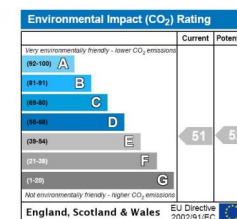
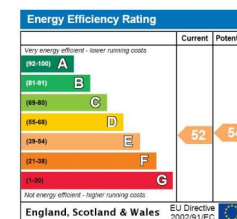




ST LAWRENCE TERRACE, W10  
TOTAL APPROX. FLOOR PLAN AREA 586 SQ.FT. (54 SQ.M.)  
GROUND FLOOR



All measurements walls, doors, windows, fittings and their appliances, their size and locations are shown conventionally and are approximate only and cannot be regarded as being a representation either by the seller or his agent nor zentuvo  
[www.zentuvo.co.uk](http://www.zentuvo.co.uk)



North Kensington | 020 7792 5000 | [northkensington@winkworth.co.uk](mailto:northkensington@winkworth.co.uk)