



SKYLARK HOUSE, READING, BERKSHIRE, RG2 0PA  
**£1,800 PER MONTH FURNISHED**

## A LUXURY TWO BEDROOM PENTHOUSE APARTMENT ENJOYING FAR REACHING VIEWS OVER READING

Reading | 0118 4022 300 | [reading@winkworth.co.uk](mailto:reading@winkworth.co.uk)

**Winkworth**

for every step...

[winkworth.co.uk](http://winkworth.co.uk)





## DESCRIPTION:

This two bedroom top floor apartment enjoys stunning far reaching views over Reading and the Berkshire countryside from its private balcony. The modern apartment is situated on the 7th floor (top floor) of Skylark House and is situated in the popular Kennet Island Development with its excellent links to Reading Town Centre, the M4 at junction 11 and Green Park. Accommodation comprises two double bedrooms, the master with an en suite shower room, a further bathroom and an open plan living area and kitchen with integrated appliances. The property further benefits from lift access and a secure allocated parking space. Available 23rd September 2025. Furnished.

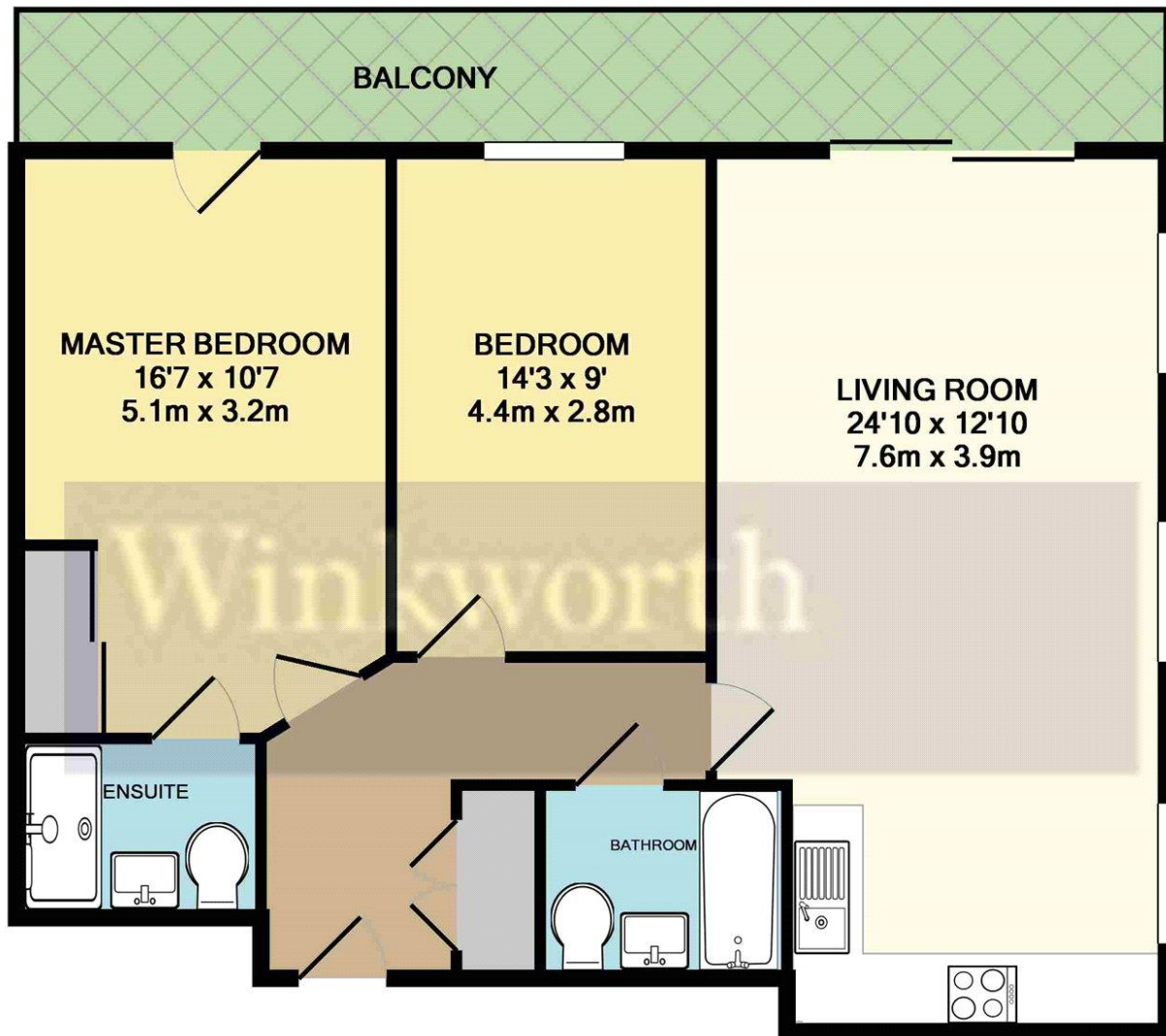
## AT A GLANCE

- Two Bedroom Penthouse Apartment
- 7th Floor With Lift Access
- Two bathrooms
- Private balcony
- Secure Gated Allocated Parking
- Council tax band C
- Available 23rd September
- Furnished









**TOTAL APPROX. FLOOR AREA 761 SQ.FT. (70.7 SQ.M.)**

Whilst every attempt has been made to ensure the accuracy of the floor plan contained here, measurements of doors, windows, rooms and any other items are approximate and no responsibility is taken for any error, omission, or mis-statement. This plan is for illustrative purposes only and should be used as such by any prospective purchaser. The services, systems and appliances shown have not been tested and no guarantee as to their operability or efficiency can be given  
Made with Metropix ©2017

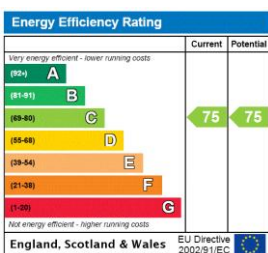
This floorplan is for illustration purposes only and is not to scale. The position and size of doors, windows, appliances and other features are approximate.

**Deposit: £2,076.92**

**Holding Deposit: £415.38**

**Council Tax Band: C**

Where no figures are shown, we have been unable to ascertain the information. All figures that are shown were correct at the time of printing.



Reading | 0118 4022 300 | [reading@winkworth.co.uk](mailto:reading@winkworth.co.uk)

[winkworth.co.uk](http://winkworth.co.uk)

Winkworth wishes to inform prospective buyers and tenants that these particulars are a guide and act as information only. All our details are given in good faith and believed to be correct at the time of printing but they don't form part of an offer or contract. No Winkworth employee has authority to make or give any representation or warranty in relation to this property. All fixtures and fittings, whether fitted or not are deemed removable by the vendor unless stated otherwise and room sizes are measured between internal wall surfaces, including furnishings.

**Winkworth**

**for every step...**