



CROPLEY COURT, CAVENDISH STREET, LONDON, N1  
£350,000 LEASEHOLD

## A FANTASTIC ONE BEDROOM APARTMENT IN ISLINGTON

Islington | 0207 354 2480 | [islington@winkworth.co.uk](mailto:islington@winkworth.co.uk)

**Winkworth**

[winkworth.co.uk](http://winkworth.co.uk)

See things differently



## DESCRIPTION:

This fantastic apartment offers bright, airy and well-proportioned accommodation throughout. Standing at 516sqft, the flat is located on the second floor of this well-kept block. The property consists of a spacious reception room as well as a separate kitchen with plenty worktop space, both rooms receiving an abundance of natural light throughout the day. There is a large double bedroom along with a tastefully decorated family bathroom. The property further benefits from secure fob-entry system and ample storage space.

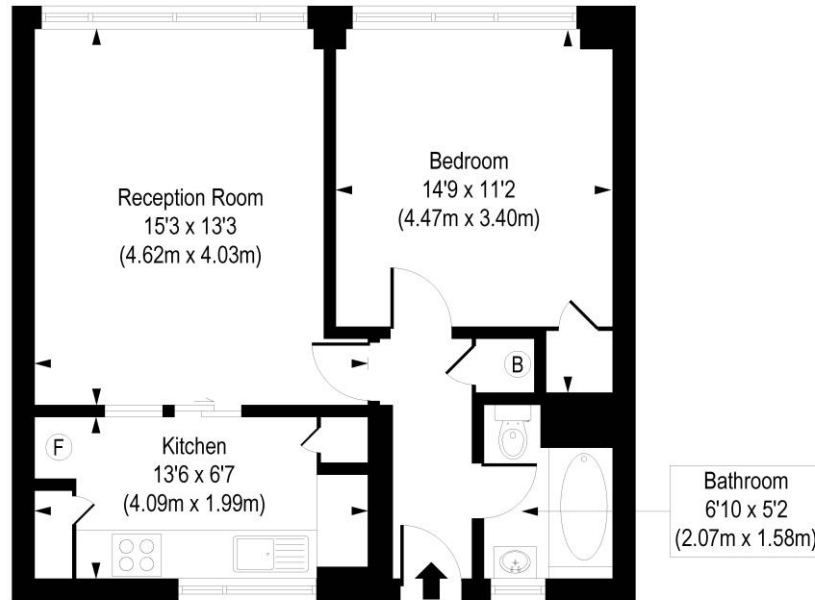
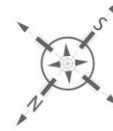
Cropley Court is perfectly situated for easy access to the City, Shoreditch and Upper Street with some fantastic transport links available nearby. Angel and Old Street station are both a short walk and within easy reach for the Northern line whilst Hoxton provides overground services to east and south London. An array of bus services provide effortless access across London whilst international transport is facilitated from St Pancras. The green spaces of Shoreditch Park are just seconds away as is the hugely popular Regents Canal which is dotted with a selection of fashionable eateries and bars along the waterside.

**Winkworth**



**Winkworth**

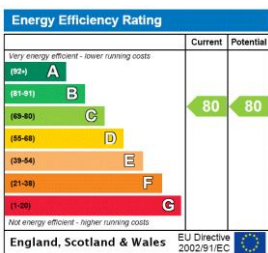
Cropley Court, Cavendish Street, N1  
 Approx. Gross Internal Floor Area 516 sq. ft / 47.97 sq. m



Second Floor

COMPLIANT WITH RICS CODE OF MEASURING PRACTICE. Floorplan is for illustrative purposes only and is not to scale. Every attempt has been made to ensure the accuracy of the floorplan shown, however all measurements, fixtures, fittings and data shown are an approximate interpretation for illustrative purposes only. Liability for errors, omissions or mis-statement through negligence or otherwise is hereby excluded.

This floorplan is for illustration purposes only and is not to scale. The position and size of doors, windows, appliances and other features are approximate.



Islington | 0207 354 2480 | islington@winkworth.co.uk



winkworth.co.uk

See things differently

Winkworth wishes to inform prospective buyers and tenants that these particulars are a guide and act as information only. All our details are given in good faith and believed to be correct at the time of printing but they don't form part of an offer or contract. No Winkworth employee has authority to make or give any representation or warranty in relation to this property. All fixtures and fittings, whether fitted or not are deemed removable by the vendor unless stated otherwise and room sizes are measured between internal wall surfaces, including furnishings.