



ST. CHARLES SQUARE, LONDON, W10
£635,000 TO BE ADVISED

A BEAUTIFUL VICTORIAN WELL DESIGNED TWO BEDROOM SECOND FLOOR FLAT

North Kensington | 020 7792 5000 | northkensington@winkworth.co.uk

Winkworth

for every step...

winkworth.co.uk



A stunning second floor flat arranged laterally over one floor in an imposing period house on this tree-lined square in North Kensington.

Featuring sash windows, wooden flooring and an abundance of natural light, the property comprises of two double bedrooms, a large reception room with a separate shaker-style kitchen and modern bathroom.

St. Charles Square is located moments from the amenities of Ladbroke Grove, the shops and excitement of Golborne Road and Portobello Road. The nearest tube station is Ladbroke Grove (Circle and Hammersmith and City) within walking distance, and there are buses taking you all over London within in minutes. EPC rating E.



Winkworth

for every step...

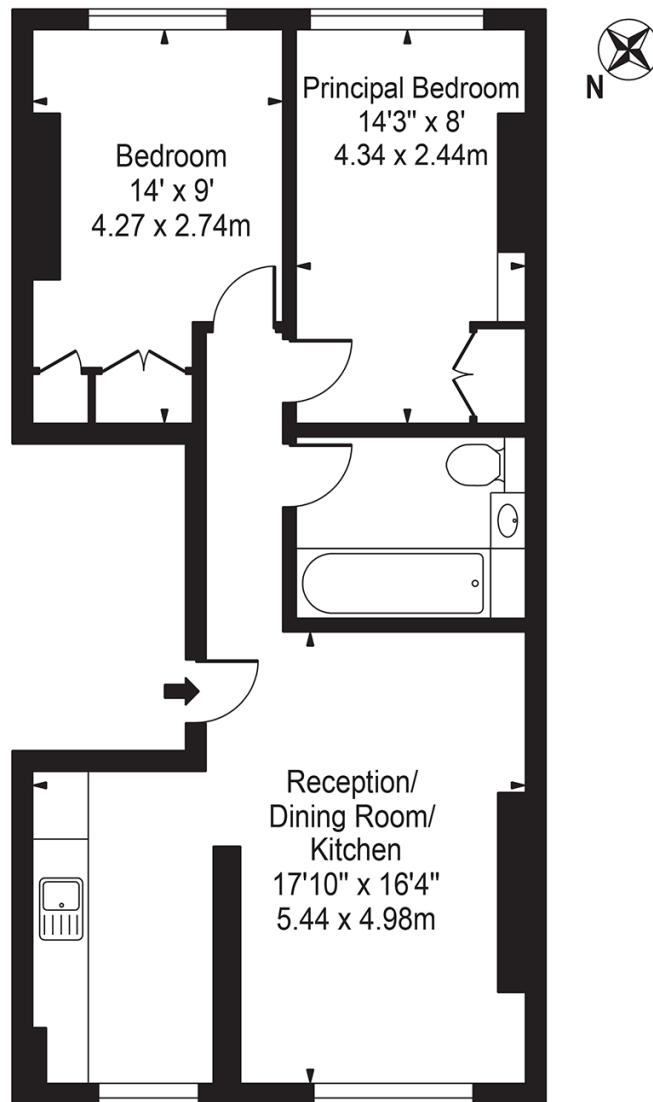


Winkworth
for every step...

winkworth.co.uk

St. Charles Square

Approx. Gross Internal Area 595 Sq Ft - 55.28 Sq M



Second Floor

For Illustration Purposes Only - Not To Scale

This floor plan should be used as a general outline for guidance only and does not constitute in whole or in part an offer or contract. Any intending purchaser or lessee should satisfy themselves by inspection, searches, enquiries and full survey as to the correctness of each statement. Any areas, measurements or distances quoted are approximate and should not be used to value a property or be the basis of any sale or let.

Copyright Morriarti Photography & Design LTD

This floorplan is for illustration purposes only and is not to scale. The position and size of doors, windows, appliances and other features are approximate.

Energy Efficiency Rating		
	Current	Potential
Very energy efficient - lower running costs		
(10-9) A		
(8-101) B		
(69-60) C		77
(55-49) D		
(39-34) E		
(21-25) F	52	
(1-20) G		
Not energy efficient - higher running costs		
England, Scotland & Wales		
EU Directive 2002/91/EC		

North Kensington | 020 7792 5000 | northkensington@winkworth.co.uk

Winkworth

for every step...

winkworth.co.uk

Winkworth wishes to inform prospective buyers and tenants that these particulars are a guide and act as information only. All our details are given in good faith and believed to be correct at the time of printing but they don't form part of an offer or contract. No Winkworth employee has authority to make or give any representation or warranty in relation to this property. All fixtures and fittings, whether fitted or not are deemed removable by the vendor unless stated otherwise and room sizes are measured between internal wall surfaces, including furnishings.