



MILES HOUSE, GREENWICH, LONDON, SE10

GUIDE PRICE £350,000 - £375,000 LEASEHOLD

WE ARE DELIGHTED TO OFFER THIS EXTREMELY WELL PRESENTED TWO BEDROOM FLAT, THAT FEATURES OFF STREET PARKING AND MEASURES CIRCA 673 SQUARE FOOT. LOCATED MOMENTS FROM THE ROYAL PARK!

Greenwich | 02030533033 | greenwich@winkworth.co.uk



DESCRIPTION:

Guide Price £350,000 to £375,000 We are delighted to offer this extremely well presented two bedroom flat, that features off street parking and measures circa 673 square foot. Located moments from the Royal Park!

In very good condition throughout, the property comprises a large 13ft kitchen, a 14ft reception, two double bedrooms and modern bathroom. Added benefits include gas central heating and double glazing. As mentioned there is residents parking to the front of the block.

Tuskar Street is a quiet road and is perfectly located on the cusp of West and East Greenwich, giving it super quick access to the town centre, but also the Royal Park and mainline rail on Maze Hill. DLR and riverboat service, along with the O2 arena are also close by.

AT A GLANCE

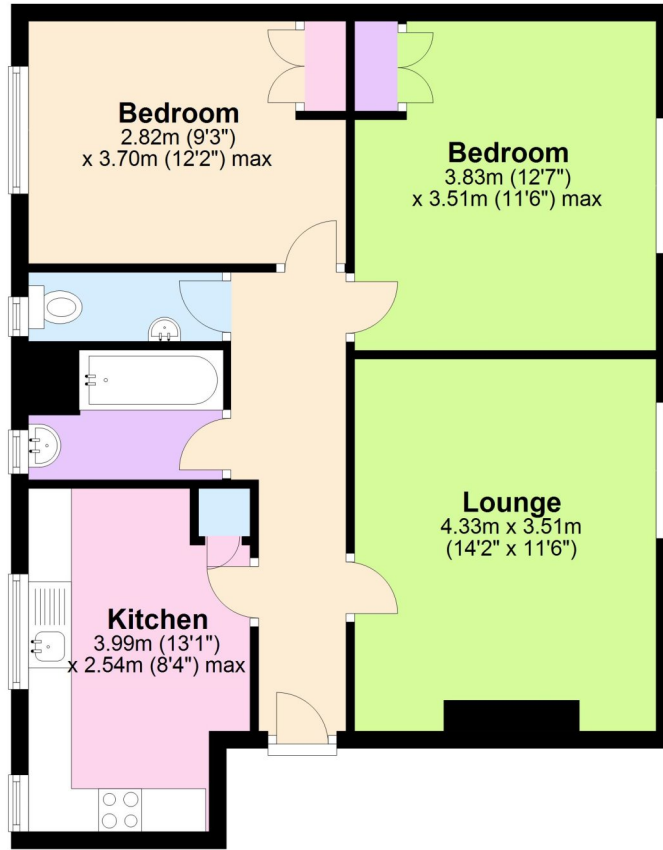
- two bedroom flat
- excellent condition
- 2nd floor
- circa 673 square foot
- double glazing
- off street parking
- quiet road
- moments from Royal Park
- moments from Maze Hill mainline rail





Second Floor

Approx. 62.6 sq. metres (674.1 sq. feet)



Total area: approx. 62.6 sq. metres (674.1 sq. feet)

This floorplan is for illustration purposes only and is not to scale. The position and size of doors, windows, appliances and other features are approximate.

