



56 GROVELANDS PARK, WINNERSH, WOKINGHAM, RG41 5LE
£175,000

Winkworth



GROVELANDS PARK

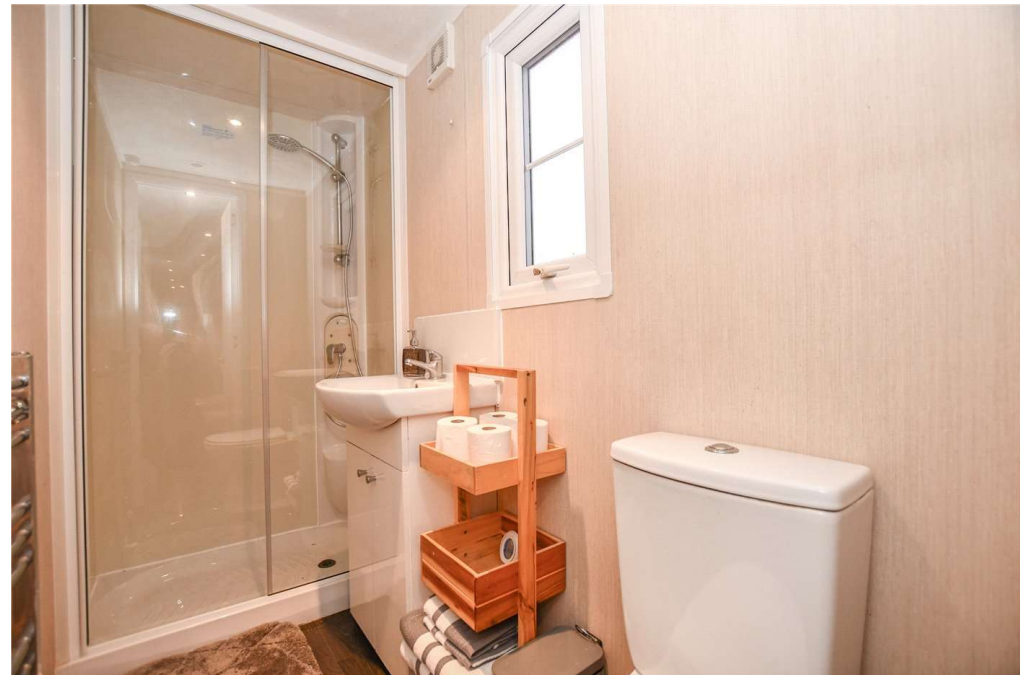
Situated on the pet and family friendly Grovelands Park development, this immaculately presented 2 bedroom park home is only 5 years old and has recently been added to the site by the current owner.

Upon entering the property, you make your way into the hallway which provides a cupboard for shoes and coats. To the front of the property you will find a spacious kitchen/living room, which is rare to find in park homes. The living space has multiple windows overlooking open green areas, which gives the property a light and airy feel. There are also two double bedrooms with built in wardrobes and a shower room, which complete the accommodation.

The home sits on a wonderful plot with enough parking for multiple vehicles and has a good sized garden space with a lawned area, shed and seating area.

EPC: EPC Exempt

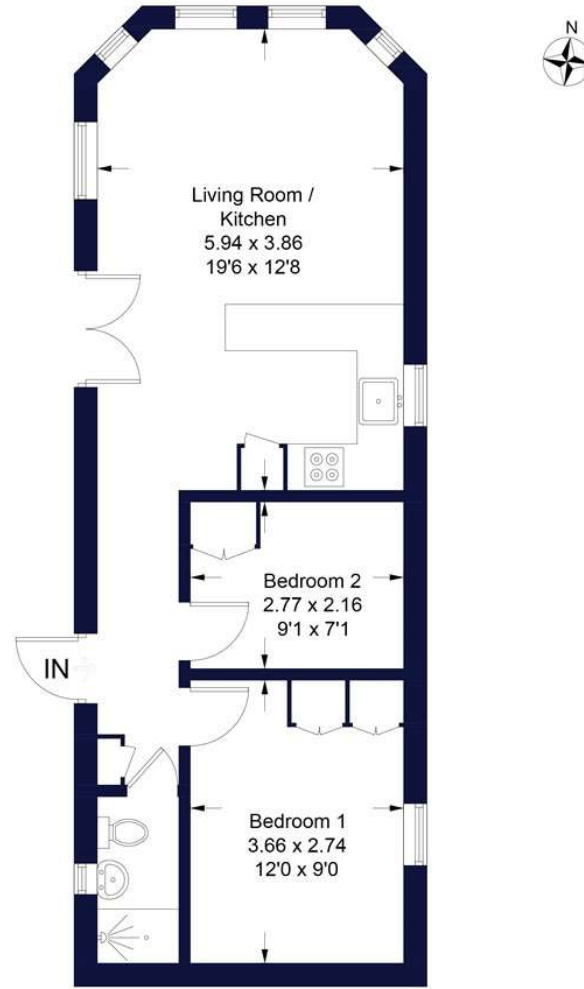




Grovelands Park

Winkworth

Approximate Gross Internal Area Total = 47.5 sq m / 511 sq ft



Ground Floor

Illustration for identification purposes only, measurements are approximate, not to scale. FloorplansUsketch.com © 2023 (ID1023776)

Wokingham | 01189 072777 | wokingham@winkworth.co.uk

Winkworth

Winkworth wishes to inform prospective buyers and tenants that these particulars are a guide and act as information only. All our details are given in good faith and believed to be correct at the time of printing but they don't form part of an offer or contract. No Winkworth employee has authority to make or give any representation or warranty in relation to this property. All fixtures and fittings, whether fitted or not are deemed removable by the vendor unless stated otherwise and room sizes are measured between internal wall surfaces, including furnishings.