



QUEENS DRIVE, LONDON, N4  
£830,000 SHARE OF FREEHOLD

## BEAUTIFUL 2 BEDROOM FLAT WITH A GORGEOUS PRIVATE SOUTH FACING GARDEN

Highbury | 0207 989 7000 | [highbury@winkworth.co.uk](mailto:highbury@winkworth.co.uk)

**Winkworth**



## DESCRIPTION:

This absolutely stunning, two double bedroom plus office room, ground floor period conversion is set on a quiet, no through road in N4. Standing in excess of 900 sqft. Accommodation comprises of a wonderfully bright reception/diner allowing for an excellent entertainment space that flows into the large south facing private garden. The kitchen benefits from ample storage and worktop space as well as a breakfast bar and there is also side access by the house which is incredibly useful. Both bedrooms are good sized doubles, with the master bedroom benefitting from it's own ensuite. There is also small 3rd box room which was initially used as a baby room however this has now been repurposed as an excellent work from home space. The property is completed with a further family bathroom and is offered to the market with a share of freehold.

Queens Drive is perfectly located for the amenities of the prestigious Highbury Barn and Blackstock Road. The green open spaces of Clissold Park, Finsbury Park and the bars and restaurants of the vibrant Stoke Newington Church St are also close by.

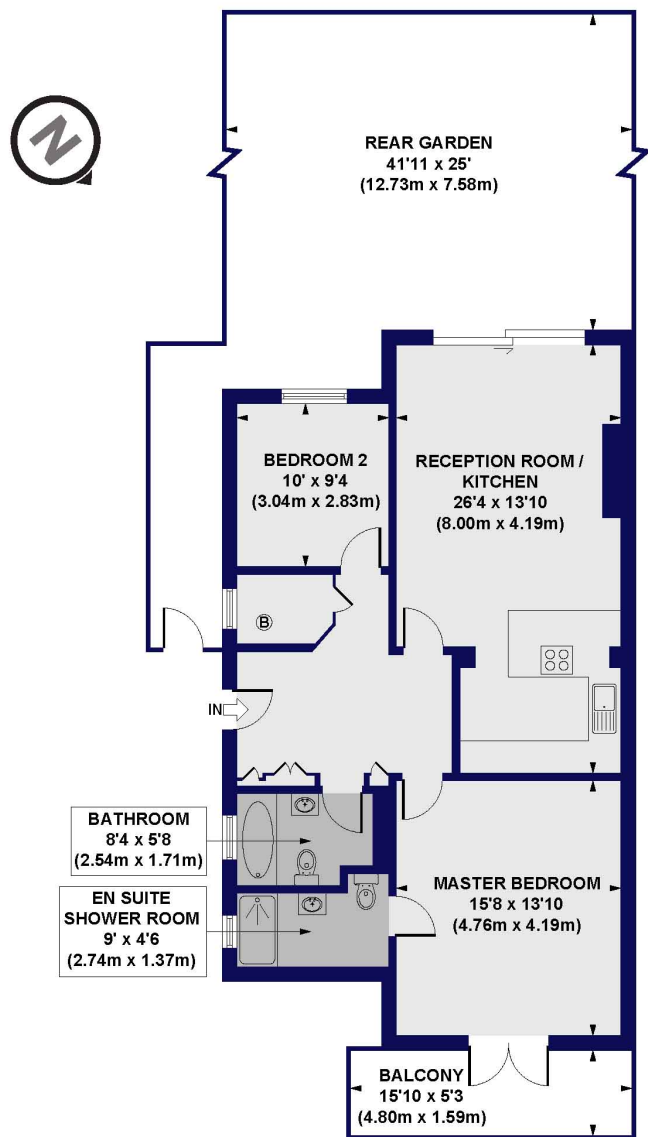
Transport Links are well serviced with Arsenal (Piccadilly Line) and Finsbury Park (Victoria Line) tube stations both a short distance away. There are also great bus links nearby to the property taking into the City and the West End.

**Winkworth**



**Winkworth**

**Queens Drive, N4**  
 Approx. Gross Internal Floor Area 920 sq. ft / 85.44 sq. m

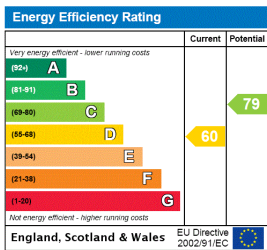


**LOWER GROUND FLOOR**

All measurements of walls, doors, windows, fittings and appliances, including their size and location, are shown as standard sizes and do not constitute any warranty or representation by the seller, their agent or CP Creative. Any intending purchaser must satisfy himself by inspection or otherwise as to the correctness of the information contained in these plans. This plan is for illustrative purposes only and should be used as such by any prospective purchasers.



This floorplan is for illustration purposes only and is not to scale. The position and size of doors, windows, appliances and other features are approximate.



Highbury | 0207 989 7000 | highbury@winkworth.co.uk



winkworth.co.uk

See things differently

Winkworth wishes to inform prospective buyers and tenants that these particulars are a guide and act as information only. All our details are given in good faith and believed to be correct at the time of printing but they don't form part of an offer or contract. No Winkworth employee has authority to make or give any representation or warranty in relation to this property. All fixtures and fittings, whether fitted or not are deemed removable by the vendor unless stated otherwise and room sizes are measured between internal wall surfaces, including furnishings.