



LORDSHIP LANE, EAST DULWICH, LONDON, SE22
£575,000 SHARE OF FREEHOLD

**A STUNNING, GROUND FLOOR GARDEN
 MAISONETTE, SITUATED IN A FANTASTIC
 LOCATION IN SE22.**

Dulwich | 020 8299 2722 | dulwich@winkworth.co.uk

Tenure Share of Freehold | Council Tax Band B – London Borough of Southwark
 | EPC Rating D

winkworth.co.uk

Winkworth

See things differently



DESCRIPTION:

A stunning, ground floor garden maisonette, situated in a fantastic location in SE22. This well-presented ground floor garden maisonette is situated in a prime central East Dulwich location on Lordship Lane. The property is accessed via its own front door, into a spacious entrance hall. A spacious bedroom adorns the front of the property and boasts built in wardrobes, feature fireplace, plantation shutters and finished to a high standard. The shower room is finished to a very high standard with large walk in shower and separate bath. The kitchen is the heart of the property, with fully fitted kitchen, built in appliances and a reception leading out to a shared, sunny, spacious garden. The property benefits from a second bedroom which is currently used as a home office. It is perfectly situated to benefit from easy access to the bars, restaurants, shops and cinema on Lordship Lane and the wide open green spaces of Dulwich Park are just a short walk away. Transport links are provided via either East Dulwich or Denmark Hill station with direct links to London Bridge and the overground. This is a fantastic maisonette in a superb location with early viewing recommended

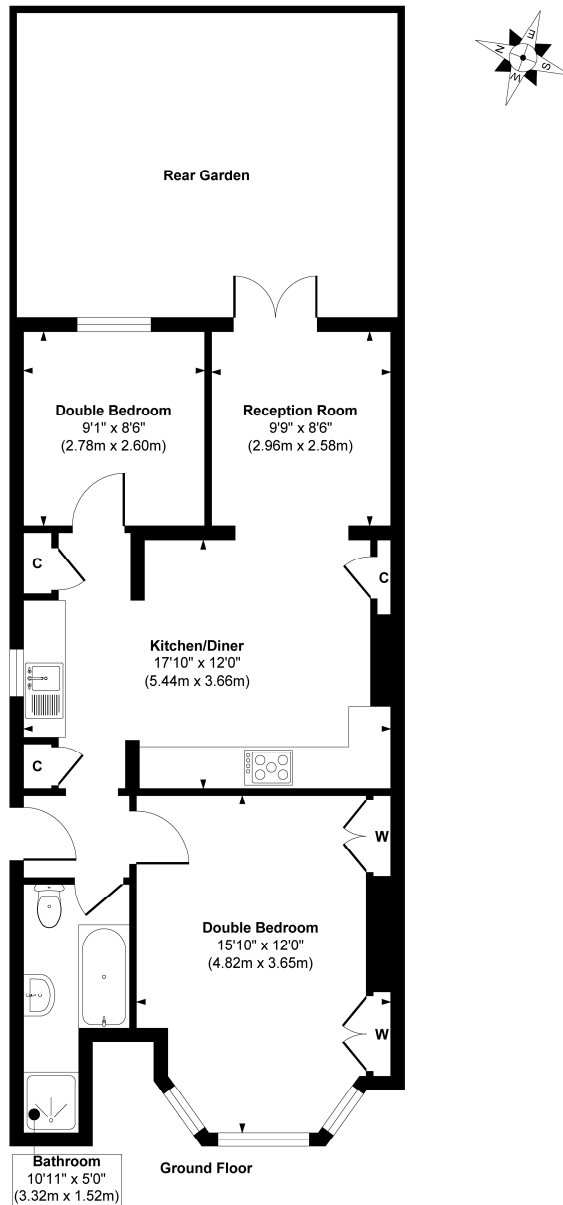
AT A GLANCE

- Two Bedrooms
- Ground Floor Garden
- Maisonette
- Private Section of Garden
- Modern Fully Fitted Kitchen
- Prime East Dulwich Location
- Excellent Transport Links





Lordship Lane

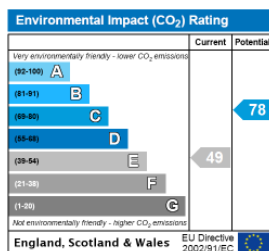
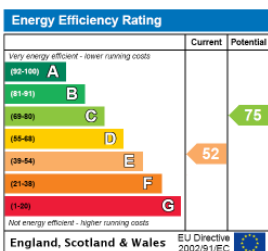


Approx. Gross Internal Floor Area 620 sq. ft / 57.64 sq. m

Illustration for identification purposes only, measurements are approximate, not to scale.

Produced by Elements Property

This floorplan is for illustration purposes only and is not to scale. The position and size of doors, windows, appliances and other features are approximate.



Dulwich | 020 8299 2722 | dulwich@winkworth.co.uk

Winkworth

[winkworth.co.uk](https://www.winkworth.co.uk)

See things differently

Winkworth wishes to inform prospective buyers and tenants that these particulars are a guide and act as information only. All our details are given in good faith and believed to be correct at the time of printing but they don't form part of an offer or contract. No Winkworth employee has authority to make or give any representation or warranty in relation to this property. All fixtures and fittings, whether fitted or not are deemed removable by the vendor unless stated otherwise and room sizes are measured between internal wall surfaces, including furnishings.