

STRATHEDEN ROAD, BLACKHEATH, LONDON, SE3 7TH
£650,000 SHARE OF FREEHOLD

WITH A PRIVATE ENTRANCE AND SPANNING 1,076 SQ. FT IS THIS IMPRESSIVE TWO DOUBLE BEDROOM, TWO BATHROOM, APARTMENT OCCUPYING THE ENTIRE LOWER GROUND FLOOR OF THIS MAGNIFICENT DOUBLE FRONTED DETACHED VICTORIAN HOUSE LOCATED JUST MOMENTS FROM THE HEATH, GREENWICH PARK AND BLACKHEATH STANDARD.

Blackheath | 0208 8520999 | blackheath@winkworth.co.uk

Winkworth

winkworth.co.uk

See things differently



DESCRIPTION:

The property is in excellent decorative order with sash windows, plantation shutters and gas fired central heating.

The accommodation comprises: a large central entrance hall, a huge 24'9 x 14'11 open plan lounge diner with bay window and an attractive modern kitchen with island and breakfast bar. There is a huge 17'0 x 14'10 master bedroom with bay window and stylish modern ensuite shower room, a very large 14'10 x 12'8 second double bedroom and a modern bathroom. There is also a separate utility/laundry room. To the rear is a superb and vast landscape communal garden. The property is sold with a share of the freehold

This is an impressive apartment and is sold chain free. Immediate viewing is essential.

The property is very convenient for transport links with Blackheath train station (0.7 miles) and Westcombe Park station (0.62 miles) nearby and buses stopping for North Greenwich tube station (1.8 miles). Blackheath Common, (100 yards miles), and Royal Greenwich Park (500 metres) are both just a short walk. Blackheath Village with its array of boutiques, restaurants, bars, and farmers market is just a few minutes' walk and the daily conveniences of Blackheath Standard including M&S food hall only 200 yards away.

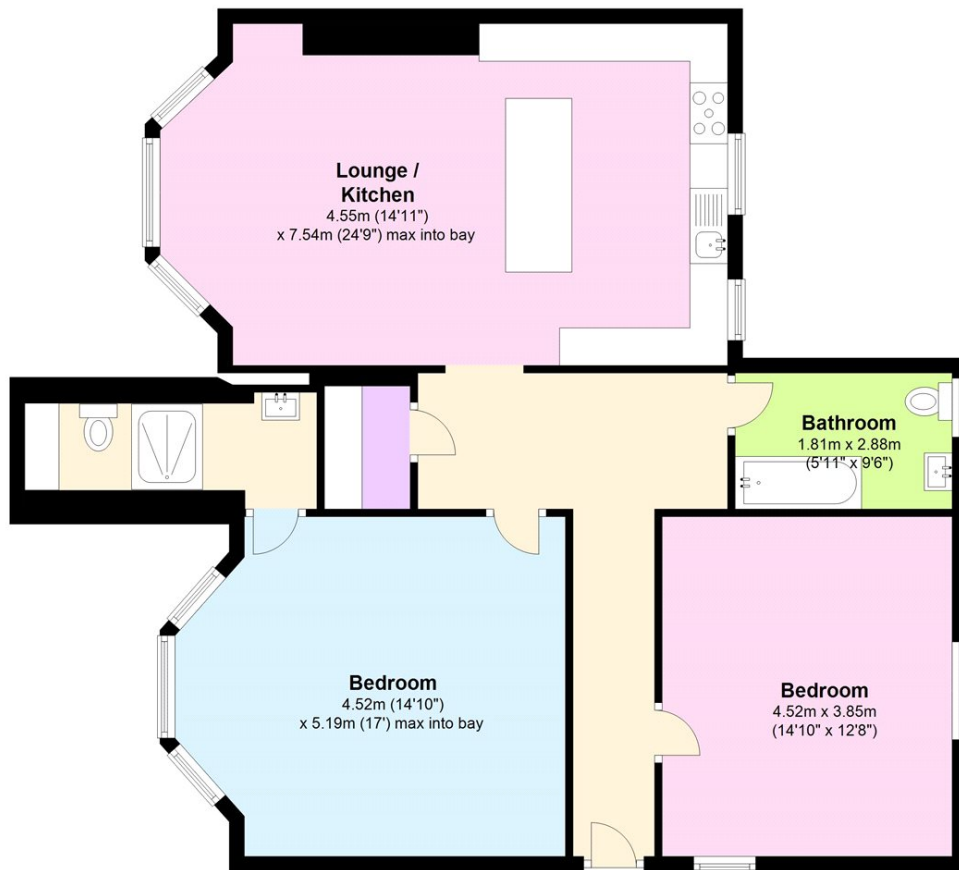
AT A GLANCE

- very large apartment
- period conversion
- two double bedrooms
- two bathrooms
- 1,076 sq.ft
- private entrance
- large communal gardens
- very close to heath
- chain free
- share of freehold



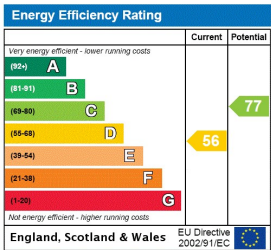


Lowest Ground Floor Approx. 100.0 sq. metres (1076.9 sq. feet)



Total area: approx. 100.0 sq. metres (1076.9 sq. feet)

This floorplan is for illustration purposes only and is not to scale. The position and size of doors, windows, appliances and other features are approximate.



Blackheath | 0208 8520999 | blackheath@winkworth.co.uk



winkworth.co.uk

See things differently

Winkworth wishes to inform prospective buyers and tenants that these particulars are a guide and act as information only. All our details are given in good faith and believed to be correct at the time of printing but they don't form part of an offer or contract. No Winkworth employee has authority to make or give any representation or warranty in relation to this property. All fixtures and fittings, whether fitted or not are deemed removable by the vendor unless stated otherwise and room sizes are measured between internal wall surfaces, including furnishings.