



CHURCH ROAD, SE19

£1,450 PER MONTH UNFURNISHED

WELL PRESENTED ONE BEDROOM FLAT FOR RENT

Crystal Palace | 02038693222 | crystalpalace@winkworth.co.uk

Winkworth

for every step...

[winkworth.co.uk](https://www.winkworth.co.uk)



DESCRIPTION:

Winkworth is pleased to offer this well presented one bedroom flat for rent on Church Road.

Located on the second floor of this purpose built development the property comprises entrance hallway with two great sized storage cupboards, good sized bedroom with fitted wardrobes, modern bathroom suite, reception room with space to dine and separate fitted kitchen.

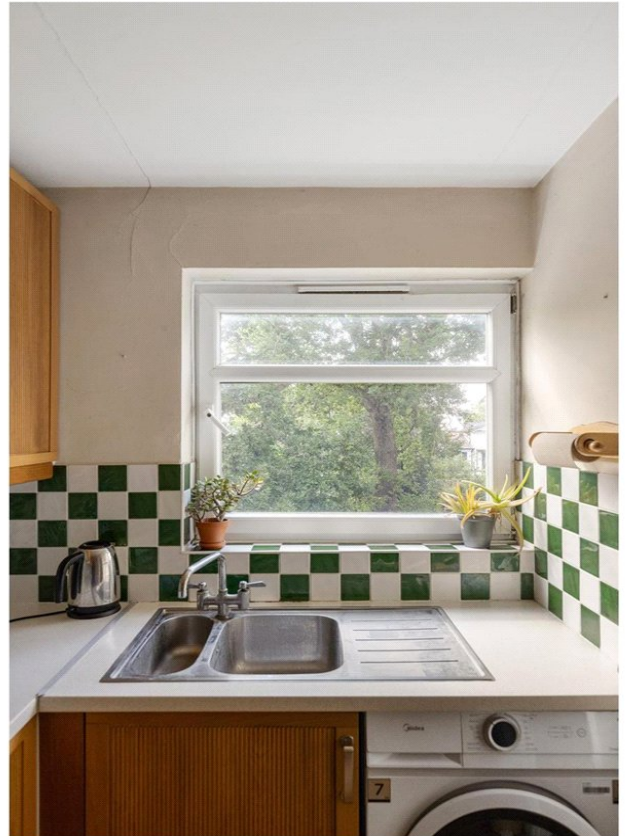
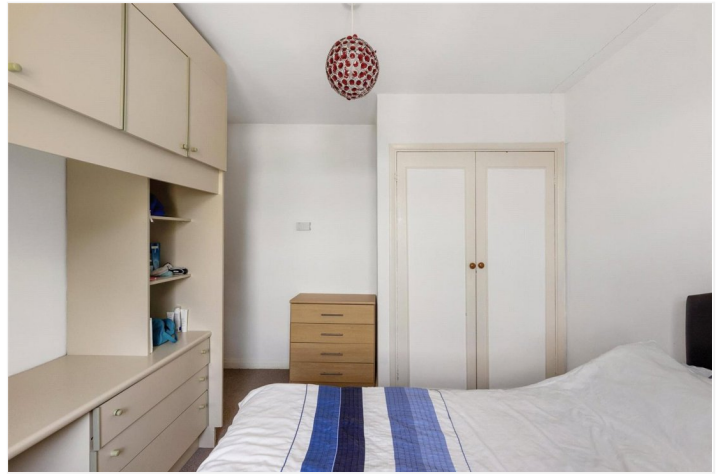
The property is offered unfurnished and is available beginning of September.

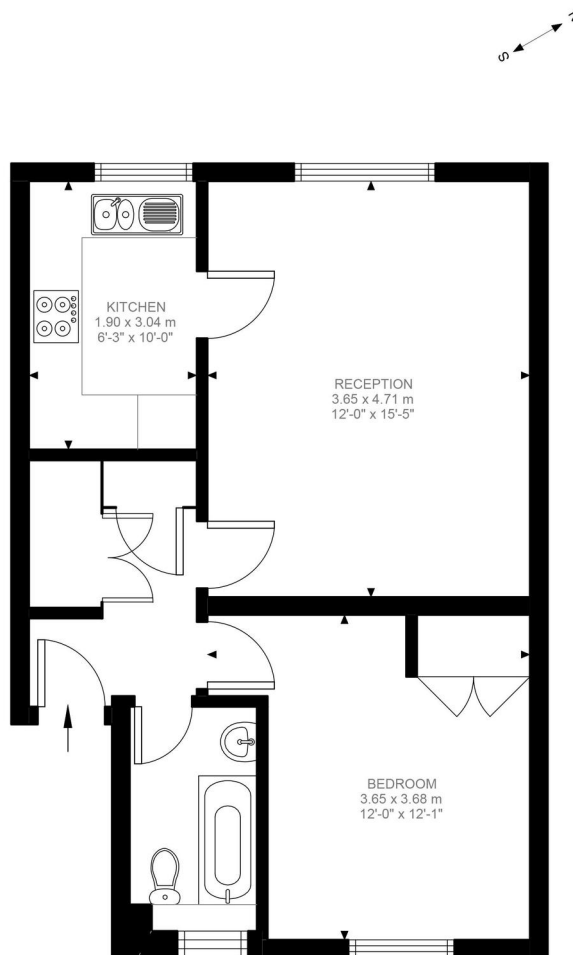
The property is ideally located on Church Road in the heart of Crystal Palace Triangle which offers an abundance of independent shops, cafes, bars & restaurants. Gipsy Hill & Crystal Palace Station are both within easy reach.

AT A GLANCE

- One bedroom
- Second floor flat
- Separate kitchen
- Great internal storage throughout
- Unfurnished
- Available beginning of September
- Holding Deposit: £334.62 (1 weeks rent)







Second Floor
496 ft²

Church Road, SE19
Approximate Gross Internal Area
46.06 SQ.M / 496 SQ.FT

Illustration for identification purposes only. Not to scale.
Floor Plan Drawn According To RICS Guidelines.

This floorplan is for illustration purposes only and is not to scale. The position and size of doors, windows, appliances and other features are approximate.

Score	Energy rating	Current	Potential
92+	A		
81-91	B		
69-80	C		
55-68	D		
39-54	E		
21-38	F		
1-20	G		

Current	Potential
71 C	84 B

Crystal Palace | 02038693222 | crystalpalace@winkworth.co.uk

Winkworth

for every step...

winkworth.co.uk

Winkworth wishes to inform prospective buyers and tenants that these particulars are a guide and act as information only. All our details are given in good faith and believed to be correct at the time of printing but they don't form part of an offer or contract. No Winkworth employee has authority to make or give any representation or warranty in relation to this property. All fixtures and fittings, whether fitted or not are deemed removable by the vendor unless stated otherwise and room sizes are measured between internal wall surfaces, including furnishings.