



RANELAGH GARDENS, SW6

£1,325,000 SHARE OF FREEHOLD

A superb three bedroom, two bathroom flat situated on the 4th floor of this popular mansion block on the river.

Fulham & Parsons Green | 020 7731 3388 | fulham@winkworth.co.uk

Winkworth

for every step...

winkworth.co.uk



DESCRIPTION:

Newly renovated throughout to an exceptional standard, this spacious flat is light and bright. All the rooms have good proportions and come off a large central hallway. There is a well equipped eat in kitchen, three bedrooms with fitted wardrobes, and towards the rear there is a good sized reception room and a dining room, perfect for entertaining. The property spans over 1200 sq. ft. and is being sold with no onward chain.

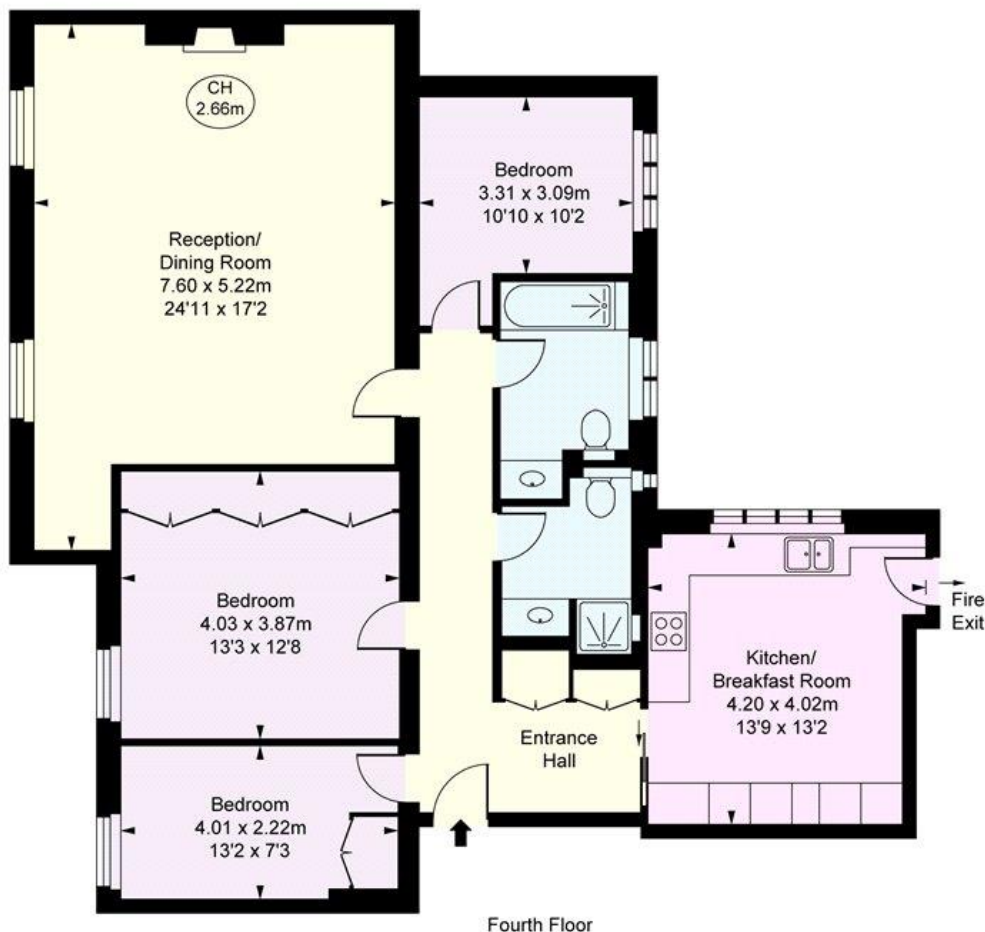
Rivermead Court is an immensely popular 1930's gated mansion block with portage and beautifully maintained communal gardens overlooking the river Thames and moments away from Putney Bridge tube station.





Rivermead Court, SW6
Approximate Gross Internal Area
112.00 sq m / 1,206 sq ft

(CH = Ceiling Heights)



This plan is not to scale. It is for guidance and not for valuation purposes.
All measurements and areas are approximate only, and have been prepared in accordance with the current edition of the RICS Code of Measuring Practice.
© Fulham Performance

This floorplan is for illustration purposes only and is not to scale. The position and size of doors, windows, appliances and other features are approximate.

Tenure: Share of Freehold
Term: Ask agent
Service Charge: Ask agent
Ground Rent: Ask agent
Council Tax Band: G **EPC:** C

Where no figures are shown, we have been unable to ascertain the information. All figures that are shown were correct at the time of printing.

Fulham & Parsons Green | 020 7731 3388 | fulham@winkworth.co.uk

Winkworth

for every step...

winkworth.co.uk

Winkworth wishes to inform prospective buyers and tenants that these particulars are a guide and act as information only. All our details are given in good faith and believed to be correct at the time of printing but they don't form part of an offer or contract. No Winkworth employee has authority to make or give any representation or warranty in relation to this property. All fixtures and fittings, whether fitted or not are deemed removable by the vendor unless stated otherwise and room sizes are measured between internal wall surfaces, including furnishings.