



Development Plot with Planning Permission

Guide Price £400,000





FINCHES LANE, BAYDON, SN8 2JJ

We are delighted to offer for sale this development opportunity in Baydon to convert this former stable block into a wonderful home.

Planning has been granted to convert this former stable block into a substantial home.

The new home will offer three bedrooms, two bathrooms, open plan lounge/dining room kitchen and a study.

The plot size is 0.34 acre / 1369 sq mt.

Planning Application Number: pl202108496

Council Tax Band: NA

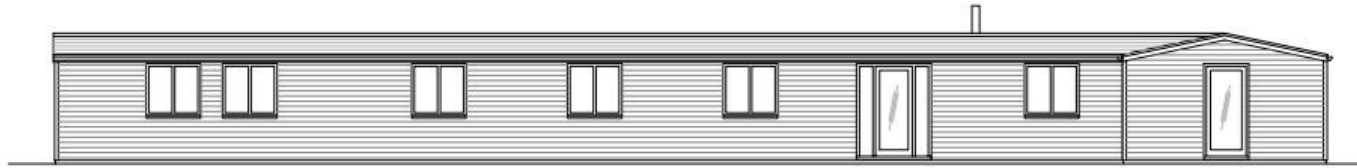
EPC Band: NA



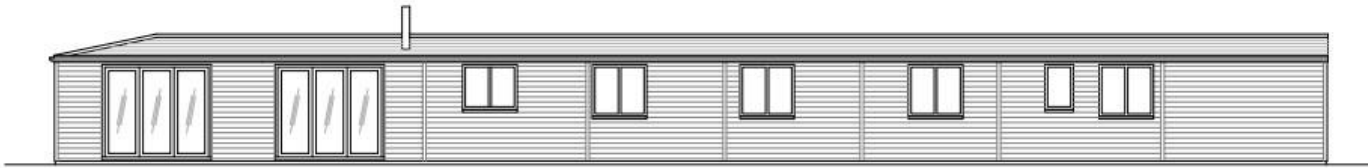
LOCATION

Baydon is a quiet village with an active community and features a shop, pub, primary school and church. The larger villages of Aldbourne and Lambourn offer a range of amenities including a butcher, supermarket and several pubs and restaurants. A little further afield the market towns of Hungerford and Marlborough provide a larger range of shopping and leisure facilities. The property is well placed for road and rail communications with a fast train service from Swindon and Hungerford into London Paddington and good access to the M4 via J14 and J15.

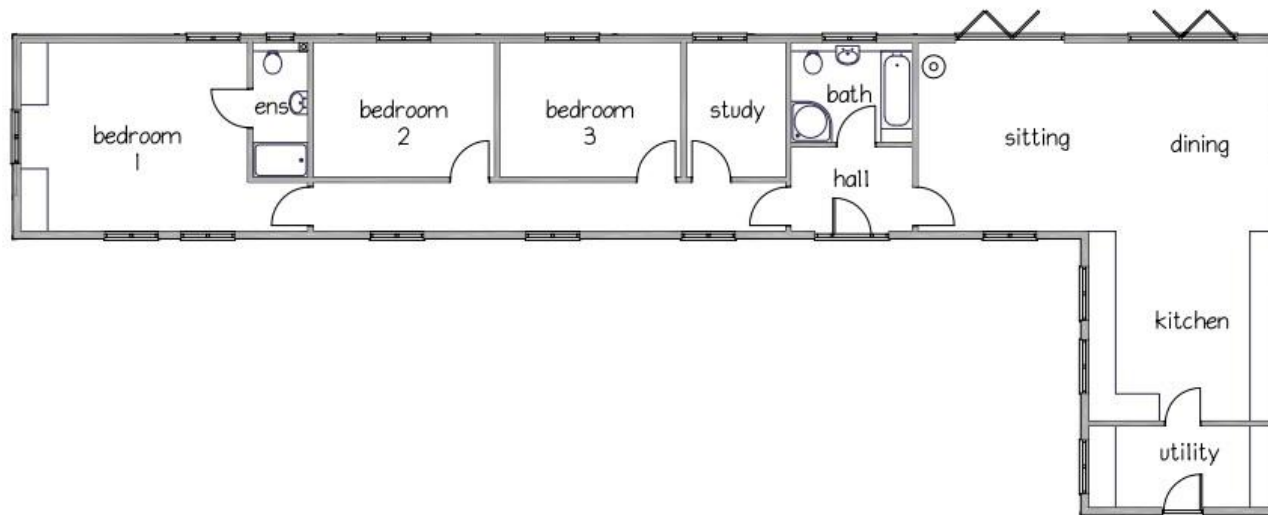




EAST ELEVATION



WEST ELEVATION



Marlborough | 01672 552777 | marlborough@winkworth.co.uk

winkworth.co.uk

Winkworth wishes to inform prospective buyers and tenants that these particulars are a guide and act as information only. All our details are given in good faith and believed to be correct at the time of printing but they don't form part of an offer or contract. No Winkworth employee has authority to make or give any representation or warranty in relation to this property. All fixtures and fittings, whether fitted or not are deemed removable by the vendor unless stated otherwise and room sizes are measured between internal wall surfaces, including furnishings.

