



BLACKSTOCK ROAD, LONDON, N4  
**£635,000 LEASEHOLD**

**A STUNNING THREE BEDROOM APARTMENT  
 JUST MOMENTS FROM THE TUBE.**

Highbury | 0207 989 7000 | [highbury@winkworth.co.uk](mailto:highbury@winkworth.co.uk)

**Winkworth**

*[winkworth.co.uk](http://winkworth.co.uk)*

See things differently





## DESCRIPTION:

This gorgeous maisonette is set across the upper floors of this end of terrace period conversion and stands at over 1000sqft of living space.

On entering the property through your own private entrance, you are welcomed into a wonderful open plan kitchen/dining/living room flooded with natural light thanks to the large sash windows to the front. Further back there is a generous family bathroom whilst the 3 well-proportioned double bedrooms can be found across the 2 floors above.

The property is in excellent condition throughout and is offered on a chain free basis.

Blackstock Road is just a couple of minutes from the prestigious Highbury Barn. The property is close to the highly renowned local amenities, including Godfreys butchers, La Fromagerie, Da Mario's Deli, Bournes Fishmongers and Highbury Vintners. Clissold Park and Highbury Fields are also moments away. The property is fantastically placed for local transport links - with a selection of excellent bus routes, and Finsbury Park (Victoria line) and Arsenal (Piccadilly Line) a short distance away. Highbury & Islington station (Victoria and London Overground lines) is also nearby.

**Winkworth**



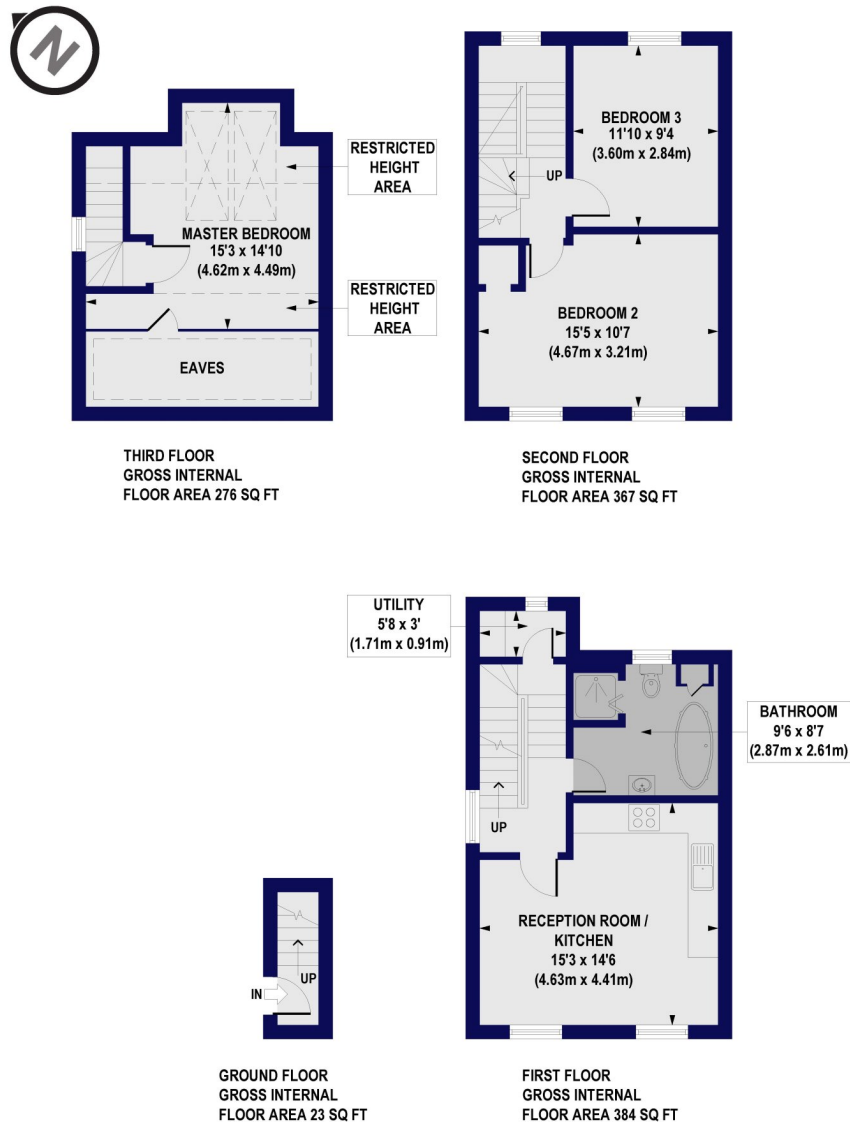


Winkworth

## Blackstock Road, N4

Approx. Gross Internal Floor Area 1050 sq. ft / 97.57 sq. m (Including Restricted Height Area & Eaves)

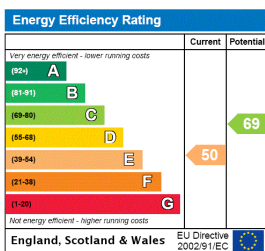
Approx. Gross Internal Floor Area 883 sq. ft / 82.07 sq. m (Excluding Restricted Height Area & Eaves)



All measurements of walls, doors, windows, fittings and appliances, including their size and location, are shown as standard sizes and do not constitute any warranty or representation by the seller, their agent or CP Creative. Any intending purchaser must satisfy himself by inspection or otherwise as to the correctness of the information contained in these plans. This plan is for illustrative purposes only and should be used as such by any prospective purchasers.

**Winkworth**

This floorplan is for illustration purposes only and is not to scale. The position and size of doors, windows, appliances and other features are approximate.



Highbury | 0207 989 7000 | highbury@winkworth.co.uk

**Winkworth**

*winkworth.co.uk*

See things differently

Winkworth wishes to inform prospective buyers and tenants that these particulars are a guide and act as information only. All our details are given in good faith and believed to be correct at the time of printing but they don't form part of an offer or contract. No Winkworth employee has authority to make or give any representation or warranty in relation to this property. All fixtures and fittings, whether fitted or not are deemed removable by the vendor unless stated otherwise and room sizes are measured between internal wall surfaces, including furnishings.