



PARK AVENUE, NW2

£2,000 PER MONTH PART FURNISHED

**CONTEMPORARY ONE BEDROOM TOP FLOOR
FLAT SITUATED IN POPULAR TREE LINED ROAD.**

Kensal Rise & Queens Park | 0208 960 4947 | kensalrise@winkworth.co.uk

Winkworth

for every step...

winkworth.co.uk



DESCRIPTION:

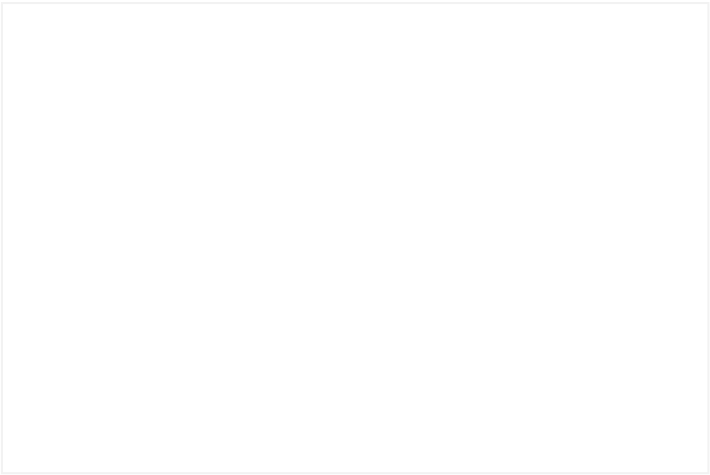
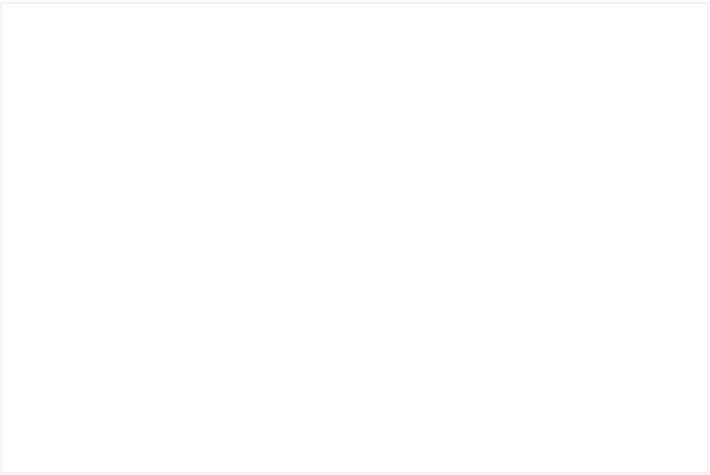
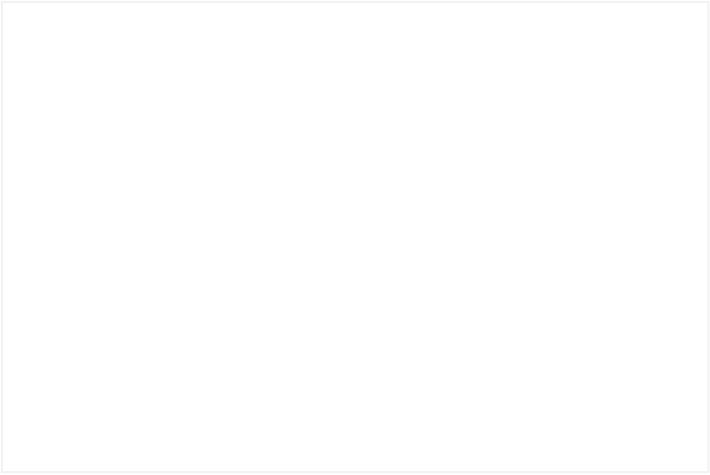
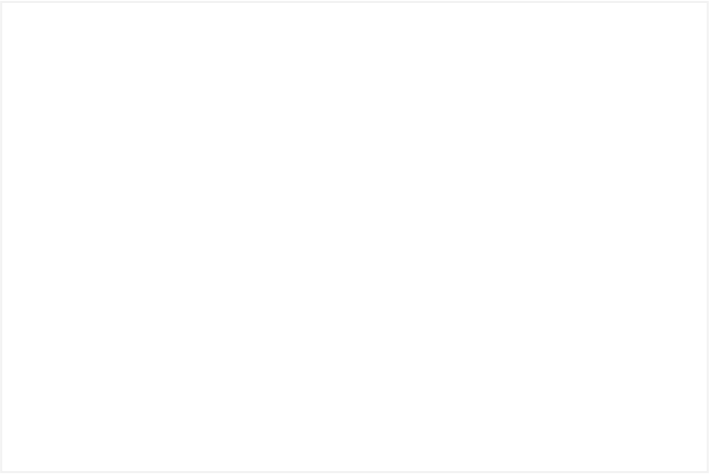
Modern, stylish and contemporary living in a stunning top floor flat.

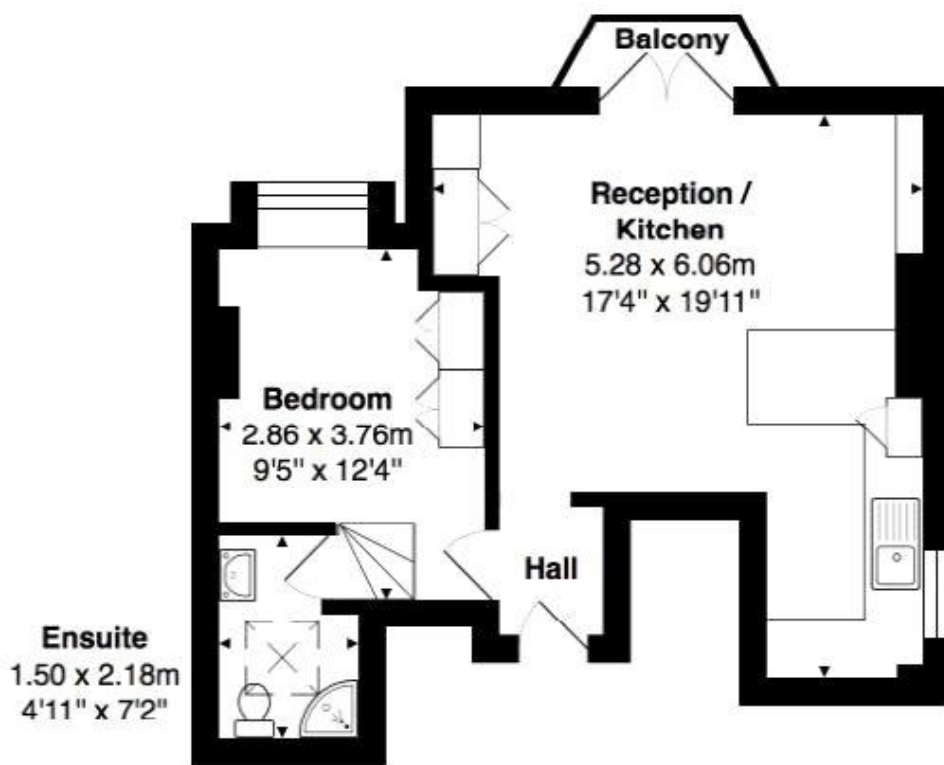
Situated in a prime residential road in Willesden Green located moments from Willesden Green tube and High Road.

Comprising: hallway, open plan living room and fully equipped and integrated kitchen, double bedroom leading to raised shower room.

Offering modern open plan living providing a great space and architecturally designed room with added storage hidden solutions.

Council Tax Band - D



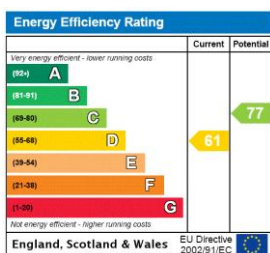


Top Floor

Total Area: 39.5 m² ... 425 ft² (excluding balcony)

All measurements are approximate and for display purposes only

This floorplan is for illustration purposes only and is not to scale. The position and size of doors, windows, appliances and other features are approximate.



Deposit: 5 weeks rent

Holding Deposit: 1 weeks rent

Council Tax Band: D

Where no figures are shown, we have been unable to ascertain the information. All figures that are shown were correct at the time of printing.

Kensal Rise & Queens Park | 0208 960 4947 | kensalrise@winkworth.co.uk

Winkworth

for every step...

winkworth.co.uk

Winkworth wishes to inform prospective buyers and tenants that these particulars are a guide and act as information only. All our details are given in good faith and believed to be correct at the time of printing but they don't form part of an offer or contract. No Winkworth employee has authority to make or give any representation or warranty in relation to this property. All fixtures and fittings, whether fitted or not are deemed removable by the vendor unless stated otherwise and room sizes are measured between internal wall surfaces, including furnishings.