



GARTON PLACE, SW18
OFFERS OVER £400,000 LEASEHOLD

Winkworth



GARTON PLACE, SW18

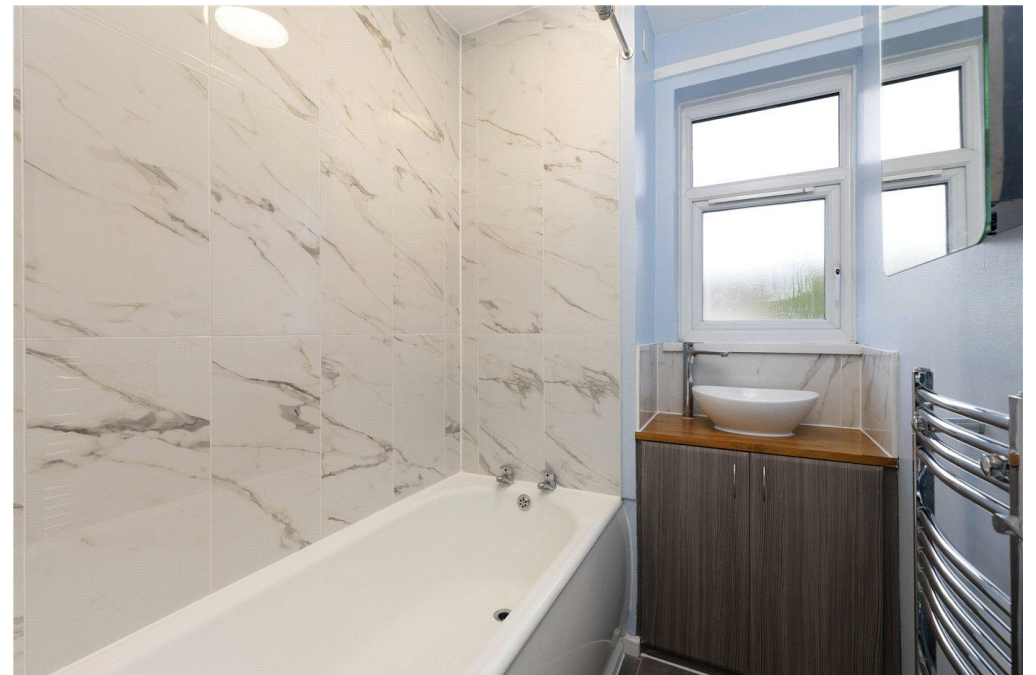
A well-presented 764 sq. ft. two-bedroom apartment located on the first floor of a purpose-built development in the heart of Wandsworth. The property comprises two bedrooms, a spacious reception room, a modern bathroom, separate WC, and a contemporary kitchen, all finished in good decorative order.

Residents benefit from a well-maintained communal garden, offering a peaceful green space for relaxation and outdoor enjoyment—an ideal addition to city living. The development also includes residents' parking and secure entry.

Located moments from Southside Shopping Centre, the apartment is perfectly placed for a wide range of amenities including shops, restaurants, cafés, gyms, and a large Sainsbury's. King George's Park is just a short stroll away, providing tennis courts, open green spaces, and leisure facilities. Excellent bus routes and nearby transport links offer convenient access to Central London and surrounding areas.

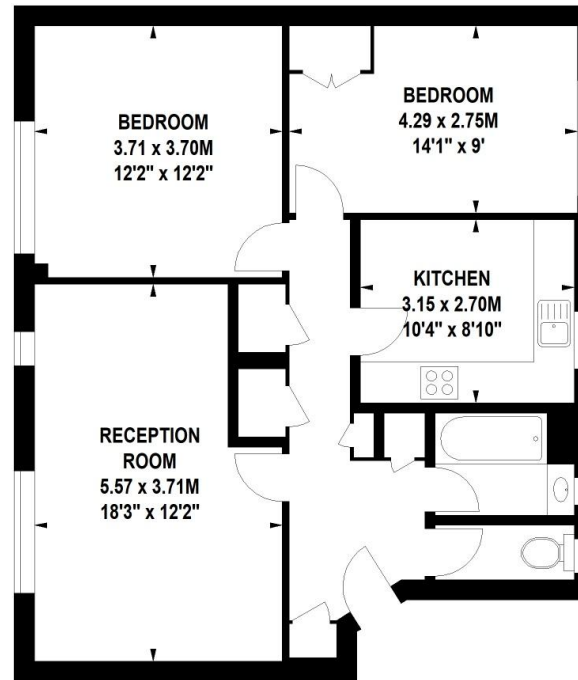
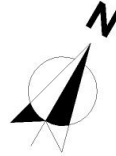
Offered as a leasehold, this is a fantastic opportunity for first-time buyers, investors, or anyone seeking a well-connected home in a vibrant South West London location.





Swanmore Court, Garton Place, SW18

Approximate Gross Internal Area 71 sq.m / 764 sq. ft



First Floor

Floor Plan produced for WINKWORTH by Mays Floorplans © . Tel 020 3397 4594
Illustration for identification purposes only, not to scale
All measurements are maximum, and include wardrobes and window bays where applicable

Score	Energy rating	Current	Potential
92+	A		
81-91	B		
69-80	C	75 C	80 C
55-68	D		
39-54	E		
21-38	F		
1-20	G		

Southfields | 020 8877 1000 | southfields@winkworth.co.uk

winkworth.co.uk

Winkworth wishes to inform prospective buyers and tenants that these particulars are a guide and act as information only. All our details are given in good faith and believed to be correct at the time of printing but they don't form part of an offer or contract. No Winkworth employee has authority to make or give any representation or warranty in relation to this property. All fixtures and fittings, whether fitted or not are deemed removable by the vendor unless stated otherwise and room sizes are measured between internal wall surfaces, including furnishings.

Winkworth