



MERTON ROAD, SW18
£1,750 PER MONTH UNFURNISHED

Winkworth



MERTON ROAD, SW18

A well-presented one bedroom apartment set within Pine Court, a popular gated development on Merton Road, offering communal gardens and off-street parking.

The property is located on the first floor and provides well-balanced accommodation extending to approximately 398 sq ft. The accommodation comprises a bright open-plan kitchen / reception room, with wood flooring and space for both living and dining, a modern fitted kitchen with integrated appliances, a double bedroom with built-in storage, and a contemporary bathroom suite.

Pine Court is ideally positioned for easy access to Wandsworth, Wandsworth Town mainline station, Southside Shopping Centre, and East Putney Underground Station (District Line). The open green spaces of King George's Park are also close by, along with a wide selection of shops, cafés, restaurants and local amenities.

Pine Court is a well-maintained development set back from the road, benefiting from attractive communal gardens, gated access, and off-street parking for residents.

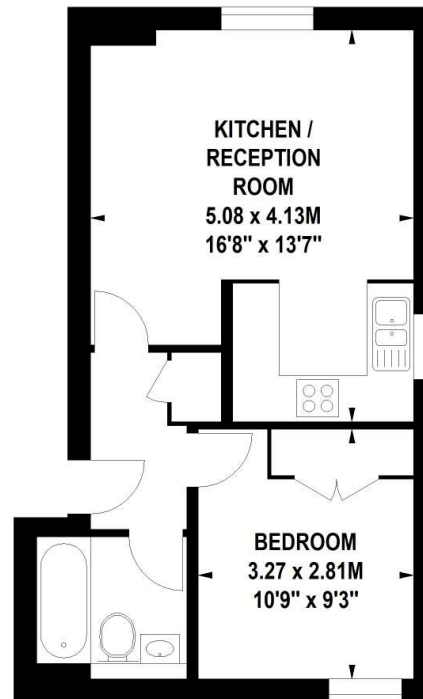
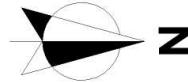
Pine Court is ideally positioned on Merton Road, just moments from the excellent transport links of Southfields and East Putney Underground Stations (District Line). The area also benefits from a wealth of local amenities, cafes, restaurants, and green open spaces such as King George's Park.





Pine Court, Merton Road, SW18

Approximate Gross Internal Area 37 sq.m / 398 sq. ft



First Floor

Floor Plan produced for WINKWORTH by Mays Floorplans © . Tel 020 3397 4594

Illustration for identification purposes only, not to scale

All measurements are maximum, and include wardrobes and window bays where applicable

Southfields | 020 8877 1000 | southfields@winkworth.co.uk

winkworth.co.uk

Winkworth wishes to inform prospective buyers and tenants that these particulars are a guide and act as information only. All our details are given in good faith and believed to be correct at the time of printing but they don't form part of an offer or contract. No Winkworth employee has authority to make or give any representation or warranty in relation to this property. All fixtures and fittings, whether fitted or not are deemed removable by the vendor unless stated otherwise and room sizes are measured between internal wall surfaces, including furnishings.

Winkworth