



RANELAGH GARDENS, SW6 £800,000 TO BE ADVISED

A rarely available, three double bedroom lateral flat in the ever-popular block, Napier Court, in need of modernisation.

Fulham & Parsons Green | 020 7731 3388 | fulham@winkworth.co.uk 40
New King's Road, Fulham, London, SW6 4ST

Winkworth

for every step...

winkworth.co.uk



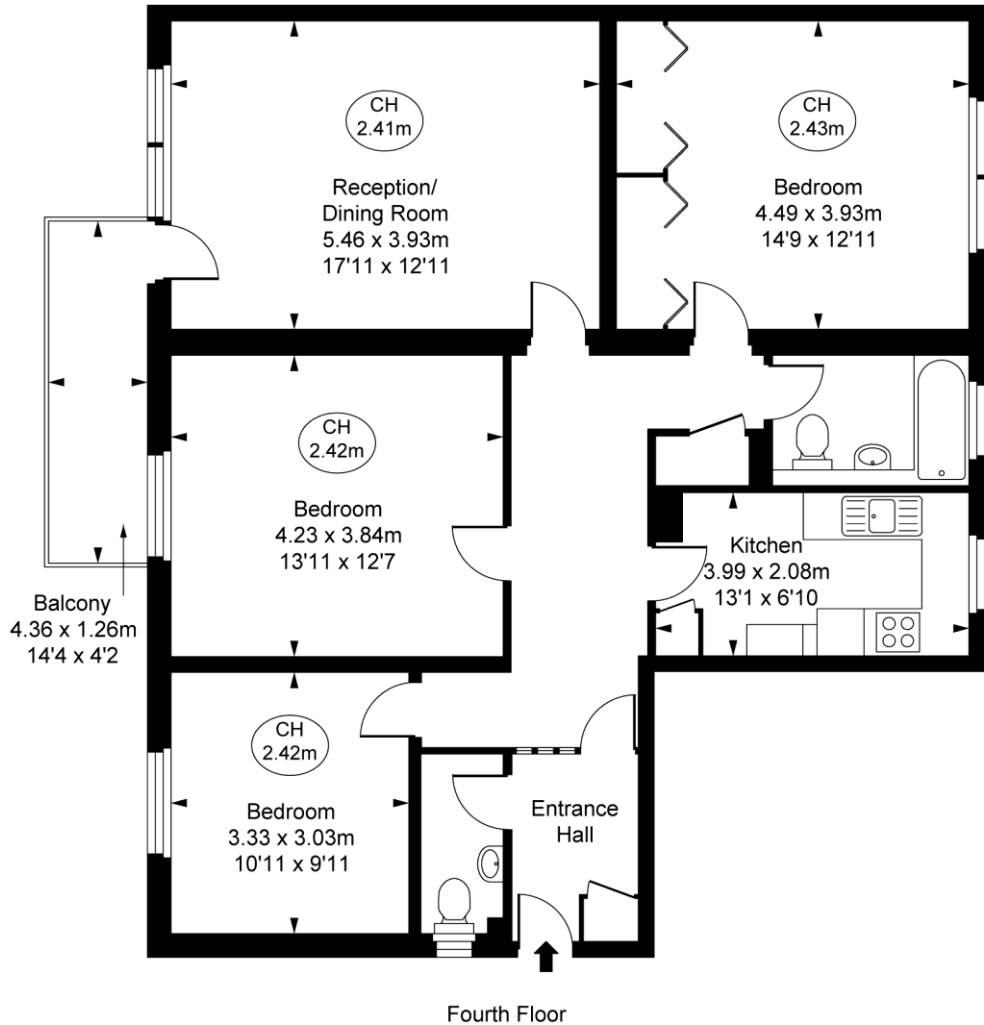
SUMMARY:

The flat is situated on the fourth floor in the highly sought-after location of the block with views toward the Hurlingham Club from the kitchen and main bedroom, and over the beautifully maintained communal gardens from the reception room and private balcony. The flat has three double bedrooms with one having the advantage of built in storage. There is a good sized family bathroom and a further cloakroom room. The flat has a separate kitchen with ample storage and a bright spacious reception room which leads on to a balcony with plenty of space for a table and two chairs. Benefitting from a porter, a lift and on street parking, this flat is being sold chain free.

Napier Court is a very desirable purpose-built block located within immediate proximity to the River Thames, Hurlingham Club and Putney Bridge tube station. There is an array of local shops and amenities nearby and the property is very well linked to Central and South London by both bus services and the district line tube.



Napier Court,
Ranelagh Gardens, SW6
Approximate Gross Internal Area
103.42 sq m / 1,113 sq ft
(CH = Ceiling Heights)



This plan is not to scale. It is for guidance and not for valuation purposes.
All measurements and areas are approximate only, and have been prepared in accordance with the current edition of the RICS Code of Measuring Practice.
© Fulham Performance

This floorplan is for illustration purposes only and is not to scale. The position and size of doors, windows, appliances and other features are approximate.

Tenure: To be advised
Term: Expires -
Service Charge: £0 per annum
Ground Rent: £ 0 Annually (subject to increase)
Council Tax Band:
Where no figures are shown, we have been unable to ascertain the information. All figures that are shown were correct at the time of printing.

Fulham & Parsons Green | 020 7731 3388 | fulham@winkworth.co.uk
40 New King's Road, Fulham, London, SW6 4ST

Winkworth

for every step...

winkworth.co.uk

Winkworth wishes to inform prospective buyers and tenants that these particulars are a guide and act as information only. All our details are given in good faith and believed to be correct at the time of printing but they don't form part of an offer or contract. No Winkworth employee has authority to make or give any representation or warranty in relation to this property. All fixtures and fittings, whether fitted or not are deemed removable by the vendor unless stated otherwise and room sizes are measured between internal wall surfaces, including furnishings.