



LEIGH COURT, LONDON, SE19
£1,750 PER MONTH PART FURNISHED

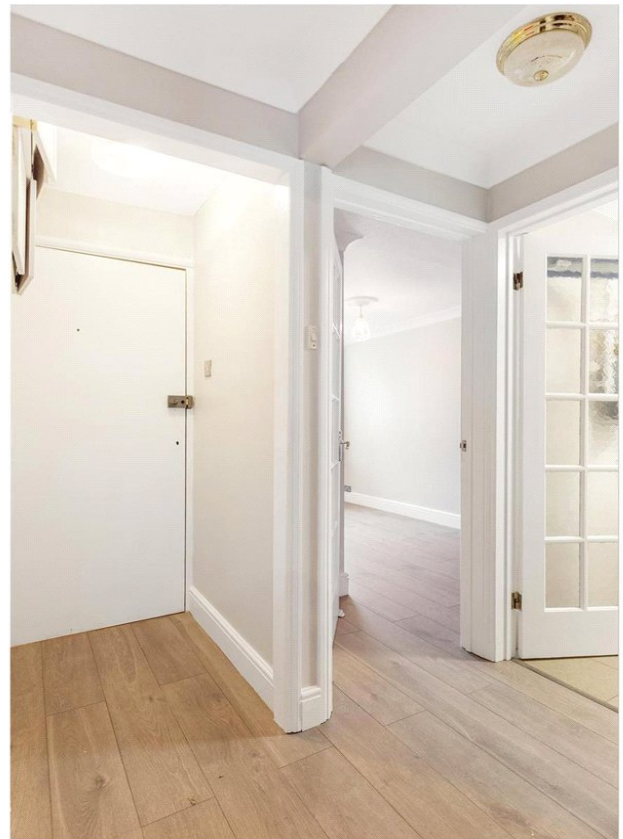
WELL PRESENTED TWO BEDROOM FLAT FOR RENT

Crystal Palace | 02038693222 | crystalpalace@winkworth.co.uk

Winkworth

for every step...

winkworth.co.uk



DESCRIPTION:

A modern two bedroom flat located on the ground floor of this purpose-built development in Crystal Palace.

The property comprises entrance hallway, reception with dual aspect windows allowing for an abundance of natural light. Separate modern kitchen, good sized double bedroom, second, smaller double bedroom & full bathroom.

The property has just been completely repainted throughout, including new floors and bathroom suite, is offered part-furnished & available now.

Located a short distance from Gipsy Hill station and the popular Crystal Palace Triangle, with a wealth of boutiques, bars, restaurants, and independent shops.

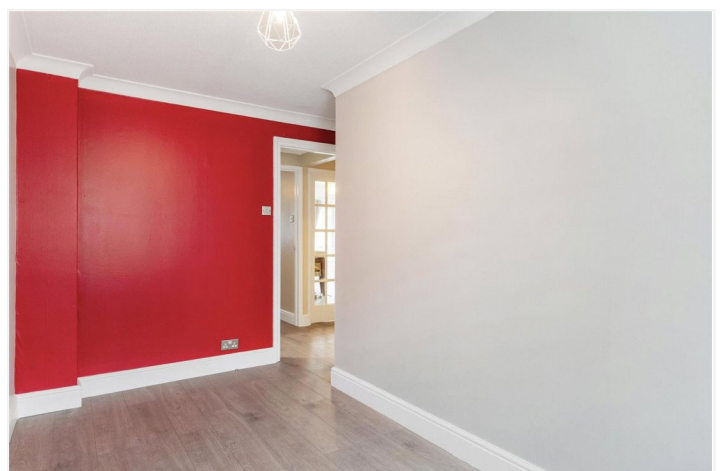
Rent: £1,750pm

Holding Deposit: £403.84 (1 weeks rent)

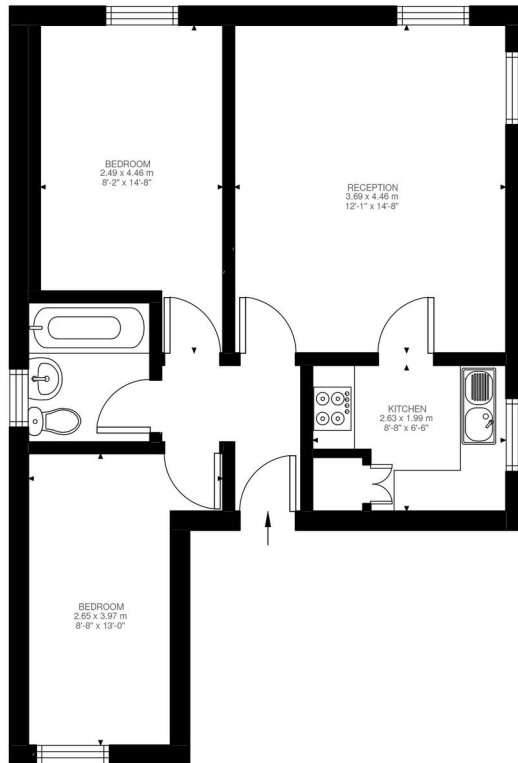
Deposit: £2,019.23 (5 weeks rent)

AT A GLANCE

- Two bedrooms
- Ground floor flat
- Separate kitchen
- Full bathroom
- Part-furnished
- Close to Crystal Palace Triangle & Gipsy Hill Station
- Available now







Ground Floor
535 ft²

High View Road, SE19
Approximate Gross Internal Area
49.75 SQ.M / 535 SQ.FT

Illustration for identification purposes only. Not to scale.
Floor Plan Drawn According To RICS Guidelines.

This floorplan is for illustration purposes only and is not to scale. The position and size of doors, windows, appliances and other features are approximate.

Score	Energy rating	Current	Potential
92+	A		
81-91	B		
69-80	C		76 C
55-68	D	60 D	
39-54	E		
21-38	F		
1-20	G		

Crystal Palace | 02038693222 | crystalpalace@winkworth.co.uk

Winkworth

for every step...

[winkworth.co.uk](https://www.winkworth.co.uk)

Winkworth wishes to inform prospective buyers and tenants that these particulars are a guide and act as information only. All our details are given in good faith and believed to be correct at the time of printing but they don't form part of an offer or contract. No Winkworth employee has authority to make or give any representation or warranty in relation to this property. All fixtures and fittings, whether fitted or not are deemed removable by the vendor unless stated otherwise and room sizes are measured between internal wall surfaces, including furnishings.