



AUBERT ROAD, Highbury, N5
£500 PER WEEK UNFURNISHED

A TWO BEDROOM SPLIT LEVEL FLAT ON THE SECOND AND THIRD FLOORS OF A BEAUTIFUL PERIOD CONVERSION.

Islington | 0207 354 2480 | islington@winkworth.co.uk

Tenant Fees Apply: Details of fees for tenant referencing, tenancy agreement admin fees and renewal fees are available on the Winkworth website and the link can be found with the displayed rent for the property. Tenants should ensure they are fully conversant with these upfront fees and other costs that are involved at the outset of the tenancy before making an offer to rent and your local Winkworth office will provide written details upon request.

winkworth.co.uk

Winkworth

See things differently



DESCRIPTION:

A two bedroom split level flat on the second and third floors of a beautiful period conversion. The property has a separate fitted kitchen and the reception room has space for a dining table. Both bedrooms are good sized doubles and the property boasts a large roof terrace as well. Aubert Road is a beautiful row of terraced Victorian properties and is only short walking distance to Arsenal Underground Station, Drayton Park Rail Station, Highbury Barn and Highbury Fields.

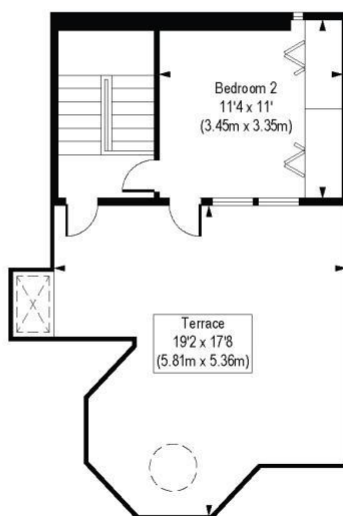
Winkworth



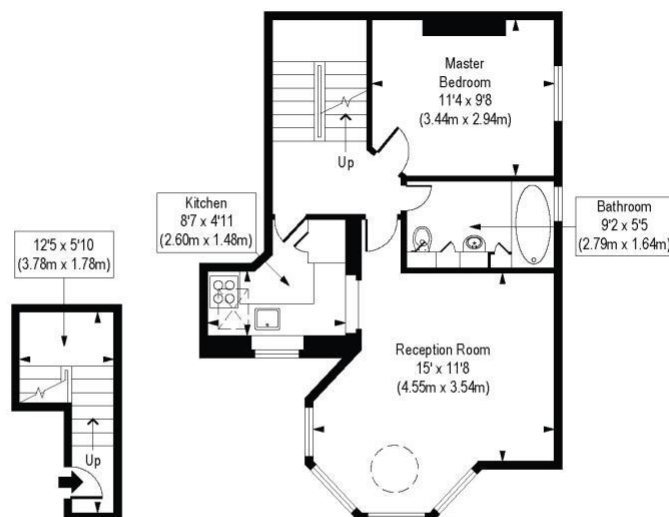
Winkworth

Aubert Road, N5

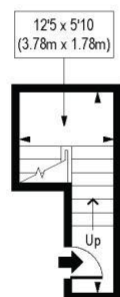
Approx. Gross Internal Floor Area 731 sq. ft / 67.93 sq. m



Third Floor
Gross Internal
Floor Area 184 sq ft



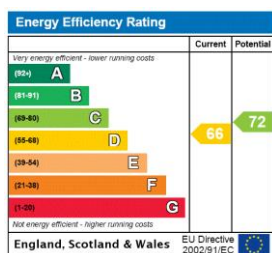
Second Floor
Gross Internal
Floor Area 497 sq ft



First Floor
Gross Internal
Floor Area 50 sq ft

COMPLIANT WITH RICS CODE OF MEASURING PRACTICE Floorplan is for illustrative purposes only and is not to scale. Every attempt has been made to ensure the accuracy of the floorplan shown, however all measurements, fixtures, fittings and data shown are an approximate interpretation for illustrative purposes only. Liability for errors, omissions or mis-statement through negligence or otherwise is hereby excluded.

This floorplan is for illustration purposes only and is not to scale. The position and size of doors, windows, appliances and other features are approximate.



Islington | 0207 354 2480 | islington@winkworth.co.uk

Winkworth

winkworth.co.uk

See things differently

Winkworth wishes to inform prospective buyers and tenants that these particulars are a guide and act as information only. All our details are given in good faith and believed to be correct at the time of printing but they don't form part of an offer or contract. No Winkworth employee has authority to make or give any representation or warranty in relation to this property. All fixtures and fittings, whether fitted or not are deemed removable by the vendor unless stated otherwise and room sizes are measured between internal wall surfaces, including furnishings.