

Roffo Court, Boyson Road, London, SE17

£399,950 To be advised

A fantastic opportunity to acquire this stunning and spacious one-bedroom flat, with a large private garden, located in a wonderful purpose-built block, ideally located in Walworth.

LOCATION

You will find the property on Boysdon Road. A perfect location to access all local amenities the area has to offer, such as the bustling high street of Camberwell Road, and Burgess Park which is just around the corner.

DESCRIPTION

Entering the property through the private front door, the wide hallway welcomes you in and you are greeted by charming engineered wooden flooring.

The bathroom is to your right: tiled throughout and finished well. The bathroom houses a bath and overhead shower, large mirror, sink and W.C.

Continuing to the end of the hallway, ahead of you is the generously sized bedroom. The bedroom has more than enough space for a king-sized bed with additional space reserved for freestanding storage. Large windows keep the space bright, with the added benefit of direct access offered to the private garden to the rear.

Back into the hallway and through to the wonderful open plan kitchen/living space. The kitchen is finished to a high spec and is equipped with all the latest mod cons. There is great counter space and storage options, as well as built in areas for utilities.

The living space is a fantastic size and perfect for a large sofa, dining table and any other furniture you wish to add. A floor to ceiling window, allows light to flood through from the rear. You again have access to the garden.

The South-east facing garden is an excellent size and a flexible space. A wonderful, quiet area to enjoy the warmer months, perfect for entertaining.

LOCAL AUTHORITY

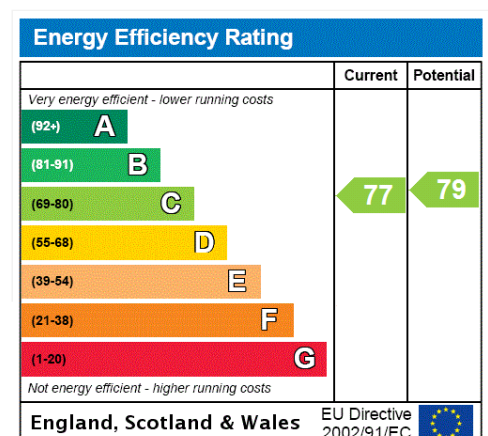
Southwark Council, London

TENURE

To be advised

DIRECTIONS

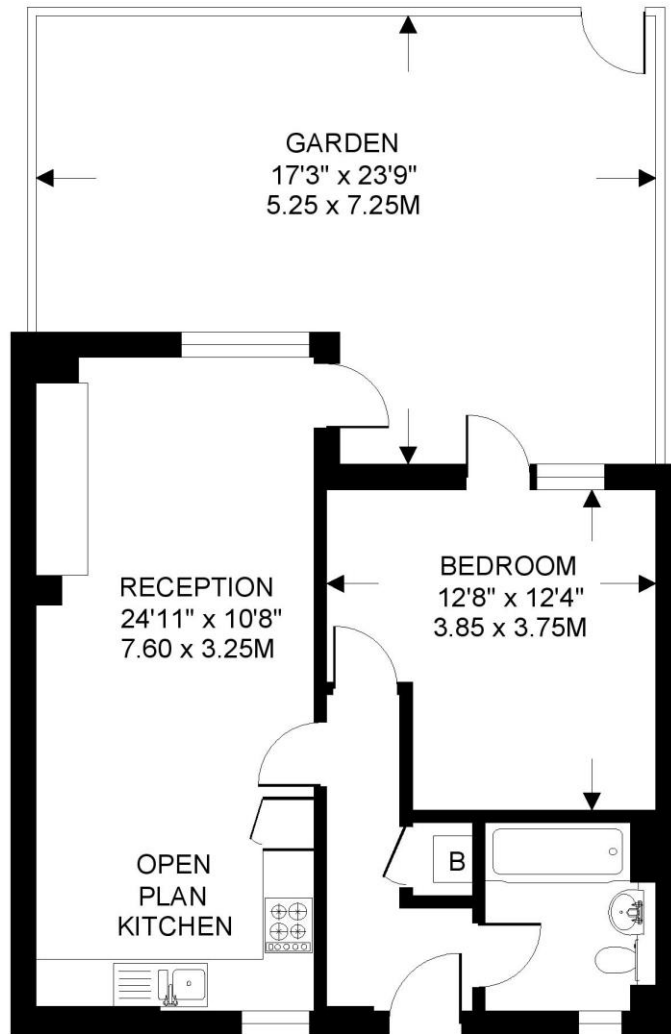
Kennington Station (Northern Line) is just 0.8 miles away, whilst Elephant & Castle Station (Bakerloo, Northern & Thameslink) is just 0.9 miles away. The area is also very well served with frequent bus services to the city and beyond.





ROFFO COURT SE17
1 BEDROOM FLAT

Approximate gross floor area
525 SQ.FT. / 48.7 SQ.M.



GROUND FLOOR

This floorplan is for illustration purposes only and is not to scale. The position and size of doors, windows, appliances and other features are approximate. Copyright: These plans should not be reproduced by any other person, without permission. Floorplan produced for Winkworth by Floorplanners 07801 228850

Kennington | 020 7587 0600 | kennington@winkworth.co.uk