



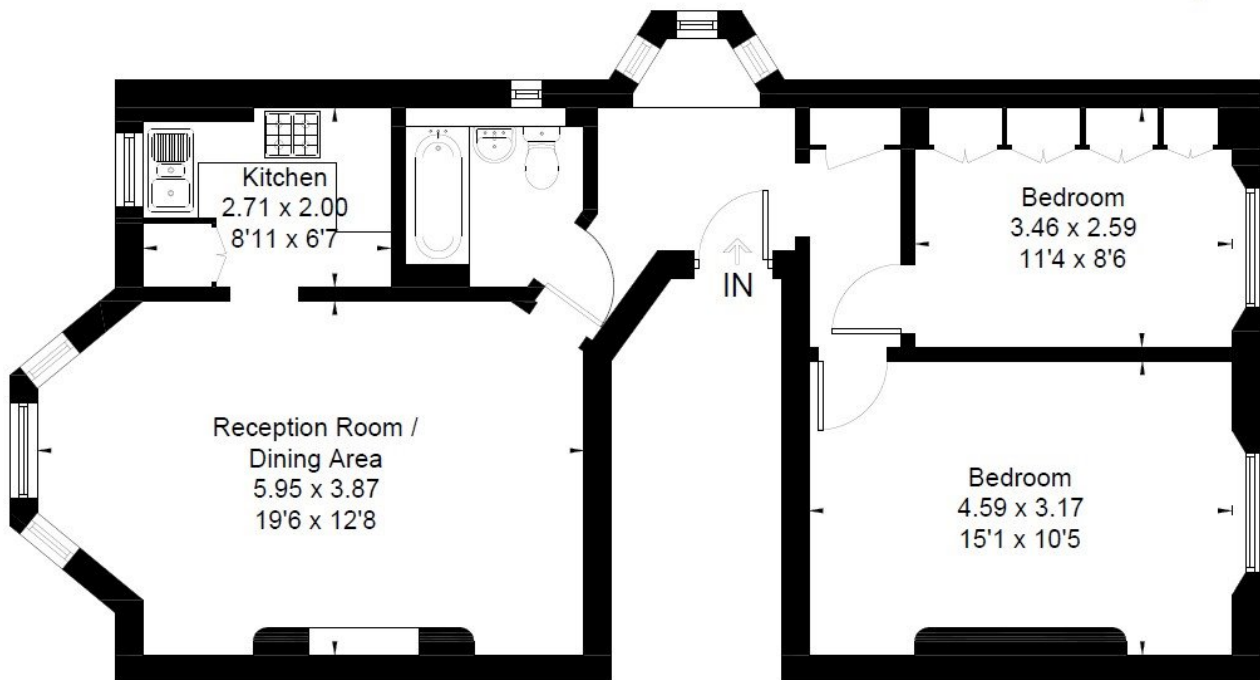
KIDBROOKE PARK ROAD, SE3
£1,900 PER MONTH FURNISHED

DESCRIPTION:

A bright and well-presented first-floor two bedroom flat in a beautiful period building on Kidbrooke Park Road. Offered furnished and available immediately, your earliest viewing is advised.

Blackheath | 0208 8520999 | blackheath@winkworth.co.uk

Approximate Area = 64.2 sq m / 691 sq ft
Including Limited Use Area (0.8 sq m / 9 sq ft)



First Floor

Surveyed and drawn in accordance with the International Property Measurement Standards (IPMS 2: Residential)
fourwalls-group.com 55208

This floorplan is for illustration purposes only and is not to scale. The position and size of doors, windows, appliances and other features are approximate.

Score	Energy rating	Current	Potential
92+	A		
81-91	B		
69-80	C		
55-68	D	65 D	78 C
39-54	E		
21-38	F		
1-20	G		

Deposit: £2,192.31

Holding Deposit:

Council Tax Band:

Where no figures are shown, we have been unable to ascertain the information.
All figures that are shown were correct at the time of printing.