



HEDGLEY MEWS, LEE, LONDON, SE12 8BB
GUIDE PRICE £450,000 FREEHOLD

LOCATED JUST 0.6 MILES FROM BLACKHEATH VILLAGE AND VERY CLOSE TO MANOR HOUSE GARDENS, IS THIS MODERN AND STYLISH TWO BEDROOM END OF TERRACE HOUSE WITH OFF STREET PARKING AND SET IN THIS SMALL GATED DEVELOPMENT. SOLD CHAIN FREE.

Blackheath | 0208 8520999 | blackheath@winkworth.co.uk

Winkworth



DESCRIPTION:

Arranged over two and a half levels, the accommodation comprises; entrance hall with cloakroom (WC) with steps down to a superb L-shaped reception room with a semi open plan kitchen, vaulted ceiling with skylights huge storage cupboards and access to a small terrace with further storage beyond. Upstairs is a master bedroom with feature corner window, second bedroom with skylight and window overlooking the vaulted kitchen, and a modern bathroom. The property is in very good decorative order with double glazed windows, gas fired central heating and under floor heating to the lower ground floor.

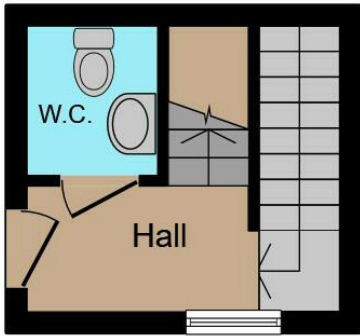
Further benefits include a green roof, allocated parking space, electronic gated access, communal BBQ area and is sold as Freehold and chain free.

This is a wonderful home and your immediate viewing is essential. Video tour can be seen at winkworth.co.uk

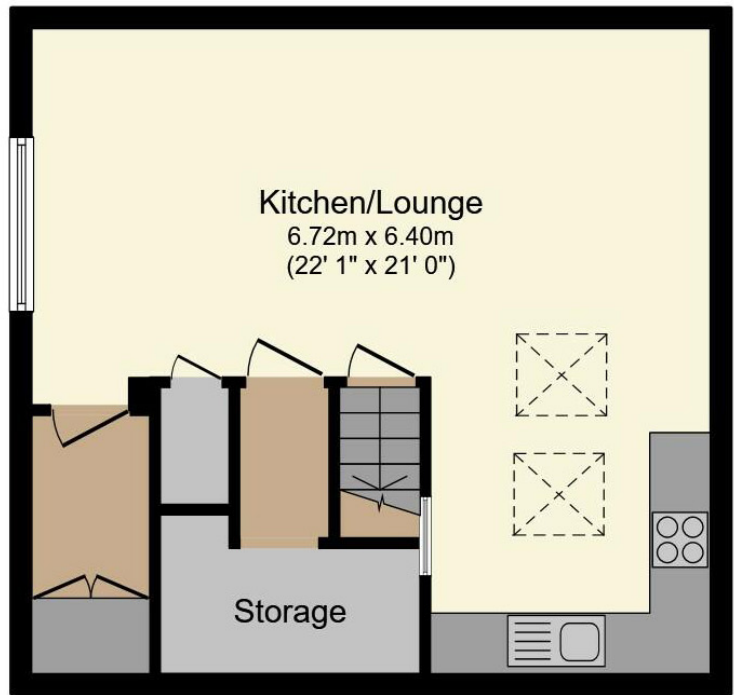
The property is located just 0.6 miles to Blackheath Village with its array of boutique shops, farmers market, restaurants, bars and station. The heath is 0.75 miles and the fabulous Royal Greenwich Park is 1.15 miles with Greenwich town centre beyond. Greenwich maintains a quaint rural village feel and is steeped in history from roman remains and ancient burial grounds, to the old Royal Naval hospital, the Royal Observatory, the National Maritime Museum, and the spectacularly restored Cutty Sark ' the last of the great tea clippers. Greenwich's covered market is one of London's best and attracts people from all over the capital. Surrounding the market, you'll find characterful boutiques and independent shops offering everything from toys and clothes to organic fruit and veg, artisan breads and cheeses.



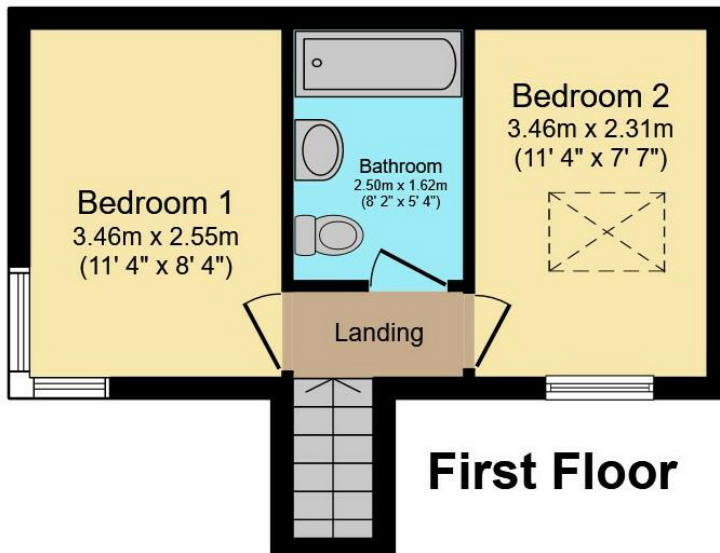




Ground Floor



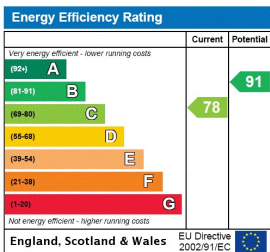
Lower Ground Floor



First Floor

Total floor area 76.3 m² (821 sq.ft.) approx

This floorplan is for illustration purposes only and is not to scale. The position and size of doors, windows, appliances and other features are approximate. Any lease and service charge details have been provided by the vendor. Any interest party should have these checked by a solicitor as part of the purchase process.



Blackheath | 0208 8520999 | blackheath@winkworth.co.uk



winkworth.co.uk

See things differently

Winkworth wishes to inform prospective buyers and tenants that these particulars are a guide and act as information only. All our details are given in good faith and believed to be correct at the time of printing but they don't form part of an offer or contract. No Winkworth employee has authority to make or give any representation or warranty in relation to this property. All fixtures and fittings, whether fitted or not are deemed removable by the vendor unless stated otherwise and room sizes are measured between internal wall surfaces, including furnishings.